

# CERTIFICATE OF LOCATION OF GOVERNMENT CORNER

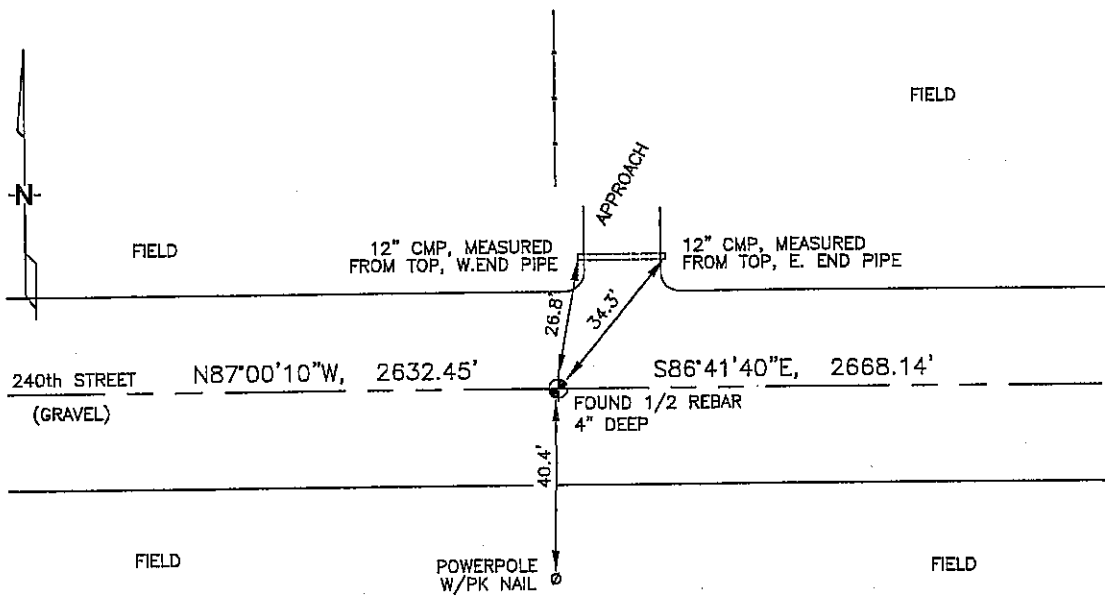
NORTH 1/4 Corner of Section 16, Township 102N Range 42W, 5TH P.M.

STATE OF MINNESOTA, County of NOBLES

At the corner location shown on the sketch :

- On 3/09/2006 found 1/2" REBAR, 4" DEEP, IN C.L OF GRAVEL  
ROAD, OPPOSITE FENCE LINE RUNNING NORTH.
- left monument as found,  lowered monument,  removed monument (explain)
- On \_\_\_\_\_ set \_\_\_\_\_

Sketch of reference ties



N: 569,145.47  
 E: 2,125,932.32  
 MN SOUTH, NAD 83

Statement of evidence relative to this corner location is on back page

I hereby certify that this document and the data contained herein was prepared by me or under my direct supervision.

Thomas J. Jeff 5/18/06  
 Thomas J. Jeff Date  
 Registration No. 44563

- Land Surveyor,  Professional Engineer  
 County Surveyor,  County Engineer

## OFFICE OF THE COUNTY RECORDER

County of \_\_\_\_\_

I hereby certify that this document was filed in the Co. Recorders office at \_\_\_\_\_ M. on the day of \_\_\_\_\_ A.D., 20

County Recorder \_\_\_\_\_  
 By \_\_\_\_\_, Deputy

DOCUMENT NO. \_\_\_\_\_

STATEMENT OF EVIDENCE:

NORTH 1/4 CORNER, SECTION 16, T. 102 N., R. 42 W.,  
NOBLES COUNTY, MINNESOTA

- 1868 Jewett & Howe, US. Deputy Surveyors, monumented corner.
- 3/09/2006 Ulteig Engineers, Inc., Survey Crew, Dennis Lavallie Party Chief, found a 1/2" rebar, 4" deep, in C/L of gravel road, opposite a fence line running north.  
Ties: NE-26.8' to PK nail in top, W. end of 12" C.M.P.;  
NE-34.3' to PK nail in top, E. end of 12" C.M.P.;  
S-40.4' to PKK nail in NW face of wood, power pole;  
E-2668.14' to NE corner, Section 16;  
W-2632.45' to NW corner, Section 16.