

CERTIFICATE OF LOCATION OF GOVERNMENT CORNER

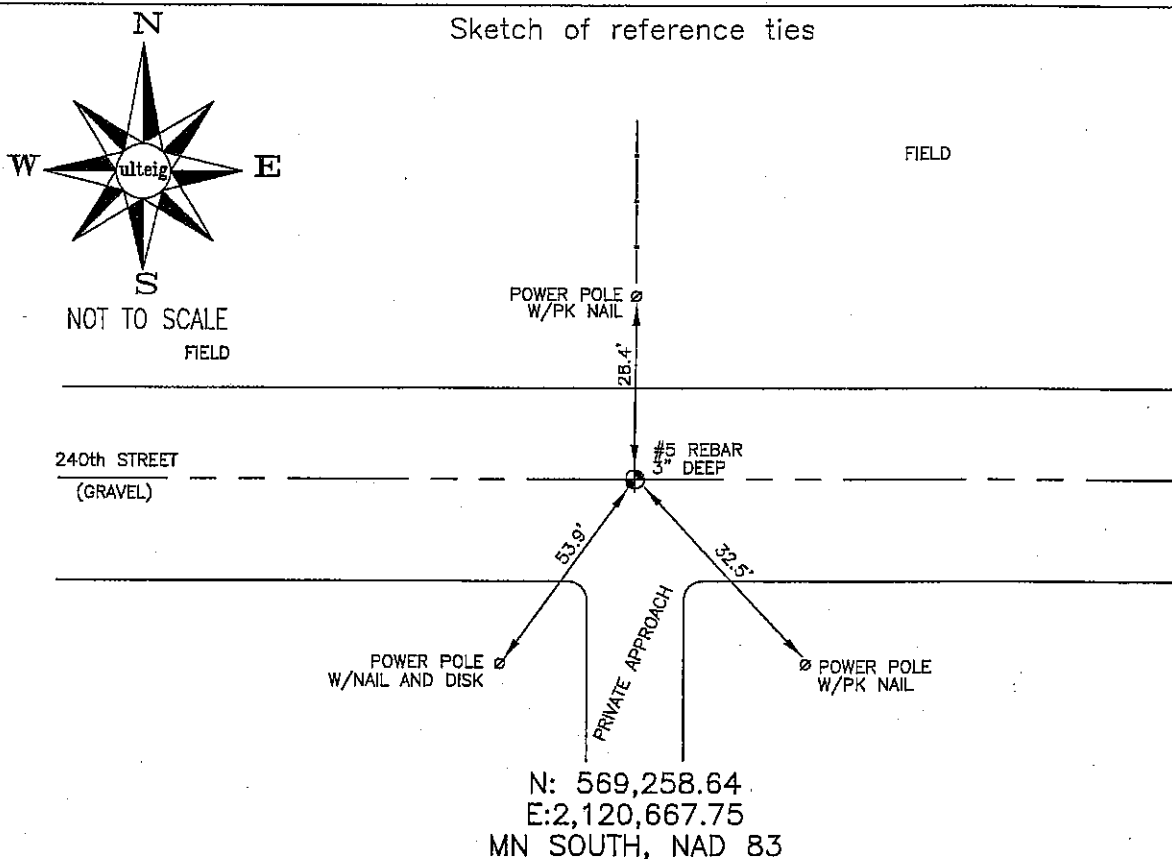
NORTH 1/4 Corner of Section 17, Township 102N, Range 42W, 5TH P.M.

STATE OF MINNESOTA, County of NOBLES

At the corner location shown on the sketch :

- On 3/09/2006 found 5/8" REBAR, 3" DEEP, IN GRAVEL ROAD,
OPPOSITE FENCE LINE RUNNING NORTH.
- left monument as found, lowered monument, removed monument (explain)
- On _____ set _____

Sketch of reference ties



Statement of evidence relative to this corner location is on back page

I hereby certify that this document and the data contained herein was prepared by me or under my direct supervision.

Thomas V. Zell 5/18/06
 Thomas V. Zell Date
 Registration No. 44563

- Land Surveyor, Professional Engineer
- County Surveyor, County Engineer

OFFICE OF THE COUNTY RECORDER

County of _____

I hereby certify that this document was filed in the Co. Recorders office at _____ M. on the day of _____ A.D. , 20

County Recorder _____

By _____, Deputy

DOCUMENT NO. _____

STATEMENT OF EVIDENCE:

NORTH 1/4 CORNER, SECTION 17, T. 102 N., R. 42 W.,
NOBLES COUNTY, MINNESOTA

- 1868 Jewett & Howe, US. Deputy Surveyors, monumented corner.
- 3/09/2006 Ulteig Engineers, Inc., Survey Crew, Dennis Lavallie Party Chief,
found a 5/8" rebar, 3" deep, in C/L of intersection of gravel roads,
opposite a fence line running north.
Ties: N-28.4' to PK nail in S face of wood, power pole;
SE-32.5' to PK nail in N face of wood, power pole;
SW-53.9' to nail & disc in NW face of wood, power pole;