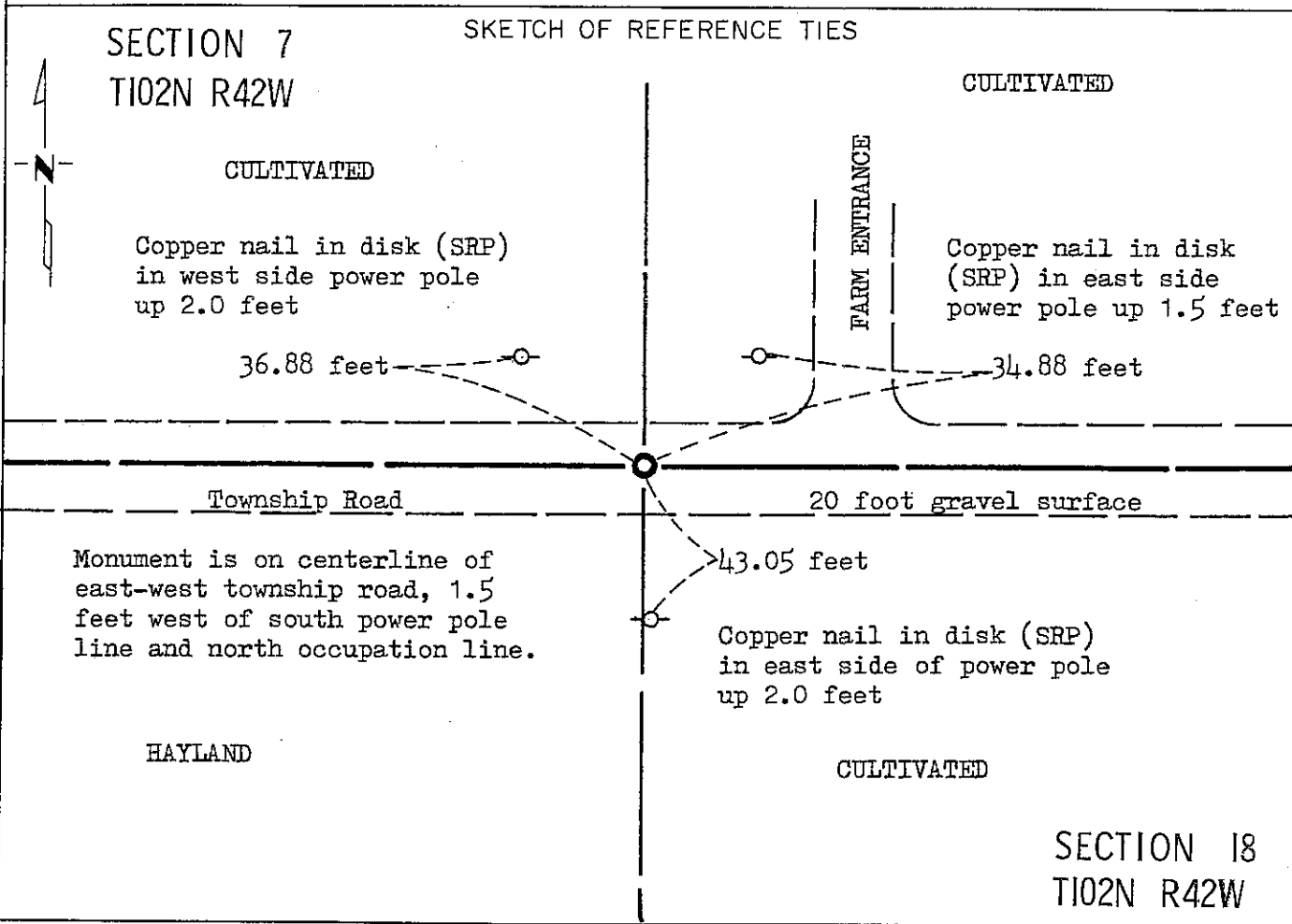


CERTIFICATE OF LOCATION OF GOVERNMENT CORNER

NORTH QUARTER Corner of Section 18, Township 102N, Range 42W, 5 P.M.
STATE OF MINNESOTA, County of NOBLES

At the corner location shown on the sketch:

- On June 22, 1988 found a 10 inch by 12 inch by 12 inch stone with no visible
DATE
markings down 3.8 feet below gravel surface.
 left monument as found, lowered monument, removed monument (explain)
- On June 24, 1988 placed a Minnesota Department of Transportation cast iron
DATE
monument down 0.4 feet.



Statement of evidence relative to this corner location is on back of page.

I hereby certify that this document and the data contained herein was prepared by me or under my direct supervision.

Allan E. Schorn 4-5-91
SIGNATURE DATE

Registration No. 11858

Land Surveyor, Professional Engineer

County Surveyor, County Engineer

OFFICE OF THE COUNTY RECORDER
County of Nobles

I hereby certify that this document was filed in the Co. Recorders office at 3:50 P. .M. on the 15th day of October A.D., 1991

County Recorder Jayne Howard
By _____, Deputy

DOCUMENT NO. 245756

Statement of Evidence: North Quarter Corner of Section 18 T102N R42W 5th P.M.

- Oct. 2, 1868 The original Public Land Survey was run in 1868 by Deputy Surveyors G. G. Howe and R. H. L. Jewett, and their notes read: "set post in mound with pits for $\frac{1}{4}$ sec. cor."
- 1896 & 1902 Nobles County Highway Department records show an iron pin in place at the corner.
- Sept. 25, 1911 William A. Saxon, Nobles County Surveyor, and W. C. Wyckoff, Nobles County Engineer, in a survey requested by J. P. Lynch, land owner, certified that the monument marking the corner is a stone with an "+" on top. Measurements were 1299.5 feet to the 1/16 corner stone to the east and 1332.5 feet to the 1/16 corner stone to the west. Saxon's notes also stated, "north $\frac{1}{4}$ corner stone is 47 feet south of the old original corner."
- June 22, 1989 Minnesota Department of Transportation survey crew members O. Berkness, W. Hartman, and R. Maras using a backhoe found a $\frac{1}{2}$ inch by 15 inch iron pipe directly over a 10 inch by 12 inch by 12 inch stone 3.8 feet below the gravel surface. They removed the $\frac{1}{2}$ inch iron pipe and placed a Minnesota Department of Transportation cast iron monument directly over the stone.
- The in place location of the stone is compatible with the occupation lines within the section. An analysis of the Statement of Evidence and the field measurements indicates that the stone is in a reasonable location for the corner.
- For additional information, including field measurements and photographs, contact the Minnesota Department of Transportation in Windom, Minnesota.

Act AK Compared _____
 Date 11/11
 Fee 20 11