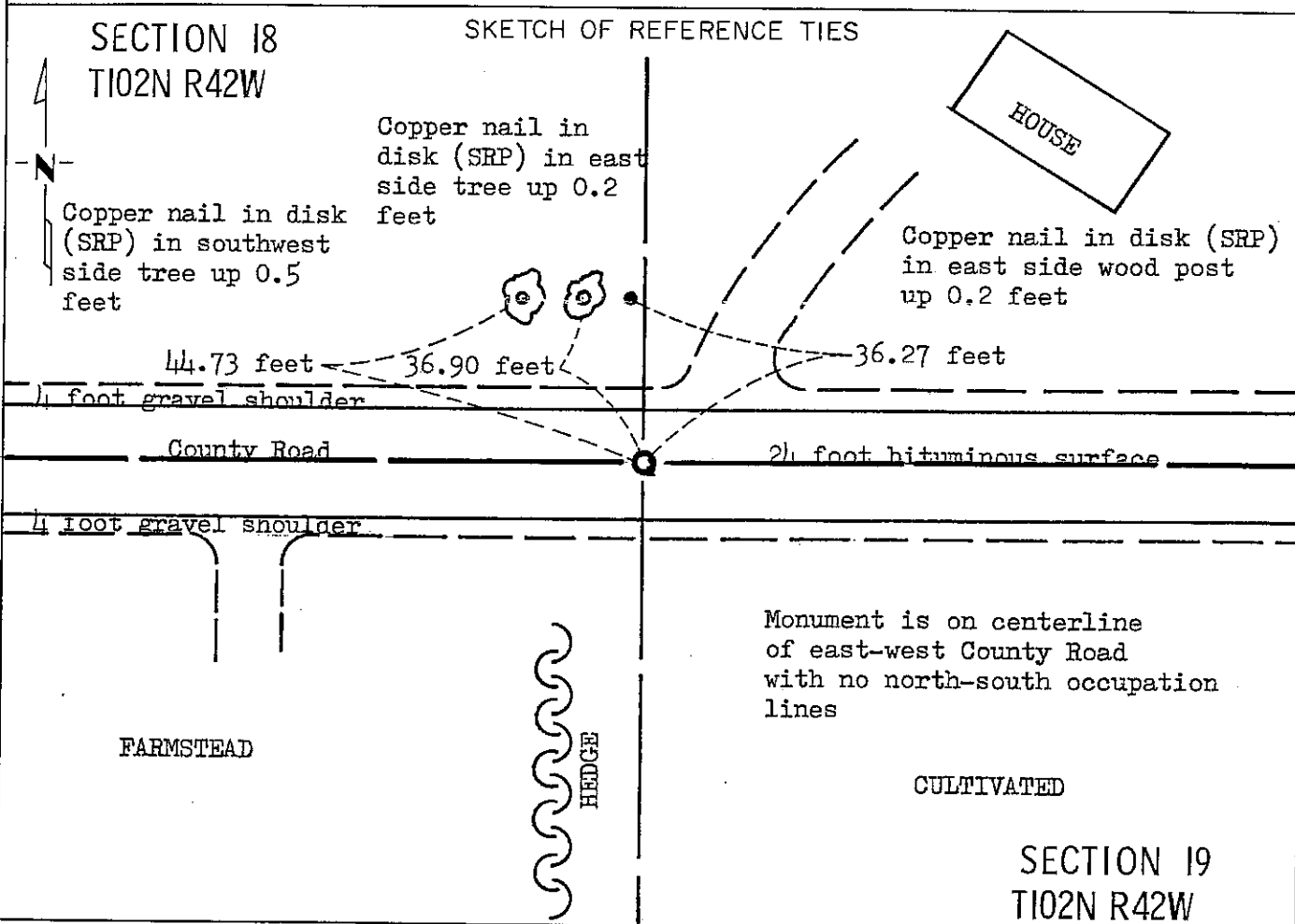


# CERTIFICATE OF LOCATION OF GOVERNMENT CORNER

NORTH QUARTER Corner of Section 19, Township 102N, Range 42W, 5 P.M.  
STATE OF MINNESOTA, County of NOBLES

At the corner location shown on the sketch:

- On May 28, 1988 found & nothing  
DATE
- left monument as found,  lowered monument,  removed monument (explain)
- On Aug. 3, 1988 placed a Minnesota Department of Transportation cast iron  
DATE monument flush



Statement of evidence relative to this corner location is on back of page.

I hereby certify that this document and the data contained herein was prepared by me or under my direct supervision.

Allan E. Schorn 4-5-91  
SIGNATURE DATE

Registration No. 11858

- Land Surveyor,  Professional Engineer
- County Surveyor,  County Engineer

OFFICE OF THE COUNTY RECORDER  
County of Nobles

I hereby certify that this document was filed in the Co. Recorders office at 4:15 P. .M. on the 15th day of October A.D., 19 91

County Recorder James Howard

By \_\_\_\_\_, Deputy

DOCUMENT NO. 245761

Statement of Evidence: North Quarter Corner of Section 19 T102N R42W 5th P.M.

- Oct., 1868 The original Public Land Survey was run in 1868 by Deputy Surveyor G. G. Howe, and his notes state: "set post in mound with pits for  $\frac{1}{4}$  sec. cor."
- 1891, 1896, 1902 Nobles County Highway records show a stone placed in 1891. The stone was recovered in 1896, 1902 and in 1912.
- Sept. 25, 1911 Nobles County Surveyor, W. A. Saxon, certifies on a plat of a survey requested by Joseph P. Lynch that a stone is in place at the south  $\frac{1}{4}$  of Section 18. Measurements were 2653.0 feet from the section corner to the east and 2401.5 feet to the range line west.
- Aug. 26, 1912 Nobles County Surveyor, W. A. Saxon, at the request of the County Commissioners, surveyed a line west thru the township. The plat shows the south quarter corner of Section 18 to be a stone. No measurements were shown on the plat.
- Feb. 16, 1978 A Minnesota Department of Transportation survey crew checked the area at the intersection of County State Aid Highway 28 and a north-south fence line, and found no evidence as to the location of the corner.
- May 28, 1988 Minnesota Department of Transportation survey crew members O. Berkness, V. Lien, D. Ernst and W. Hartman, using a tractor mounted backhoe, excavated at the occupation lines for the corner. A trench 8 feet north-south by 12 feet east-west and to a depth of 4.5 feet was dug and no evidence of a corner stone or other monument was found.
- Aug. 3, 1988 O. Berkness, Senior Highway Technician for the Minnesota Department of Transportation, re-established this corner by projecting a line along the north line of Section 19 from the Northeast Corner of Section 19 westerly through the northeast corner of the northwest quarter of the northeast quarter of said Section 19. The distance from the northeast corner of Section 19 to the 1/16 corner was 1325.882 feet on an azimuth of  $269^{\circ} 57' 25.99''$ . The line was then projected on the same azimuth for a distance of 1325.882 feet to set the North Quarter Section 19-102-42. A Minnesota Department of Transportation cast iron monument was placed to mark the corner.

For additional information, including field measurements and photographs, contact the Minnesota Department of Transportation in Windom, Minnesota.