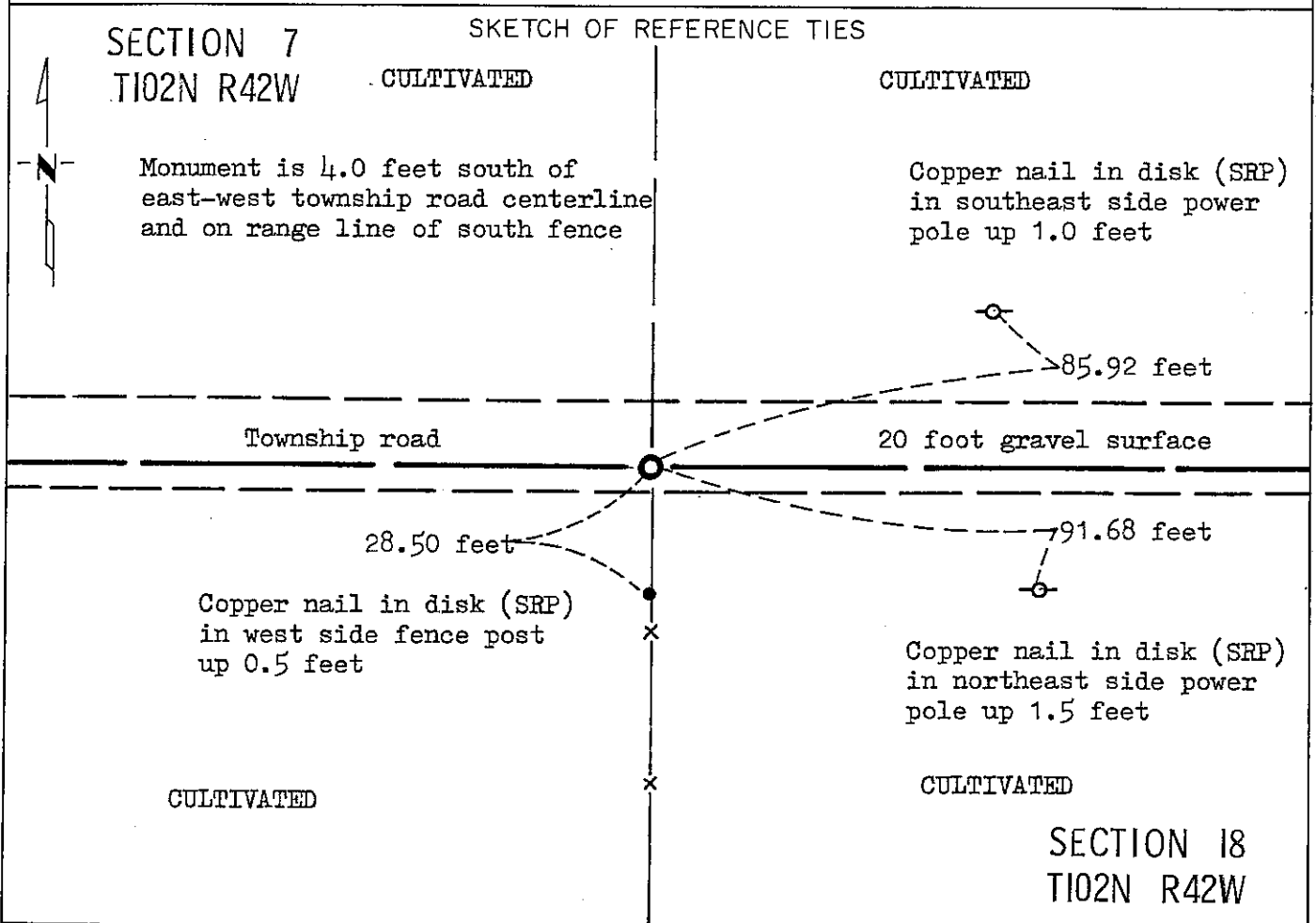


# CERTIFICATE OF LOCATION OF GOVERNMENT CORNER

NORTH SIXTEENTH of Corner of Section 18, Township 102N, Range 42W, 5 P.M.  
NORTHEAST QUARTER  
STATE OF MINNESOTA, County of NOBLES

At the corner location shown on the sketch:

- On June 22, 1988 found a 11 inch by 12 inch by 13 inch stone with no visible  
DATE markings down 2.4 feet  
 left monument as found,  lowered monument,  removed monument (explain)
- On June 24, 1988 placed a Minnesota Department of Transportation cast iron  
DATE monument down 0.5 feet



Statement of evidence relative to this corner location is on back of page.

I hereby certify that this document and the data contained herein was prepared by me or under my direct supervision.

Allan E. Schom 4-5-91  
SIGNATURE DATE

Registration No. \_\_\_\_\_  
 Land Surveyor,  Professional Engineer  
 County Surveyor,  County Engineer

OFFICE OF THE COUNTY RECORDER  
County of Nobles

I hereby certify that this document was filed in the Co. Recorders office at 3:55 P. .M. on the 15th day of October A.D., 1991

County Recorder James Howard  
By \_\_\_\_\_, Deputy  
DOCUMENT NO. 245757

Statement of Evidence: Northeast Corner of the Northwest Quarter of the Northeast Quarter Corner of Section 18 T102N R42W 5th P.M.

Sept. 25, 1911

William A. Saxon, Nobles County Surveyor, survey plat indicates that a stone is at the corner marked with an "+" on top. Measurement to the north quarter corner of Section 18 is 1299.5 feet and 1318.5 feet to the northeast corner of Section 18, township 102N, range 42W. He does not indicate if he set or found the stone.

June 22, 1988

Minnesota Department of Transportation survey crew members O. Berkness, W. Hartman, and R. Maras using a tractor mounted backhoe, excavated and found an 11 inch by 12 inch by 13 inch stone (no "+") down 2.4 feet. They left the stone as it was found and placed a Minnesota Department of Transportation cast iron monument directly above the center of the stone.

The in-place location of the stone is compatible with the occupation lines within the section. An analysis of the Statement of Evidence and the field measurements indicate that the stone is in a reasonable location for the corner.

For additional information, including field measurements and photographs, contact the Minnesota Department of Transportation in Windom, Minnesota.

Fact *Handwritten* Computer  
oto *Handwritten*  
Feb *Handwritten*