

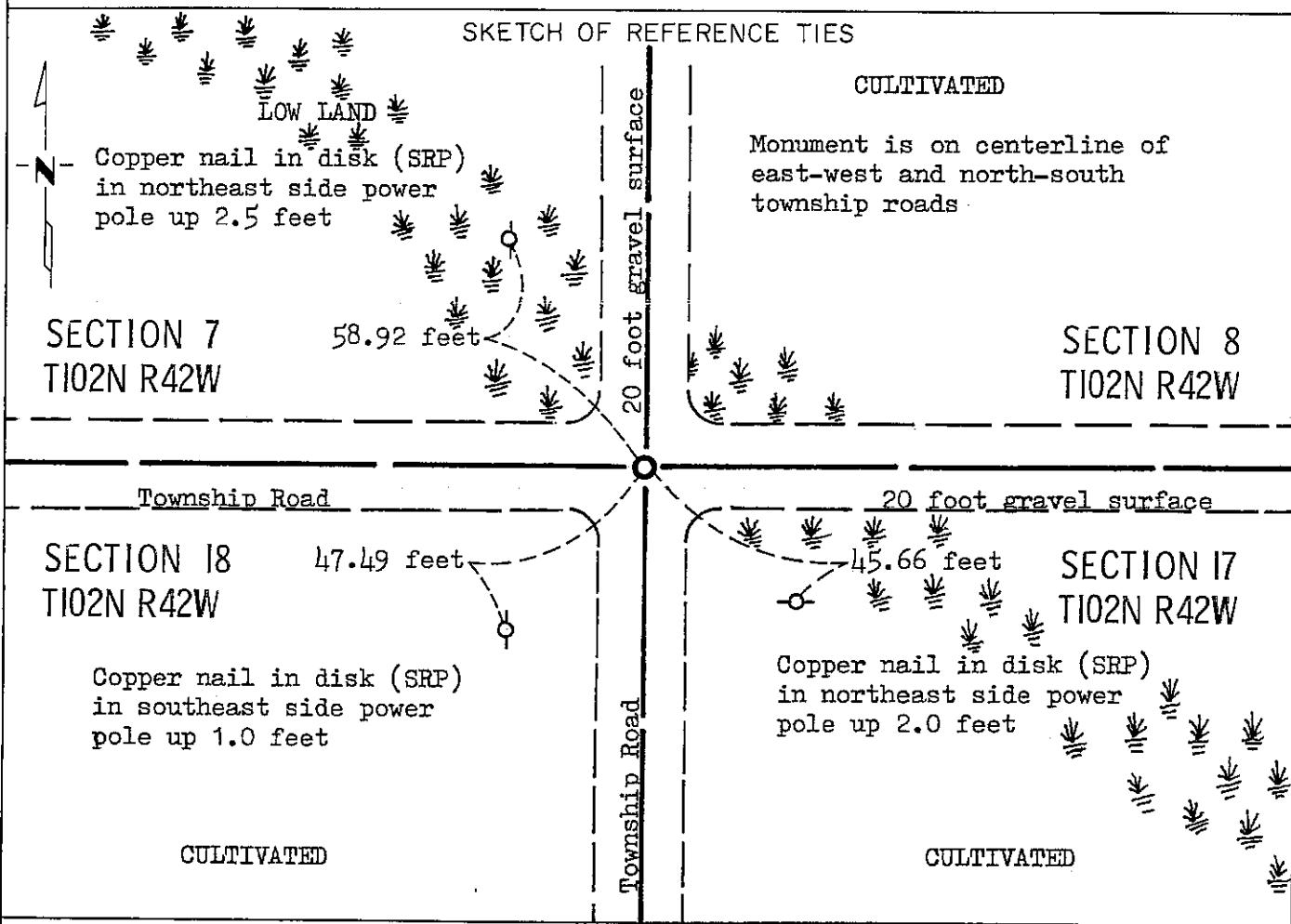
CERTIFICATE OF LOCATION OF GOVERNMENT CORNER

NORTHEAST Corner of Section 18, Township 102N, Range 42W, 5 P.M.

STATE OF MINNESOTA, County of NOBLES

At the corner location shown on the sketch:

- On June 22, 1988 found a 3/4 inch by 15 inch iron pin down 0.5 feet, 9 inch by 10 inch by 6 inch stone down 2.5 feet, (See statement of evidence) left monument as found, lowered monument, removed monument (explain)
- On June 22, 1988 placed a Minnesota Department of Transportation cast iron monument down 0.5 feet, directly over the two stones.



Statement of evidence relative to this corner location is on back of page.

I hereby certify that this document and the data contained herein was prepared by me or under my direct supervision.

Allen E. Schorn 4-5-91
SIGNATURE DATE

Registration No. 11858

- Land Surveyor, Professional Engineer
- County Surveyor, County Engineer

OFFICE OF THE COUNTY RECORDER
County of Nobles

I hereby certify that this document was filed in the Co. Recorders office at 4:05 P. M. on the 15th day of October A.D., 1991

County Recorder James Howard
By _____, Deputy

DOCUMENT NO. 245759

Statement of Evidence: Northeast Corner of Section 18 T102N R42W 5th P.M.

- Oct. 2, 1868 The original Public Land Survey was run in 1868 by Deputy Surveyor R. H. L. Jewett, and his notes read: "set post in mound with pits for cor. to secs. 7, 8, 17 & 18".
- Sept. 21-25, 1911 William A. Saxon, Nobles County Surveyor, did a survey of Section 18-102-42 at the request of Joseph P. Lynch, land owner. Saxon certified on a plat of the survey that the monument marking the northeast corner of Section 18 is a stone with an "+" on top. Measurements to the west were 1318.5 feet to a sixteenth corner, 2618.0 feet to the north quarter corner of Section 18, and 5004.0 feet to the range line to the west.
- 1937 & 1959 Nobles County Highway Department records show a stone in 1937 and in 1959 they found a stone and placed an iron pin.
- Feb. 14, 1978 A Minnesota Department of Transportation survey crew found ties as noted and obtained a reading with a magnetic locator near the intersection of the north-south and east-west township roads. They dug a hole 0.7 foot deep and 0.5 foot in diameter, the magnetic locator indicated the object was much deeper so the search was abandoned because of difficult digging conditions.
- June 22, 1988 Minnesota Department of Transportation survey crew members O. Berkness, W. Hartman and R. Maras using a tractor mounted backhoe, found a 3/4 inch by 15 inch iron pin down 0.5 foot. Below the iron pin at a depth of 2.5 feet they found a 9 inch by 10 inch by 6 inch stone which was directly over a 10 inch by 14 inch by 14 inch stone. No visible markings were on the stones. A Minnesota Department of Transportation cast iron monument was placed directly over the center of the stones to mark the corner. The 3/4 inch iron pin was removed.
- The inplace location of the stones is compatible with the occupation lines within the section. An analysis of the Statement of Evidence and the field measurements indicate that the stones are in a reasonable location for the corner.
- For additional information, including field measurements and photographs, contact the Minnesota Department of Transportation in Windom, Minnesota.

Tract 18-102-42 Compared _____
 Photo 18-102-42 _____
 Fee 18-102-42 _____