

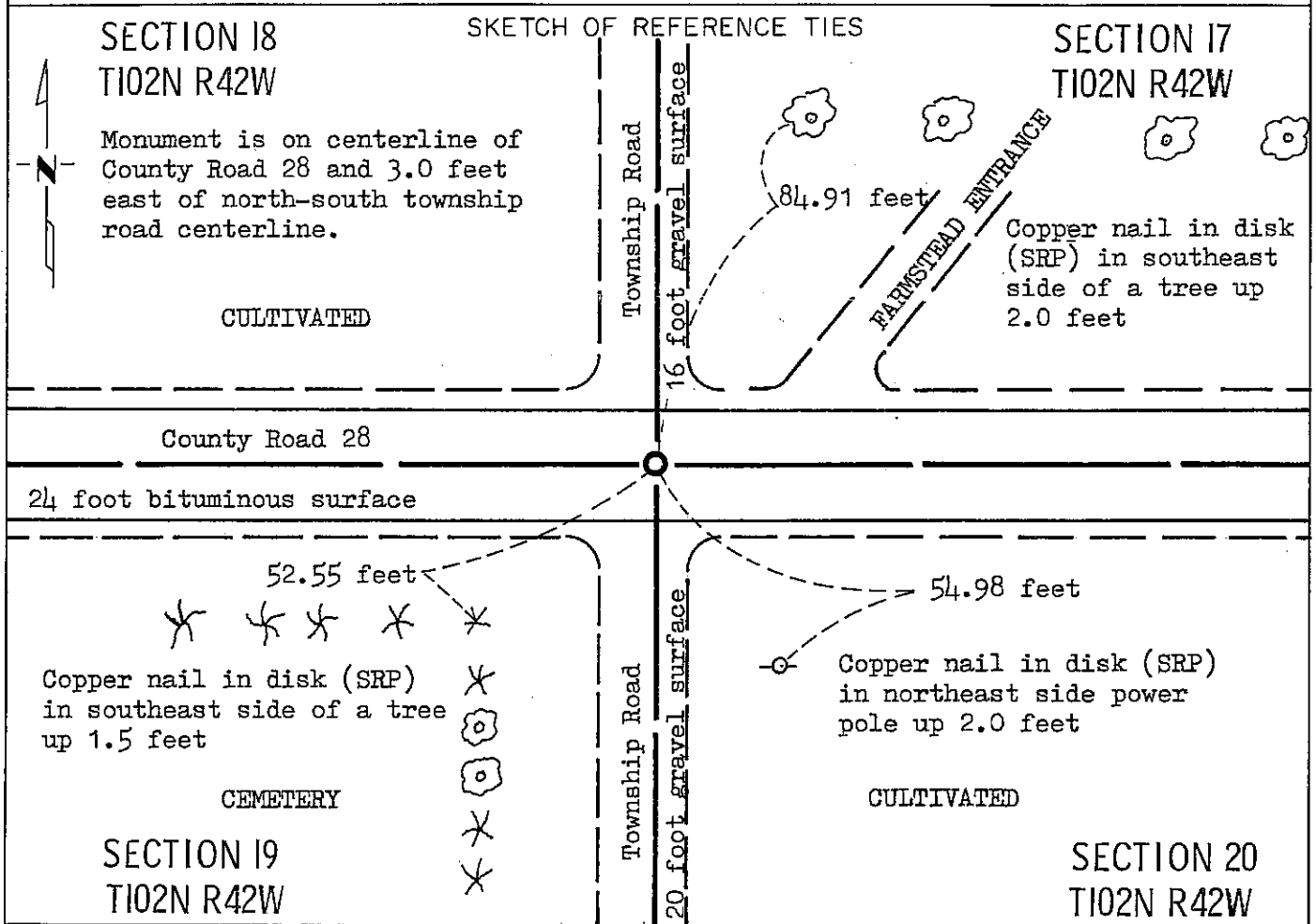
CERTIFICATE OF LOCATION OF GOVERNMENT CORNER

NORTHEAST Corner of Section 19, Township 102N, Range 42W, 5 P.M.

STATE OF MINNESOTA, County of NOBLES

At the corner location shown on the sketch:

- On June 23, 1988 found a 2 inch by 2 inch by 18 inch wood stake down 1.7 feet,
DATE
9 inch by 7 inch by 5 inch stone down 3.3 feet, (See Statement of Evidence)
 - left monument as found, lowered monument, removed monument (explain)
- On Aug. 3, 1988 placed a Minnesota Department of Transportation cast iron
DATE
monument 0.1 feet below the bituminous surface



Statement of evidence relative to this corner location is on back of page.

I hereby certify that this document and the data contained herein was prepared by me or under my direct supervision.

Allan E. Schorn 4-5-91
SIGNATURE DATE

Registration No. 11858

- Land Surveyor, Professional Engineer
- County Surveyor, County Engineer

OFFICE OF THE COUNTY RECORDER

County of Nobles

I hereby certify that this document was filed in the Co. Recorders office at 4:20 P. M. on the 15th day of October A.D., 19 91

County Recorder James Howard

By _____, Deputy

DOCUMENT NO. 245762

Statement of Evidence: Northeast Corner of Section 19 T102N R42W 5th P.M.

- Oct. 2, 1868 The original Public Land Survey was run in 1868 by Deputy Surveyor R. H. L. Jewett, and his notes state: "set post in mound with pits for cor. to secs. 17, 18, 19 & 20".
- 1902 Nobles County Highway records show a stone at the corner in 1902.
- Sept. 25, 1911 William A. Saxon, Nobles County Surveyor, did a resurvey of Section 18-102-42 and on the plat certifies that there is a stone with a "+" as a monument at the southeast corner of Section 18. Measurements were 1326.5 feet to a sixteenth corner west, 2653.0 feet to the quarter corner between sections 18 and 19 and 5054.5 feet to the section corner on the range line to the west.
- Aug. 26, 1912 William A. Saxon, Nobles County Surveyor, at the request of the County Commissioners surveyed a line west through the township. His plat shows a stone at the southeast corner of Section 18. It was 2683 feet from an iron post at the quarter corner to the east.
- 1932 Minnesota Highway Department Right-of-Way records show a corner 1475.0 feet south of Trunk Highway 16 Station 1552+08.0.
- 1937 & 1966 Nobles County Highway Records show a stone in 1937 and a stone in 1966 when a wood stake was placed.
- February 16, 1978 Minnesota Department of Transportation survey crew members Foster, Verdoorn, and Warner using a magnetic locator, obtained a reading near the centerline of the north-south township road and approximately 12.5 feet south of the centerline of County State Aid Highway 28 indicating an iron object. They did not dig into the bituminous surface. No other evidence was located at that time.
- June 23, 1988 Minnesota Department of Transportation survey crew members O. Berkness, W. Hartman, and R. Maras using a tractor mounted backhoe, excavated a trench at the intersection of the north-south and east-west roads. At a depth of 1.7 feet they found a 2 inch by 2 inch by 18 inch wood stake over a 9 inch by 7 inch by 5 inch stone which was down 3.3 feet and directly over a 6 inch by 6 inch by 17 inch stone down 3.7 feet. No visible markings were found on either stone. The center of the lower stone was used as the location of the corner and a Minnesota Department of Transportation cast iron monument was placed directly over the stone and 0.1 feet below the bituminous surface.

The inplace location of the stone is compatible with the occupation lines within the section. An analysis of the Statement of Evidence and field measurements indicate that the stone is in a reasonable location for the corner.

For additional information, including field measurements and photographs, contact the Minnesota Department of Transportation in Windom, Minnesota.

Tract 102N R42W 5th P.M. Compared _____
 Photo _____
 Fee _____