

CERTIFICATE OF LOCATION OF GOVERNMENT CORNER

NORTHEAST Corner of Section 17, Township 102N, Range 42W 5TH P.M.

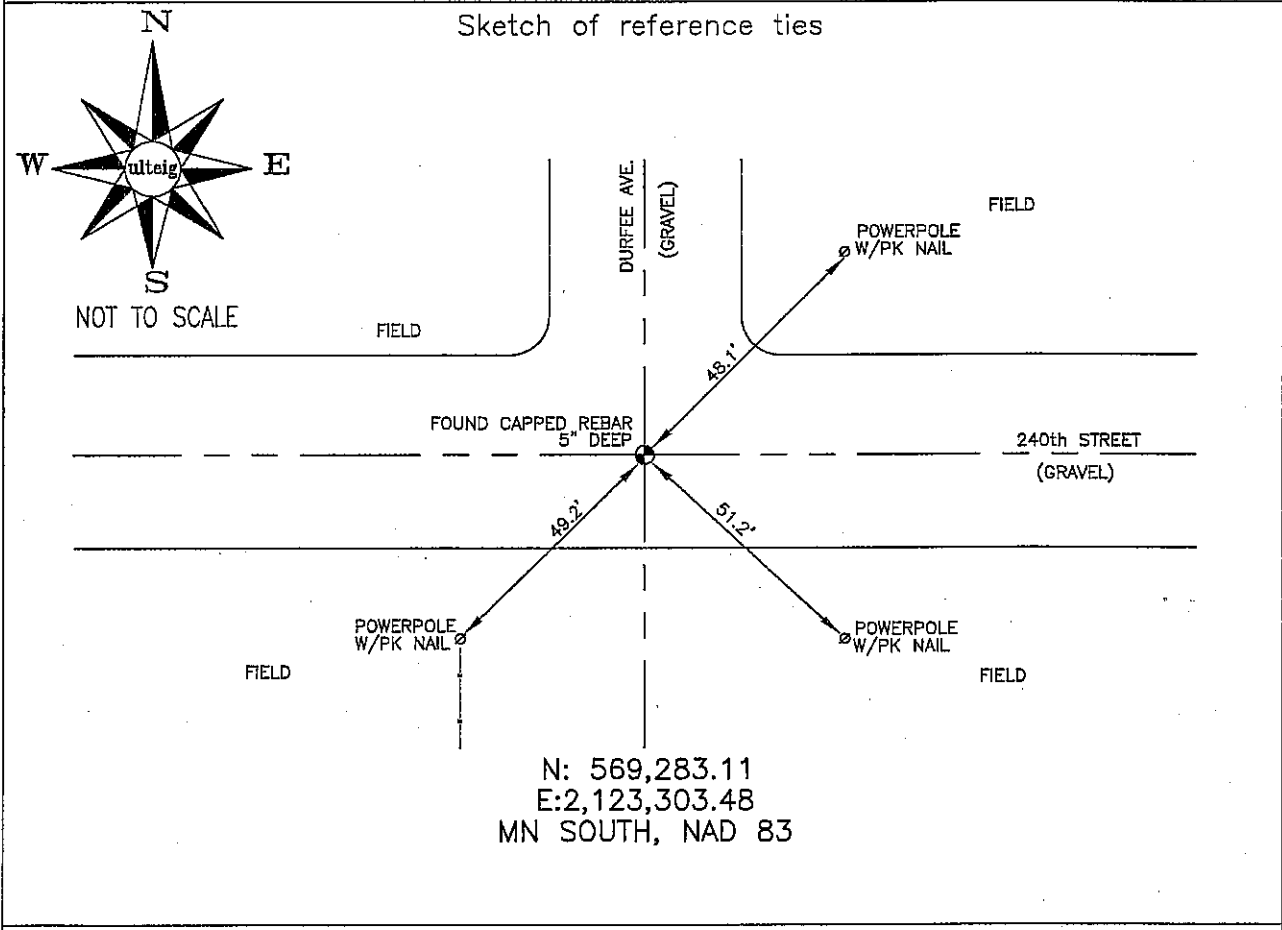
STATE OF MINNESOTA, County of NOBLES

At the corner location shown on the sketch :

On 3/09/2006 found A REBAR WITH AN UNREADABLE CAP, 5" DEEP,
AT INTERSECTION OF GRAVEL ROADS.

left monument as found, lowered monument, removed monument (explain)

On _____ set _____



Statement of evidence relative to this corner location is on back page

I hereby certify that this document and the data contained herein was prepared by me or under my direct supervision.

Thomas V. Zeff
 Thomas V. Zeff
 Registration No. 44563
 Land Surveyor, Professional Engineer
 County Surveyor, County Engineer

OFFICE OF THE COUNTY RECORDER

County of _____

I hereby certify that this document was filed in the Co. Recorders office at _____ M. on the day of _____ A.D. , 20

County Recorder _____
 By _____, Deputy

DOCUMENT NO. _____

5/18/06
Date

STATEMENT OF EVIDENCE:

NORTHEAST CORNER, SECTION 17, T. 102 N., R. 42 W.,
NOBLES COUNTY, MINNESOTA

- 1868 Jewett & Howe, US. Deputy Surveyors, monumented corner.
- 3/09/2006 Ulteig Engineers, Inc., Survey Crew, Dennis Lavallie Party Chief,
found a rebar with an unreadable cap, at the C/L intersection, of
gravel roads.
Ties: NE-48.1' to PK nail in SW face of wood, power pole;
SE-51.2' to PK nail in NE face of wood, power pole;
SW-49.2' to PK nail in W face of wood, power pole.