

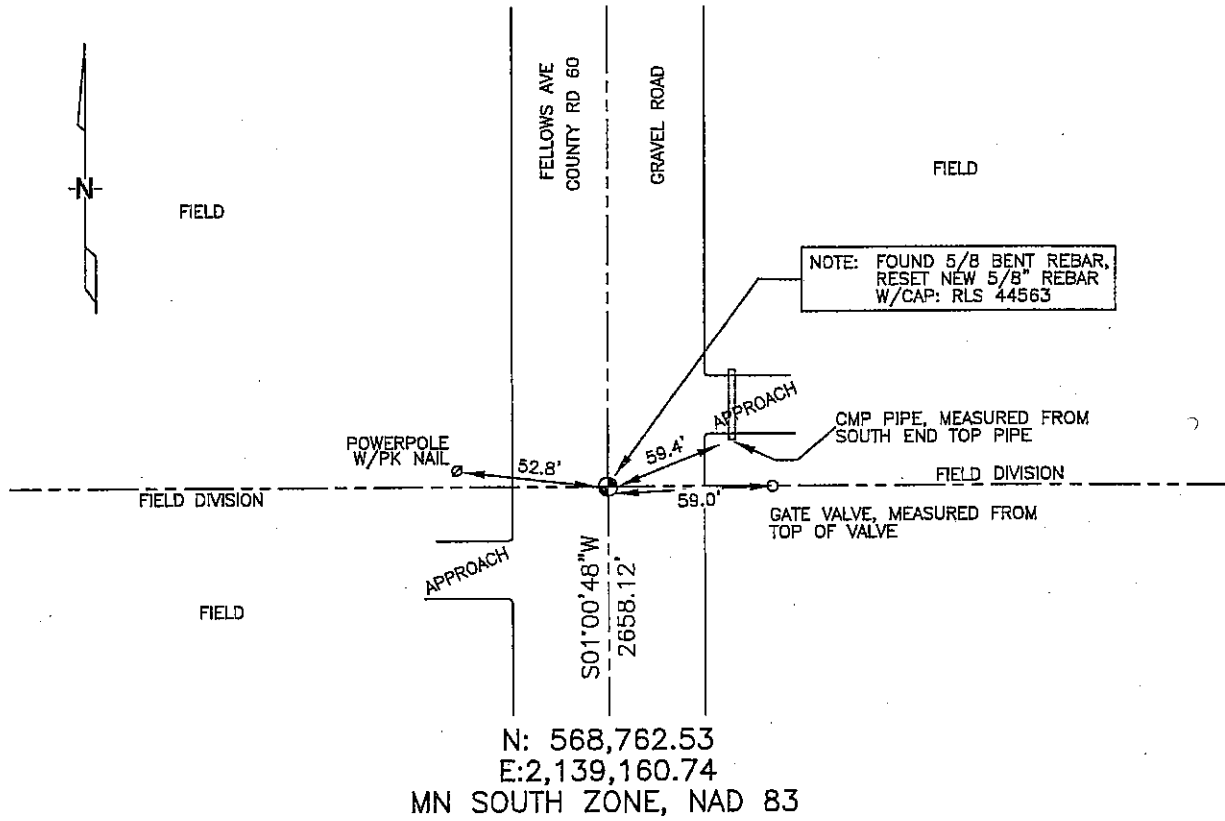
CERTIFICATE OF LOCATION OF GOVERNMENT CORNER

NORTHWEST Corner of Section 13, Township 102N, Range 42W, 5th P.M.
 STATE OF MINNESOTA, County of NOBLES

At the corner location shown on the sketch:

- On 3/08/2006 found a BENT REBAR IN GRAVEL ROAD, OPPOSITE FIELD
DATE DIVISIONS.
- left monument as found, lowered monument, removed monument (explain)
- On 3/08/2006 placed a 5/8" REBAR WITH CAP: RLS 44563.
DATE

SKETCH OF REFERENCE TIES



N: 568,762.53
 E: 2,139,160.74
 MN SOUTH ZONE, NAD 83

Statement of evidence relative to this corner location is on back of page.

I hereby certify that this document and the data contained herein was prepared by me or under my direct supervision.

Thomas V. Zeff 5/23/06
 Thomas V. Zeff DATE

Registration No. 44563

- Land Surveyor, Professional Engineer
- County Surveyor, County Engineer

OFFICE OF THE COUNTY RECORDER

County of _____

I hereby certify that this document was filed in the Co. Recorders office at _____ .M. on the _____ day of _____ A.D., 20____

County Recorder _____

By _____, Deputy

DOCUMENT NO. _____

STATEMENT OF EVIDENCE:

NORTHWEST CORNER, SECTION 13, T. 102 N., R. 42 W.,
NOBLES COUNTY, MINNESOTA

- 1868 JEWETT & HOWE, US. Deputy Surveyors, monumented corner.
- 3/08/2006 Ulteig Engineers, Inc., Survey Crew, Dennis Lavallie Party Chief,
found nothing. Set a 5/8" capped rebar, 8" down.
Ties: NW-52.8' to pk nail in wood power pole south side, up 12"
NE-59.4' to punch in South end cmp, top of cmp
E-59.0' to Gate Valve
S-2658.12' to West 1/4 corner, Section 13.