

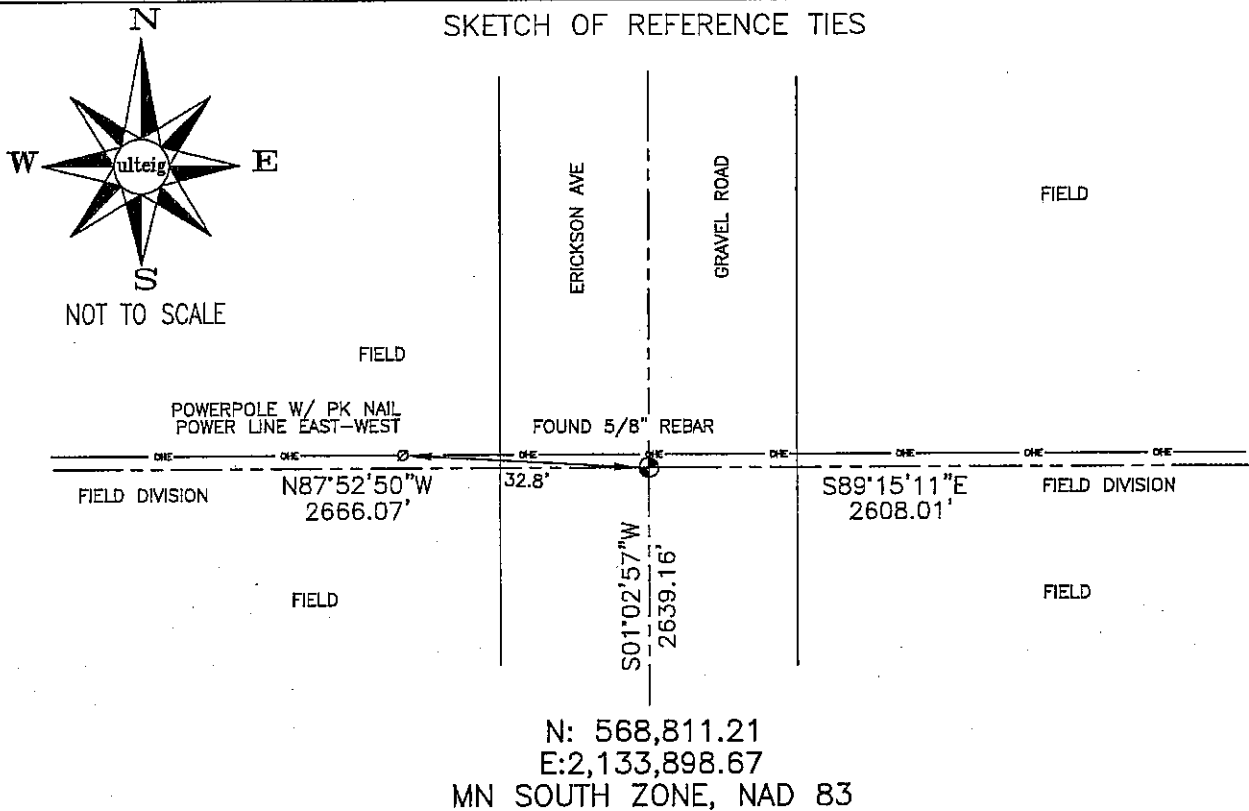
CERTIFICATE OF LOCATION OF GOVERNMENT CORNER

NORTHWEST Corner of Section 14, Township 102N, Range 42W, 5th P.M.
 STATE OF MINNESOTA, County of NOBLES

At the corner location shown on the sketch:

- On 3/08/2006 found a 5/8" REBAR, 2" DEEP, IN C/L OF GRAVEL ROAD.
DATE
- left monument as found, lowered monument, removed monument (explain)
- On _____ placed a _____
DATE

SKETCH OF REFERENCE TIES



Statement of evidence relative to this corner location is on back of page.

I hereby certify that this document and the data contained herein was prepared by me or under my direct supervision.

Thomas V. Zell
 Thomas V. Zell
5/24/06
 DATE

Registration No. 44563

- Land Surveyor, Professional Engineer
- County Surveyor, County Engineer

OFFICE OF THE COUNTY RECORDER

County of _____

I hereby certify that this document was filed in the Co. Recorders office at _____ .M. on the _____ day of _____ A.D., 20_____

County Recorder _____

By _____, Deputy

DOCUMENT NO. _____

STATEMENT OF EVIDENCE:

NORTHWEST CORNER, SECTION 14, T. 102 N., R. 42 W.,
NOBLES COUNTY, MINNESOTA

- 1868 JEWETT & HOWE, US. Deputy Surveyors, monumented corner.
- 3/08/2006 Ulteig Engineers, Inc., Survey Crew, Dennis Lavallie Party Chief,
found a 5/8" rebar, 2" down, in the C/L of a gravel road,
opposite crop divisions in the fields.
Ties: NW-32.8' to pk nail in wood power pole, up 30", east side
E-2608.01' to North 1/4 cor, Sec 14,
S-2639.16' to West 1/4 cor, Sec 14,
W-2666.07' to North 1/4 cor, Sec15.