

CERTIFICATE OF LOCATION OF GOVERNMENT CORNER

NORTHWEST Corner of Section 15, Township 102N, Range 42W, 5th P.M.

STATE OF MINNESOTA, County of NOBLES

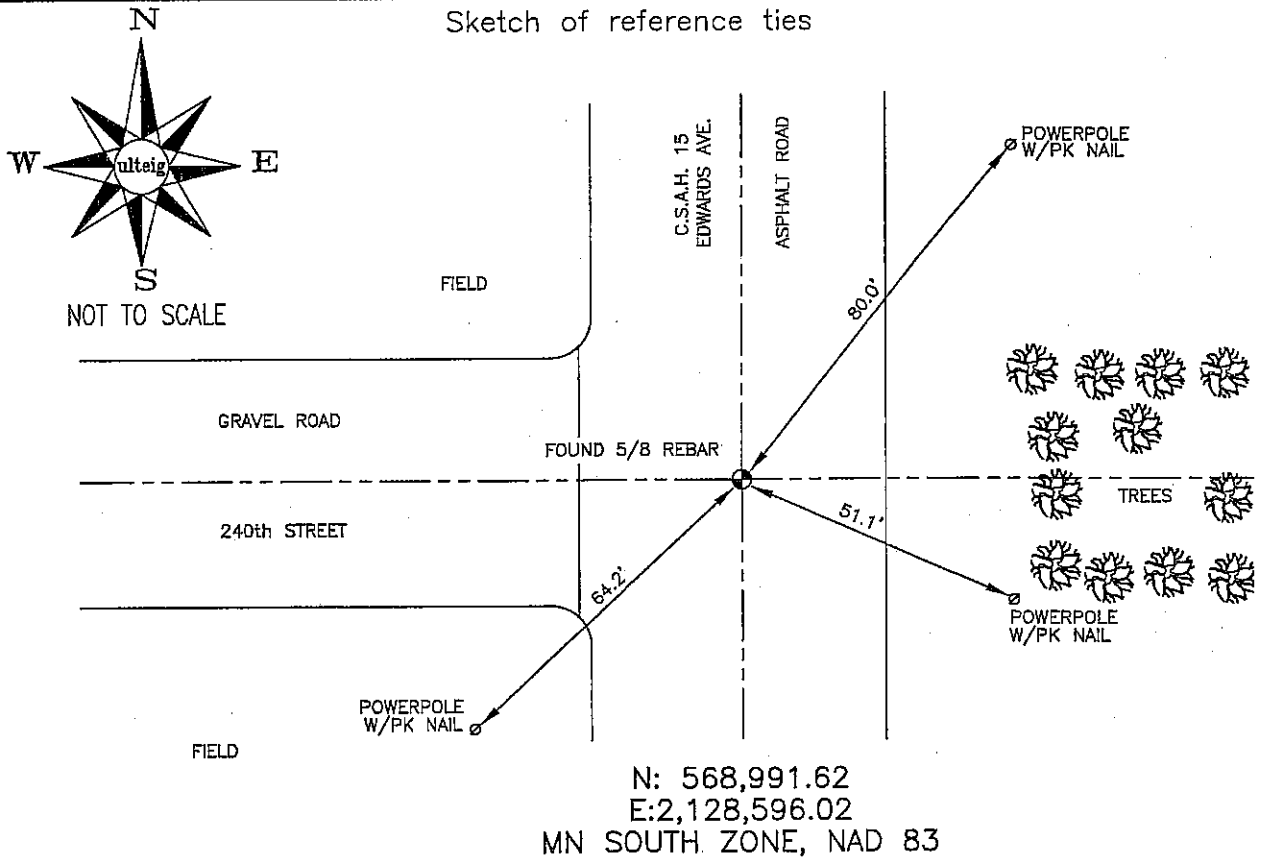
At the corner location shown on the sketch :

On 3/08/2006 found A 5/8" REBAR, 2" DEEP, IN THE C/L OF
THE NORTH-SOUTH ASPHALT PAVEMENT.

left monument as found, lowered monument, removed monument (explain)

On _____ set _____

Sketch of reference ties



Statement of evidence relative to this corner location is on back page

I hereby certify that this document and the data contained herein was prepared by me or under my direct supervision.

Thomas V. Jeff 5/17/06
 Signature Date

Registration No. 44563

Land Surveyor, Professional Engineer

County Surveyor, County Engineer

OFFICE OF THE COUNTY RECORDER

County of _____

I hereby certify that this document was filed in the Co. Recorders office at _____ M. on the _____ day of _____ A.D. , 20

County Recorder _____

By _____, Deputy

DOCUMENT NO. _____

STATEMENT OF EVIDENCE:

NORTHWEST CORNER, SECTION 15, T. 102 N., R. 42 W.,
NOBLES COUNTY, MINNESOTA

- 1868 Jewett & Howe, US. Deputy Surveyors, monumented corner.
- 3/08/2006 Ulteig Engineers, Inc., Survey Crew, Dennis Lavallie Party Chief,
found a 5/8" rebar, 2" deep, in the C/L of the north-south
asphalt pavement.
Ties: NE-80.0' to PK nail in SW face of wood, power pole;
SE-51.1' to PK nail in W face of wood, power pole;
SW-64.2' to PK nail in NW face of wood, power pole.