

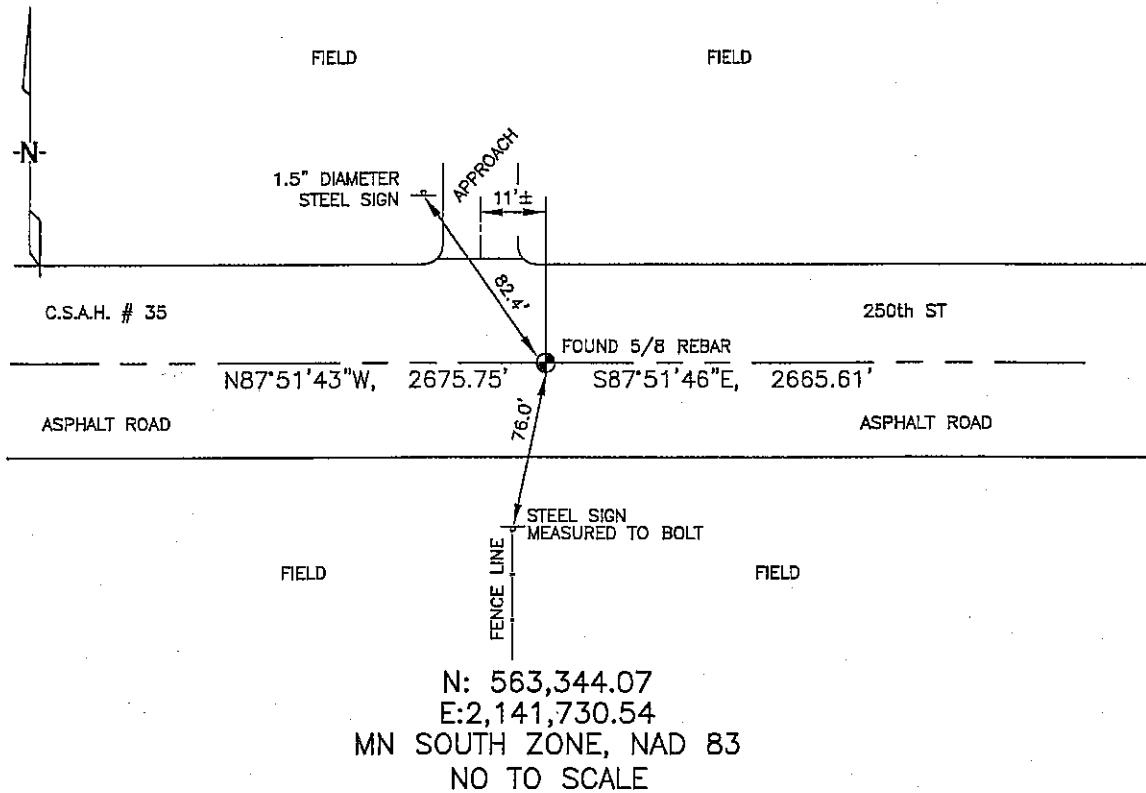
CERTIFICATE OF LOCATION OF GOVERNMENT CORNER

SOUTH 1/4 Corner of Section 13, Township 102N, Range 42W, 5th P.M.
 STATE OF MINNESOTA, County of NOBLES

At the corner location shown on the sketch:

- On 3/07/2006 found a 5/8" REBAR, 2" DEEP, IN C/L OF ASPHALT.
DATE
-
- left monument as found, lowered monument, removed monument (explain)
 On _____ placed a _____
DATE

SKETCH OF REFERENCE TIES



Statement of evidence relative to this corner location is on back of page.

I hereby certify that this document and the data contained herein was prepared by me or under my direct supervision.

Thomas V. Zell
 Thomas V. Zell
5/24/06
 DATE

Registration No. 44563

- Land Surveyor, Professional Engineer
 County Surveyor, County Engineer

OFFICE OF THE COUNTY RECORDER

County of _____

I hereby certify that this document was filed in
 the Co. Recorders office at _____ .M. on the
 _____ day of _____ A.D., 20____

County Recorder _____

By _____, Deputy

DOCUMENT NO. _____

STATEMENT OF EVIDENCE:

S 1/4 CORNER, SECTION 13, T. 102 N., R. 42 W.,
NOBLES COUNTY, MINNESOTA

- 1868 Jewett & Howe, US. Deputy Surveyors, monumented corner.
- 1912 Nobles County Found an iron pin
- 1959 Nobles County found an iron pin
(Established)
- 1973 Nobles County found an iron pin
- 3/07/2006 Ulteig Engineers, Inc., Survey Crew, Dennis Lavallie Party Chief,
found a 5/8" rebar in centerline e+w road, 11' east of field
approach.
- Ties: S-76.0' to bolt in steel sign post, up 62", North side.
NW-82.4' to centerline steel post, up 30".
W-2675.75 to SW cor of Sec 13, Bearing 87°51'43".
E-2665.61 to SE cor of Sec 13, Bearing 87°51'46"