

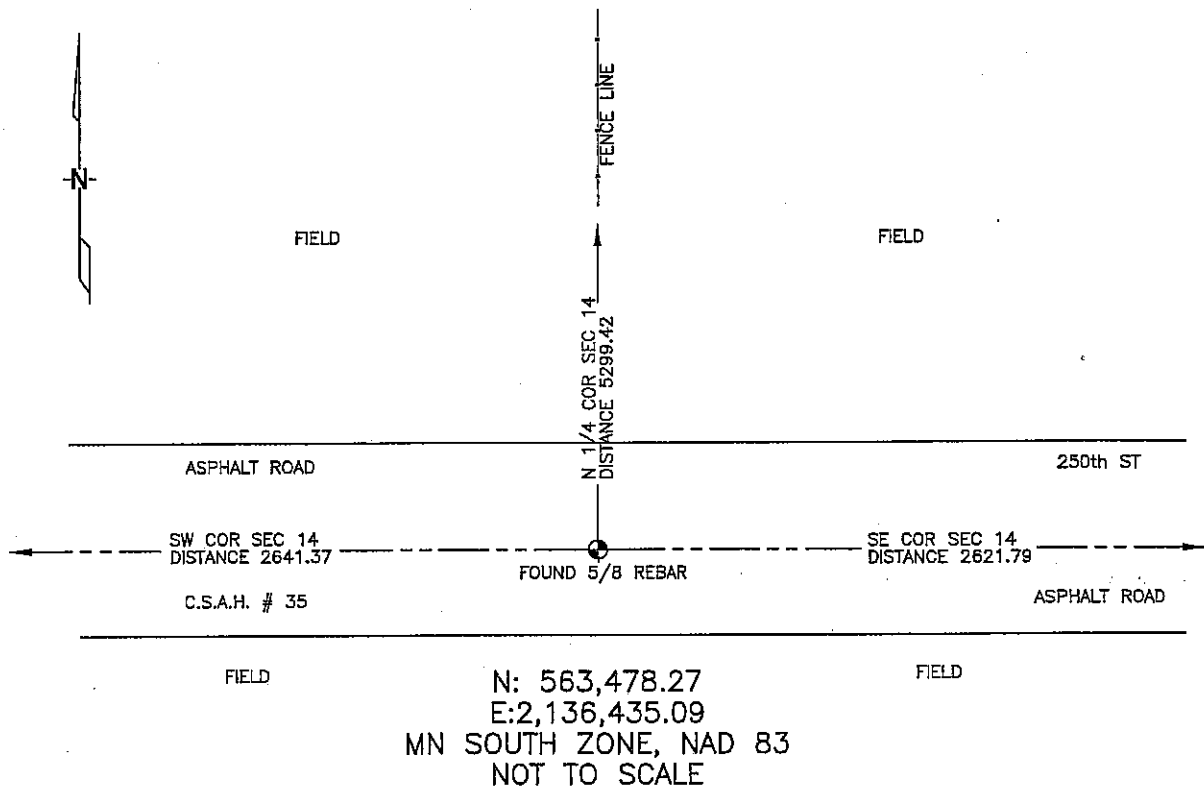
CERTIFICATE OF LOCATION OF GOVERNMENT CORNER

SOUTH 1/4 Corner of Section 14, Township 102N, Range 42W, 5th P.M.
 STATE OF MINNESOTA, County of NOBLES

At the corner location shown on the sketch:

- On 3/07/2006 found a 5/8" REBAR, IN C/L OF ASPHALT, OPPOSITE
DATE FENCE LINE RUNNING NORTH.
- left monument as found, lowered monument, removed monument (explain)
- On _____ placed a _____
DATE

SKETCH OF REFERENCE TIES



Statement of evidence relative to this corner location is on back of page.

I hereby certify that this document and the data contained herein was prepared by me or under my direct supervision.

Thomas V. Zeff 5/15/06
 Thomas V. Zeff DATE

Registration No. 44563
 Land Surveyor, Professional Engineer
 County Surveyor, County Engineer

OFFICE OF THE COUNTY RECORDER

County of _____

I hereby certify that this document was filed in
 the Co. Recorders office at _____ .M. on the
 _____ day of _____ A.D., 20____

County Recorder _____

By _____, Deputy

DOCUMENT NO. _____

STATEMENT OF EVIDENCE:

S 1/4 CORNER, SECTION 14, T. 102 N., R. 42 W.,
NOBLES COUNTY, MINNESOTA

- 1868 JEWETT & HOWE, US. Deputy Surveyors, monumented corner.
- 1902 Nobles County stone
- 1912 Nobles County found an iron pin
- 1959 Nobles County found iron pin
(reestablished)
- 1973 Nobles County found an iron pin
- 3/07/2006 Uiteig Engineers, Inc., Survey Crew, Dennis Lavallie Party Chief,
found a 5/8" rebar in centerline of asphalt road.

Ties: N-5299.42 to N 1/4 cor Sec 14
E-2621.79 to SE cor Sec 14
W-2641.37 to SW cor Sec 14