

### CERTIFICATE OF LOCATION OF GOVERNMENT CORNER

SOUTH 1/4 Corner of Section 16, Township 102N, Range 42W, 5TH P.M.

STATE OF MINNESOTA, County of NOBLES

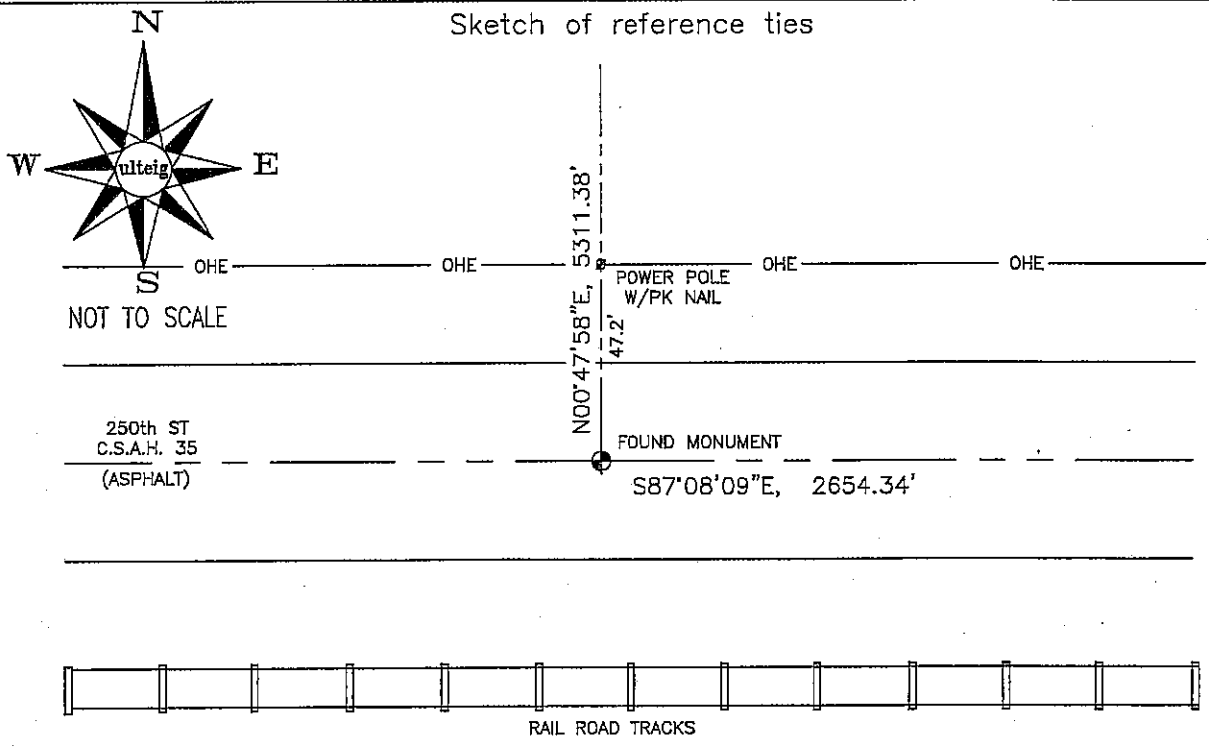
At the corner location shown on the sketch :

On 3/09/2006 found MONUMENT, 1" BELOW GRADE, IN PAVEMENT.

left monument as found,  lowered monument,  removed monument (explain)

On \_\_\_\_\_ set \_\_\_\_\_

Sketch of reference ties



N: 563,834.61  
E: 2,125,858.21  
MN SOUTH, NAD 83

Statement of evidence relative to this corner location is on back page

I hereby certify that this document and the data contained herein was prepared by me or under my direct supervision.

Thomas V. Zeff 5/17/06  
Thomas V. Zeff Date

Registration No. 44563  
 Land Surveyor,  Professional Engineer  
 County Surveyor,  County Engineer

OFFICE OF THE COUNTY RECORDER  
County of \_\_\_\_\_

I hereby certify that this document was filed in the Co. Recorders office at \_\_\_\_\_ .M. on the \_\_\_\_\_ day of \_\_\_\_\_ A.D. , 20

County Recorder \_\_\_\_\_  
By \_\_\_\_\_, Deputy

DOCUMENT NO. \_\_\_\_\_

STATEMENT OF EVIDENCE:

SOUTH 1/4 CORNER, SECTION 16, T. 102 N., R. 42 W.,  
NOBLES COUNTY, MINNESOTA

- 1868 Jewett & Howe, US. deputy Surveyors, monumented corner.
- 1912 Nobles Co. found an iron pin, no ties.
- 1919 Nobles Co. found iron pin, no ties.
- 1959 Nobles Co. found iron pin & reestablished corner, no ties.
- 1973 Nobles Co. found iron pin.  
Ties: NE-58.2' to top, of steel, fence post;  
N-49.2' to top, of steel, fence post;  
NW-61.45' to nail & disc in fence post.
- 3/09/2006 Ulteig Engineers, Inc., Survey Crew, Dennis Lavallie, Party Chief,  
found monument, 1" below grade, in C/L of asphalt pavement.  
Ties: N-47.2' to PK nail in S face of wood, power pole;  
N-5311.38' to North 1/4 corner, Section 16;  
E-2654.34' to SE corner, Section 16.