

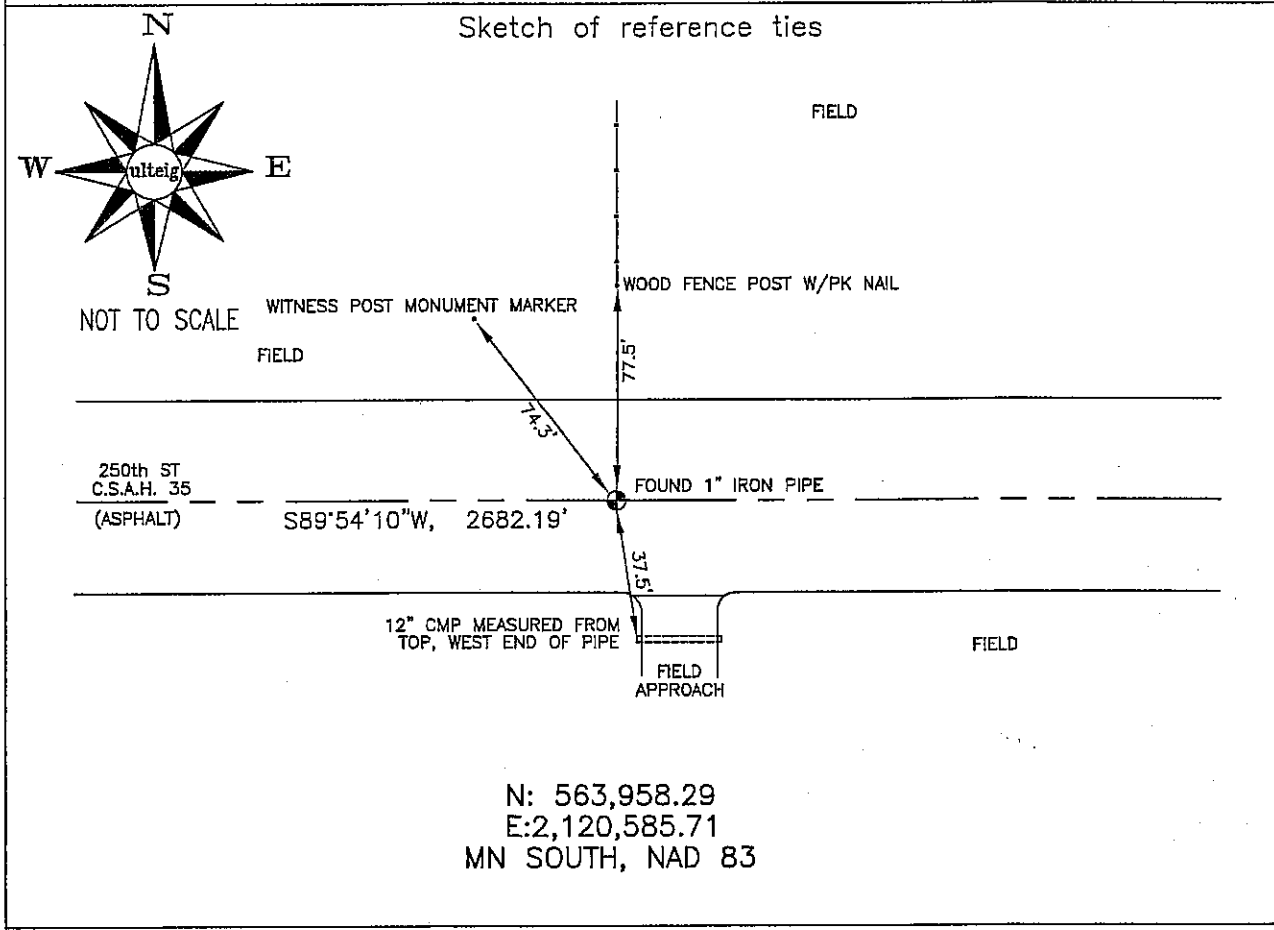
# CERTIFICATE OF LOCATION OF GOVERNMENT CORNER

SOUTH 1/4 Corner of Section 17, Township 102N, Range 42W, 5TH P.M.

STATE OF MINNESOTA, County of NOBLES

At the corner location shown on the sketch :

- On 3/9/2006 found 1" IRON PIPE, IN C/L OF PAVEMENT,  
OPPOSITE FENCE LINE RUNNING NORTH.
- left monument as found,  lowered monument,  removed monument (explain)
- On \_\_\_\_\_ set \_\_\_\_\_



Statement of evidence relative to this corner location is on back page

I hereby certify that this document and the data contained herein was prepared by me or under my direct supervision.

Thomas V. Jeff 5/17/06  
 Thomas V. Jeff Date  
 Registration No. 44563

- Land Surveyor,  Professional Engineer
- County Surveyor,  County Engineer

## OFFICE OF THE COUNTY RECORDER

County of \_\_\_\_\_

I hereby certify that this document was filed in the Co. Recorders office at \_\_\_\_\_ M. on the day of \_\_\_\_\_ A.D. , 20

County Recorder \_\_\_\_\_  
By \_\_\_\_\_, Deputy

DOCUMENT NO. \_\_\_\_\_

STATEMENT OF EVIDENCE:

SOUTH 1/4 CORNER, SECTION 17, T. 102 N., R. 42 W.,  
NOBLES COUNTY, MINNESOTA

- 1868 Jewett & Howe, US. Deputy Surveyors, monumented corner.
- 1912 Nobles Co. found an iron pin, no ties.
- 1966 Nobles Co. found iron pin & place a wood stake on top of it.  
Ties: N-32.55' to point of hub on corner of fence post;  
SW-45.48' to top, steel, fence post;  
SE-56.3' to nail & disc in telephone pole;  
NW-43.0' to top, steel, fence post.
- 2001 Nobles co. found iron pin & raised (corner) with 1"X42" iron pipe.  
Ties: S-37.55' to nail in C.M.P. of fence entrance;  
SE-49.8' to nail in C.M.P. of fence entrance;  
NE-41.3' to nail in C.M.P. of fence entrance.
- 3/09/2006 Ulteig Engineers, Inc., Survey Crew, Dennis Lavallie Party Chief,  
found a 1" iron pipe in the C/L of asphalt pavement, opposite  
a fence line running north.  
Ties: N-77.5' to PK nail in S face of wood, fence post;  
S-37.5' to nail in top, W end, 12" C.M.P.;  
NW-74.55' to C/L of mark, for Witness Post, marker;  
W-2682.19' to SW corner, Section 17.