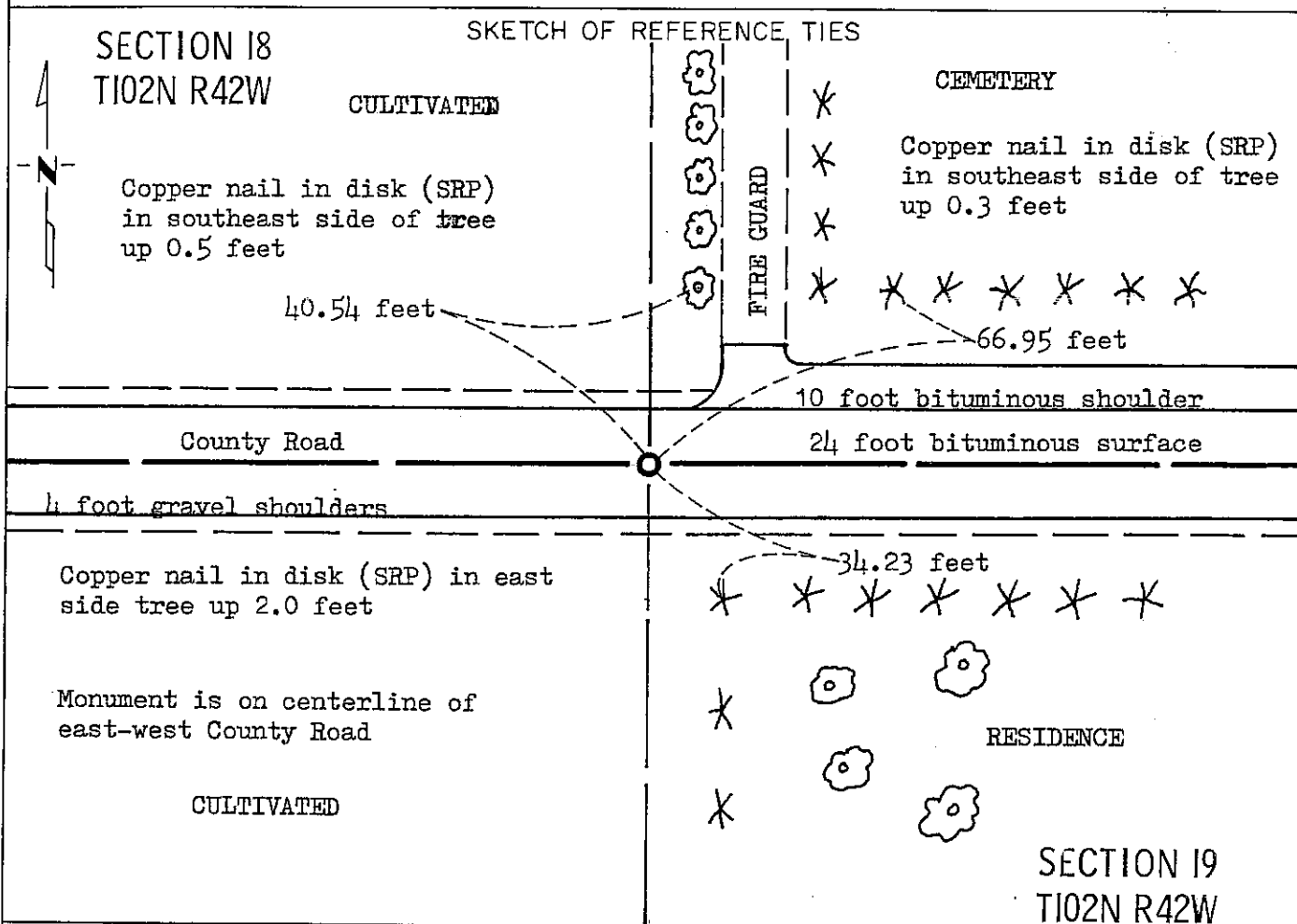


# CERTIFICATE OF LOCATION OF GOVERNMENT CORNER

SOUTH SIXTEENTH of Corner of Section 18, Township 102N, Range 42W, 5 P.M.  
SOUTHEAST QUARTER  
STATE OF MINNESOTA, County of NOBLES

At the corner location shown on the sketch:

- On June 23, 1988 found a nothing  
DATE
- left monument as found,  lowered monument,  removed monument (explain)
- On Aug. 3, 1988 placed a Minnesota Department of Transportation cast iron  
DATE monument flush



Statement of evidence relative to this corner location is on back of page.

I hereby certify that this document and the data contained herein was prepared by me or under my direct supervision.

Allan E. Schow 4-5-91  
SIGNATURE DATE

Registration No. 11858

- Land Surveyor,  Professional Engineer
- County Surveyor,  County Engineer

OFFICE OF THE COUNTY RECORDER  
County of Nobles

I hereby certify that this document was filed in the Co. Recorders office at 4:10 P. .M. on the 15th day of October A.D., 19 91

County Recorder James Howard

By \_\_\_\_\_, Deputy

DOCUMENT NO. 245760

Statement of Evidence:

South Sixteenth Corner of the Southeast Corner  
of Section 18 T102N R42W 5th P.M.

- Nov. 2, 1885 W. A. Peterson, Civil Engineer and Surveyor, on his plat of the Adrian Cemetery, shows the corner is a 1/8 post.
- Sept. 25, 1911 W. A. Saxon, Nobles County Surveyor, on a plat indicates that this corner is marked with a stone with an "+" on top.
- April 23, 1938 G. D. McMarty, Nobles County Surveyor, on a resurvey plat of the Adrian Cemetery shows this corner to be a 1/8 post.
- June 23, 1988 Minnesota Department of Transportation survey crew members O. Berkness, W. Hartman and R. Maras using a tractor mounted backhoe, excavated a trench at the occupation lines and found no evidence of the old stone or any other monument.
- Aug. 3, 1988 O. Berkness, Senior Highway Technician for the Minnesota Department of Transportation, re-established the corner using lot and block corners of the Adrian Cemetery and dimensions as shown on the plat. A Minnesota Department of Transportation cast iron monument was placed flush with the bituminous surface to mark the corner.

For additional information, including field measurements and photographs, contact the Minnesota Department of Transportation in Windom, Minnesota.