

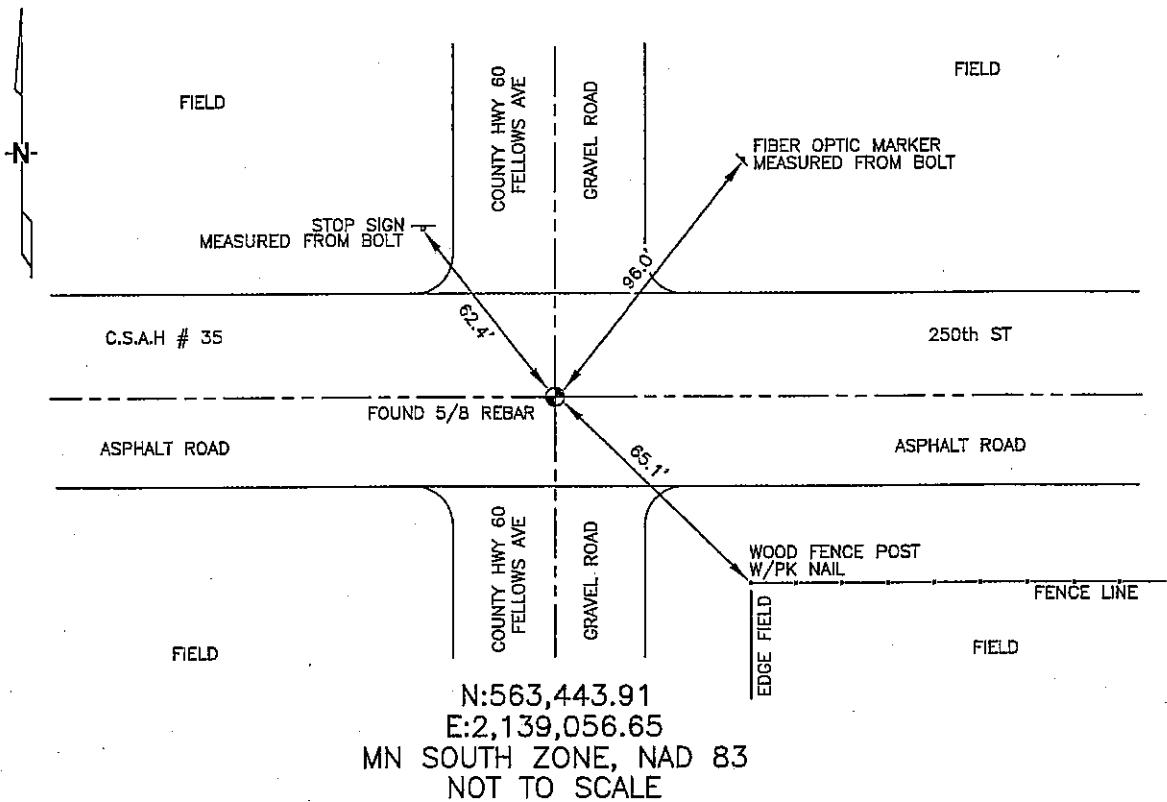
# CERTIFICATE OF LOCATION OF GOVERNMENT CORNER

SOUTHWEST Corner of Section 13, Township 102N, Range 42W, 5th P.M.  
 STATE OF MINNESOTA, County of NOBLES

At the corner location shown on the sketch:

- On 3/07/2006 found a 5/8" REBAR, 2" DEEP, IN C/L OF ASPHALT.  
DATE
- left monument as found,     lowered monument,     removed monument (explain)  
 On \_\_\_\_\_ placed a \_\_\_\_\_  
DATE

## SKETCH OF REFERENCE TIES



Statement of evidence relative to this corner location is on back of page.

I hereby certify that this document and the data contained herein was prepared by me or under my direct supervision.

Thomas V. Zoff                      5/18/06  
Thomas V. Zoff                      DATE

Registration No. 44563

- Land Surveyor,     Professional Engineer  
 County Surveyor,     County Engineer

OFFICE OF THE COUNTY RECORDER

County of \_\_\_\_\_

I hereby certify that this document was filed in the Co. Recorders office at \_\_\_\_\_ M. on the \_\_\_\_\_ day of \_\_\_\_\_ A.D., 20\_\_\_\_

County Recorder \_\_\_\_\_

By \_\_\_\_\_, Deputy

DOCUMENT NO. \_\_\_\_\_

STATEMENT OF EVIDENCE:

\_\_\_\_\_ SW \_\_\_\_\_ CORNER, SECTION 13, T. 102 N., R. 42 W.,  
\_\_\_\_\_ NOBLES \_\_\_\_\_ COUNTY, MINNESOTA

- 1868 JEWETT & HOWE, US. Deputy Surveyors, monumented corner.
- 1902 Nobles County found an stone
- 1912 Nobles County found an iron pin
- 1963 MN DOT R/W Map for I-90 calls for a "brass plug" at corner.
- 1966 Nobles County found an brass plug
- 1973 Nobles County found an iron pin
- 1990 Nobles County found an iron pin
- 3/07/2006 Ulteig Engineers, Inc., Survey Crew, Dennis Lavallie Party Chief,  
found a 5/8" rebar in centerline of asphalt road.
- Ties: NE-96.0 to bolt in fiber optic cable marker post up 55"  
SE-65.1 to pk nail in wood fnc post, up 18", next to  
old tie.  
NW-62.4' to bolt in steel stop sign, 20" up.