

CERTIFICATE OF LOCATION OF GOVERNMENT CORNER

SOUTHWEST Corner of Section 14, Township 102N, Range 42W, 5th P.M.

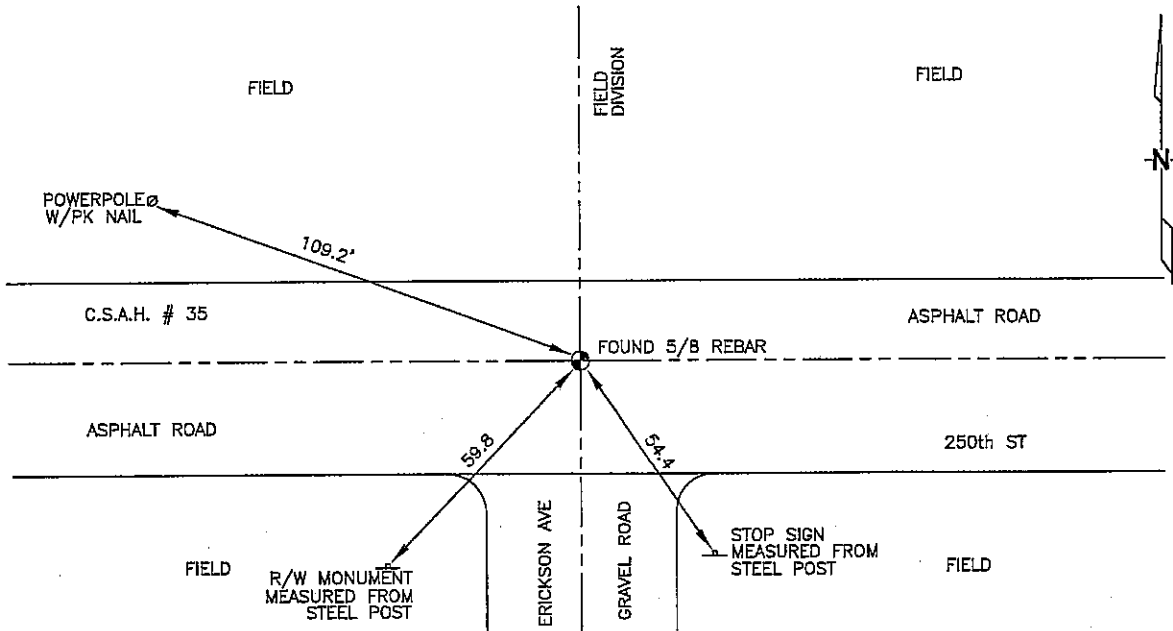
STATE OF MINNESOTA, County of NOBLES

At the corner location shown on the sketch:

On 3/07/2006 found a 5/8" REBAR IN ASPHALT PAVEMENT.
DATE

left monument as found, lowered monument, removed monument (explain)
 On _____ placed a _____
DATE

SKETCH OF REFERENCE TIES



N: 563,528.02
 E: 2,133,794.18
 MN SOUTH ZONE, NAD 83
 NOT TO SCALE

Statement of evidence relative to this corner location is on back of page.

I hereby certify that this document and the data contained herein was prepared by me or under my direct supervision.

Thomas V. Zeff 5/24/06
 Thomas V. Zeff DATE

Registration No. 44563

- Land Surveyor, Professional Engineer
 County Surveyor, County Engineer

OFFICE OF THE COUNTY RECORDER

County of _____

I hereby certify that this document was filed in the Co. Recorders office at _____ .M. on the _____ day of _____ A.D., 20____

County Recorder _____

By _____, Deputy

DOCUMENT NO. _____

STATEMENT OF EVIDENCE:

SW CORNER, SECTION 14, T. 102 N., R. 42 W.,
NOBLES COUNTY, MINNESOTA

- 1868 JEWETT & HOWE, US. Deputy Surveyors, monumented corner.
- 1902 Nobles County set stone
- 1912 Nobles County found an stone
- 1936 Nobles County found stone
- 1959 Nobles County found an brass plug
- 1963 MN DOT R/W Map fot I-90, calls for a brass plug at corner.
- 3/07/2006 Ulteig Engineers, Inc., Survey Crew, Dennis Lavallie Party Chief,
found a 5/8" rebar in asphalt road.
- Ties: NW-109.02 to pk in wood power pole, up 10", SE side
SW-59.8 to center of steel R/W monument
SE-54.4 to center of steel stop sign post, up 36"