

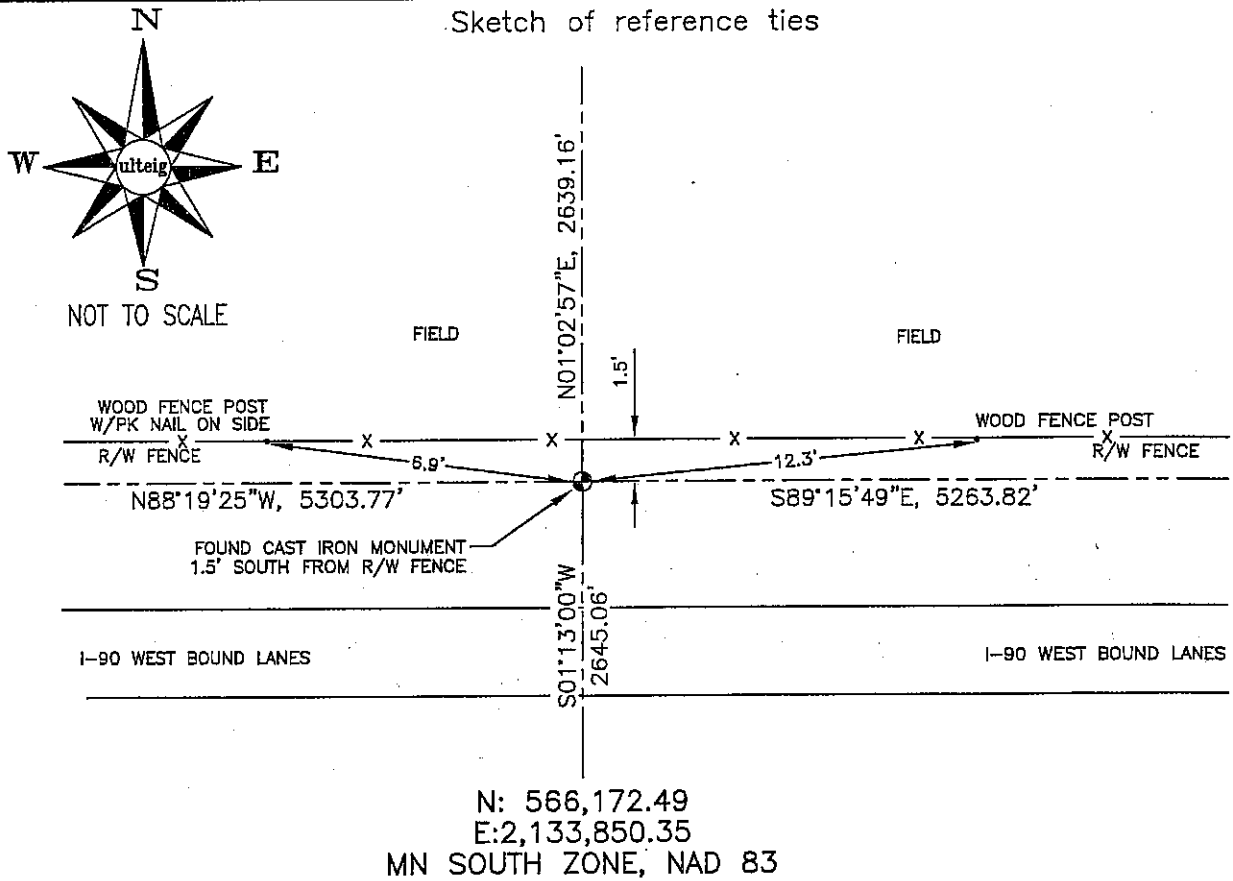
### CERTIFICATE OF LOCATION OF GOVERNMENT CORNER

WEST 1/4 Corner of Section 14, Township 102N, Range 42W, 5TH P.M.

STATE OF MINNESOTA, County of NOBLES

At the corner location shown on the sketch :

- On 3/08/2006 found A CAST IRON MONUMENT, 1.5' SOUTH FROM  
I-90 R/W FENCE LINE.  
 left monument as found,  lowered monument,  removed monument (explain)  
 On \_\_\_\_\_ set \_\_\_\_\_



Statement of evidence relative to this corner location is on back page

I hereby certify that this document and the data contained herein was prepared by me or under my direct supervision.

Thomas D. Zeff 5/17/06  
 Thomas D. Zeff Date

- Registration No. 44563  
 Land Surveyor,  Professional Engineer  
 County Surveyor,  County Engineer

#### OFFICE OF THE COUNTY RECORDER

County of \_\_\_\_\_

I hereby certify that this document was filed in the Co. Recorders office at \_\_\_\_\_ .M. on the \_\_\_\_\_ day of \_\_\_\_\_ A.D. , 20

County Recorder \_\_\_\_\_  
 By \_\_\_\_\_, Deputy

DOCUMENT NO. \_\_\_\_\_

STATEMENT OF EVIDENCE:

SOUTHWEST CORNER, SECTION 15, T. 102 N., R. 42 W.,  
NOBLES COUNTY, MINNESOTA

- 1868 Jewett & Howe, US. Deputy Surveyors, monumented corner.
- 1912 Nobles Co. found an iron pin, no ties.
- 1919 Nobles Co. found iron pin, no ties.
- 1959 Nobles Co. found iron pin.  
Ties: NW-81.94' to power pole;  
NE-114.89' to corner of fence post;  
SW-82.1' to telephone pole.
- 1963 MN DOT R/W Map for I-90 calls for, a "brass plug, in place"  
at SW corner.
- 1973 Nobles Co. found iron pin, no ties.
- 3/09/2006 Ulteig Engineers, Inc., Survey Crew, Dennis Lavallie Party Chief,  
found a 5/8" rebar, 1" deep in C/L of north-south asphalt  
pavement and 4.5'± south from C/L of east-west asphalt pavement.  
Ties: SE-55.3' to bolt in steel, Street Sign, post;  
SW-93.8' to bolt in steel Delineator Post;  
NW-79.0' to PK nail in E face of wood, power pole.