

CERTIFICATE OF LOCATION OF GOVERNMENT CORNER

WEST 1/4 Corner of Section 15, Township 102N, Range 42W, 5th P.M.

STATE OF MINNESOTA, County of NOBLES

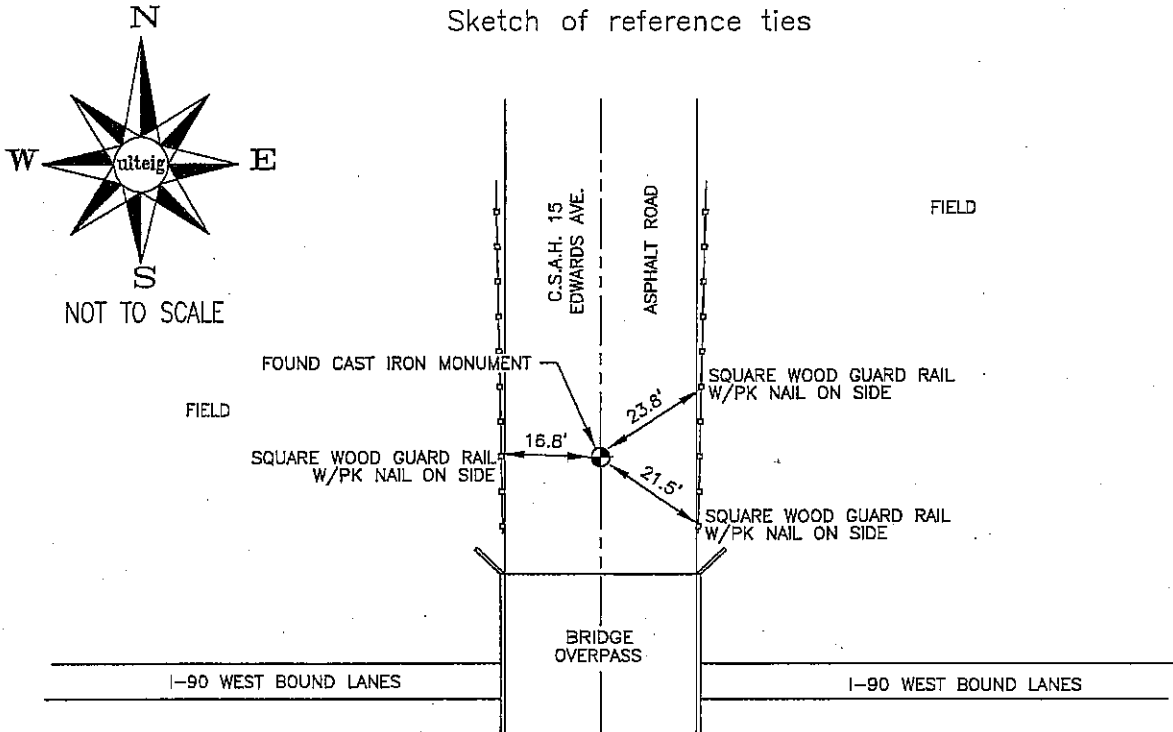
At the corner location shown on the sketch :

On 3/08/2006 found A CAST IRON MONUMENT, 3" DEEP, IN C/L
OF ASPHALT PAVEMENT.

left monument as found, lowered monument, removed monument (explain)

On _____ set _____

Sketch of reference ties



N: 566,327.63
 E: 2,128,548.85
 MN SOUTH ZONE, NAD 83

Statement of evidence relative to this corner location is on back page

I hereby certify that this document and the data contained herein was prepared by me or under my direct supervision.

Thomas V. Zell 5/17/06
 Thomas V. Zell Date

Registration No. 44563

Land Surveyor, Professional Engineer

County Surveyor, County Engineer

OFFICE OF THE COUNTY RECORDER

County of _____

I hereby certify that this document was filed in the Co. Recorders office at _____ M. on the day of _____ A.D. , 20

County Recorder _____

By _____, Deputy

DOCUMENT NO. _____

STATEMENT OF EVIDENCE:

WEST 1/4 CORNER, SECTION 15, T. 102 N., R. 42 W.,
NOBLES COUNTY, MINNESOTA

- 1868 Jewett & Howe, US. Deputy Surveyors, monumented corner.
- 1938 Nobles Co. found stone & placed a wood stake on top of it; no ties.
- 1963 MN DOT R/W Map for I-90, calls for "1/4 corner existing, from Nobles Co Engineering ties".
- 3/08/2006 Uteig Engineers, Inc., Survey Crew, Dennis Lavallie Party Chief, found a cast iron monument in the C/L of the asphalt pavement.
Ties: NE-23.8' to PK nail in a square, wood, guard rail post;
SE-21.5' to PK nail in a square, wood, guard rail post;
W-16.8' to PK nail in a square, wood, guard rail post.