

CERTIFICATE OF LOCATION OF GOVERNMENT CORNER

WEST 1/4 Corner of Section 16, Township 102N, Range 42W, 5TH P.M.

STATE OF MINNESOTA, County of NOBLES

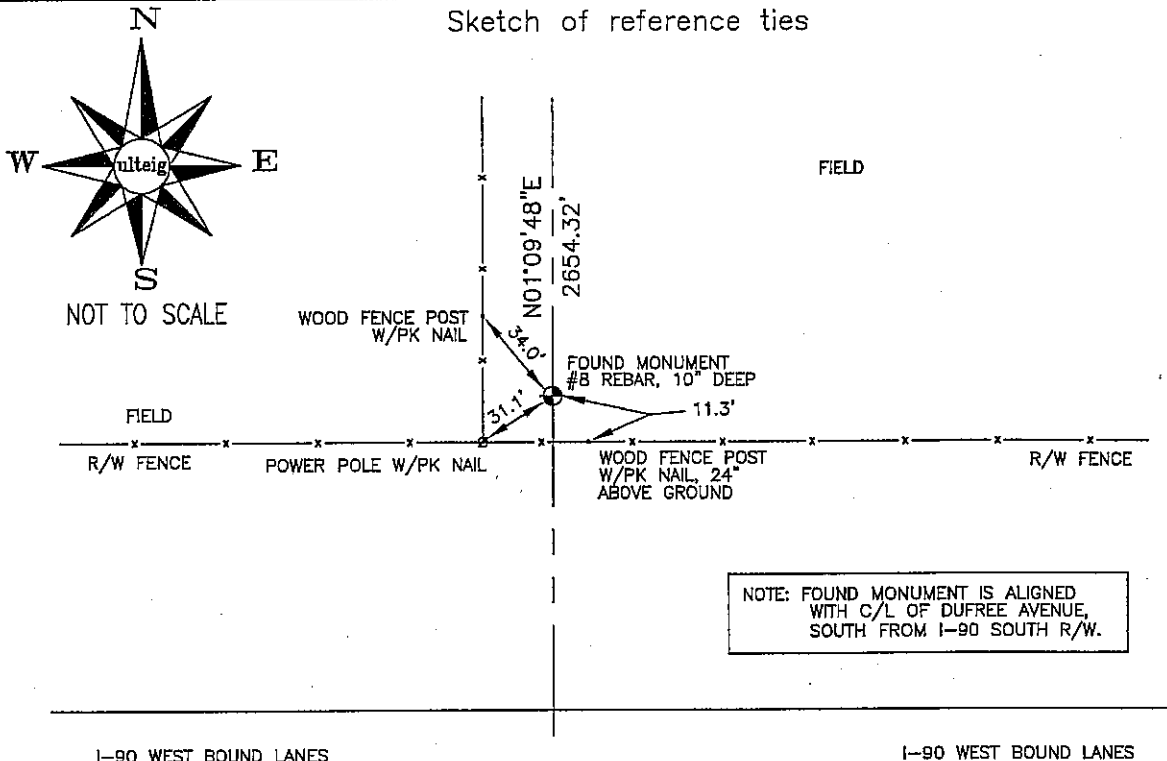
At the corner location shown on the sketch :

On 3/08/2006 found 1" REBAR 10" DEEP, ON LINE WITH C/L OF
DUFREE AVE. TO THE SOUTH.

left monument as found, lowered monument, removed monument (explain)

On _____ set _____

Sketch of reference ties



NOTE: FOUND MONUMENT IS ALIGNED WITH C/L OF DUFREE AVENUE, SOUTH FROM I-90 SOUTH R/W.

N: 566,629.33
E: 2,123,249.59
MN SOUTH, NAD 83

Statement of evidence relative to this corner location is on back page

I hereby certify that this document and the data contained herein was prepared by me or under my direct supervision.

Thomas J. Zeff 5/17/06
Thomas J. Zeff Date
Registration No. 44563

- Land Surveyor, Professional Engineer
- County Surveyor, County Engineer

OFFICE OF THE COUNTY RECORDER

County of _____

I hereby certify that this document was filed in the Co. Recorders office at _____ M. on the day of _____ A.D., 20

County Recorder _____
By _____, Deputy

DOCUMENT NO. _____

STATEMENT OF EVIDENCE:

WEST 1/4 CORNER, SECTION 16, T. 102 N., R. 42 W.,
NOBLES COUNTY, MINNESOTA

- 1868 Jewett & Howe, US. Deputy Surveyors, monumented corner.
- 1912 Nobles Co. found iron pine, no ties.
- 1919 Nobles Co. found iron pine, no ties.
- 1939 Nobles Co. found iron pin, no ties.
- 1959 Nobles Co. found iron pin, no ties.
- 1963 MN DOT R/W Map for I-90 calls for, "1"X2" oak stake in place,"
at 1/4 corner.
- 3/08/2006 Ulteig Engineers, Inc., Survey Crew, Dennis Lavallie Party Chief,
found a 1" rebar, 10" deep, in line with C/L of Durfee Ave.
southerly from I-90 south R/W line.
Ties: S-11.3' to I-90, north R/W fence line;
SW-31.1' to PK nail in wood, power pole;
NW-34.0' to PK nail in wood, fence post;
N-2654.32' to NW corner, Section 16;