

CERTIFICATE OF LOCATION OF GOVERNMENT CORNER

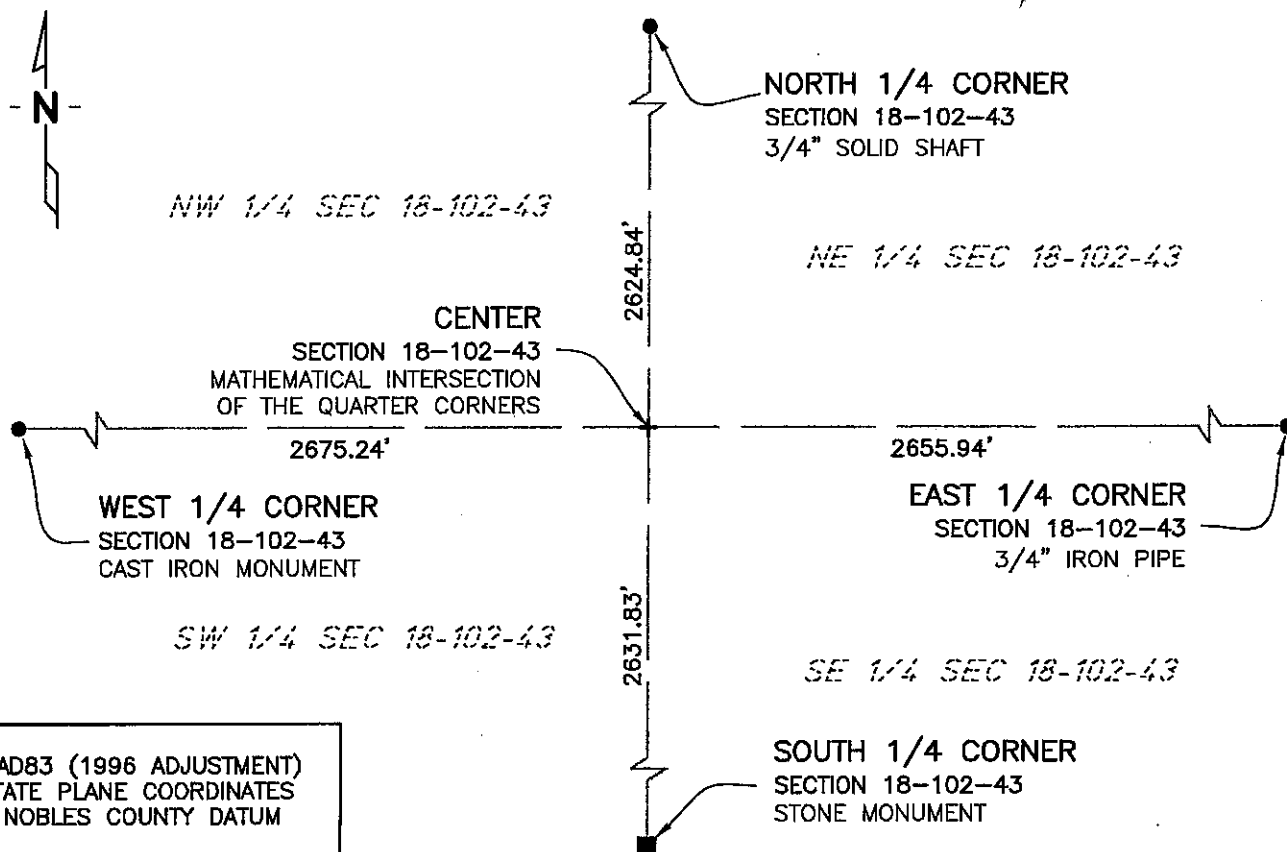
_____ CENTER _____ Corner of Section 18, Township 102 N, Range 43 W, 5th P.M.
STATE OF MINNESOTA, County of NOBLES

At the corner location shown on the sketch:

☐ On 11/08/02 found a NOTHING
DATE

☐ left monument as found, ☐ lowered monument, ☐ removed monument (explain)
☒ On 12/09/02 placed a CALCULATED POSITION AT THE INTERSECTION OF THE
DATE
QUARTER CORNERS

SKETCH OF REFERENCE TIES



NAD83 (1996 ADJUSTMENT)
STATE PLANE COORDINATES
NOBLES COUNTY DATUM

N= 150355.7032
E= 475284.4586

BOOK: NOBLES CO. PG. 1
I:\NOBLS\CERTIFICATES\C18-102-43

Statement of evidence relative to this corner location is on back of page.

I hereby certify that this document and the data contained herein was prepared by me or under my direct supervision.

JANELE FOWLDS
Registration No. 26748
☒ Land surveyor, ☐ Professional Engineer
☐ County Surveyor, ☐ County Engineer

DATE

OFFICE OF THE COUNTY RECORDER

County of _____

I hereby certify that this document was filed in the Co. Recorders office at ____M. on the _____ day of _____ A.D., 19____

County Recorder _____

By _____, Deputy

DOCUMENT NO. _____

Statement of Evidence

Center of Section 18, Township 102 North, Range 43 West

2002 On December 10, Bolton & Menk, Inc. calculated a position at the intersection of straight lines between the Quarter Section Corners.