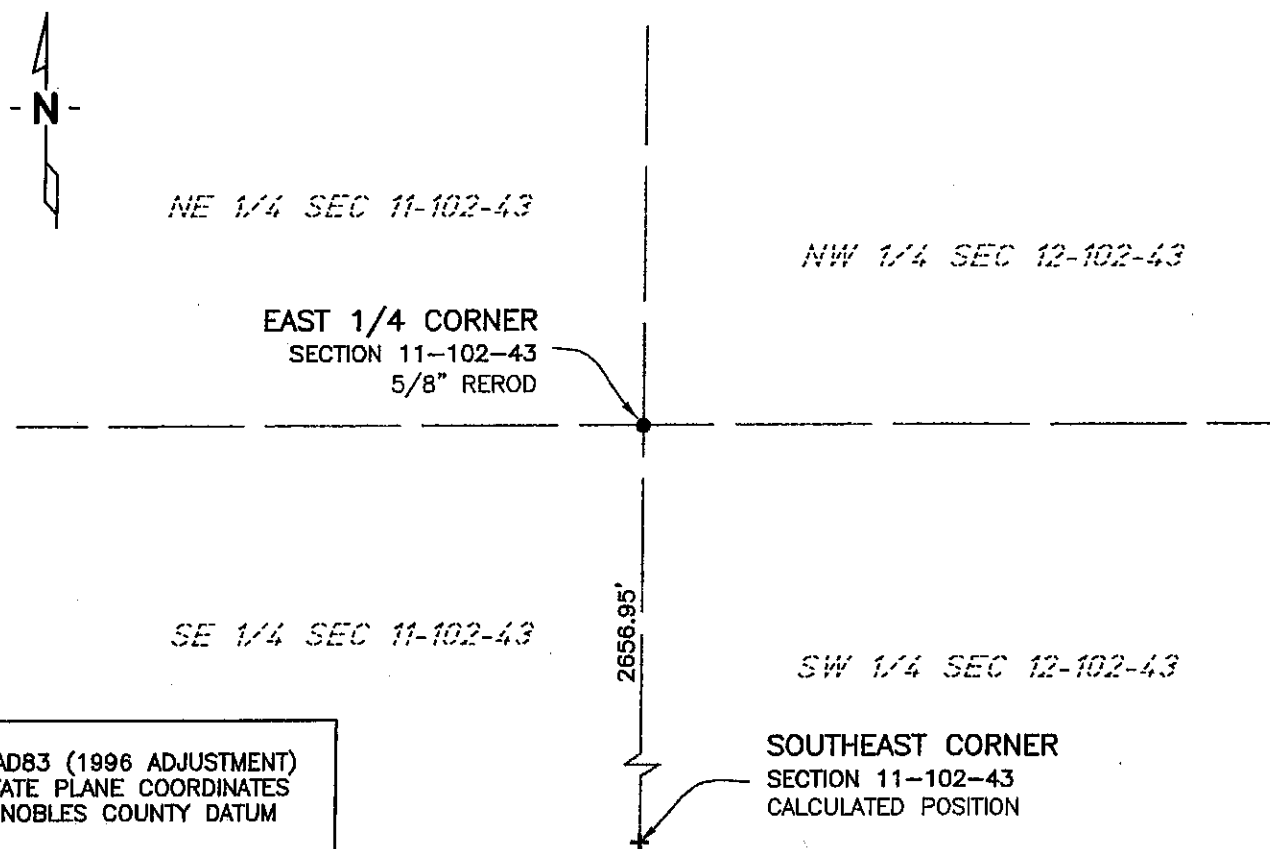


**CERTIFICATE OF LOCATION OF GOVERNMENT CORNER**EAST QUARTER Corner of Section 11, Township 102 N, Range 43 W, 5th P.M.STATE OF MINNESOTA, County of NOBLES

At the corner location shown on the sketch:

☒ On 11/13/02 found a 5/8" REROD  
DATE☒ left monument as found, ☐ lowered monument, ☐ removed monument (explain)☐ On \_\_\_\_\_ placed a \_\_\_\_\_  
DATE

## SKETCH OF REFERENCE TIES

NAD83 (1996 ADJUSTMENT)  
STATE PLANE COORDINATES  
NOBLES COUNTY DATUM

N= 155565.868

E= 499212.975

SOUTHEAST CORNER  
SECTION 11-102-43  
CALCULATED POSITIONBOOK: NOBLES CO. PG. 31  
I:\NOBLES\CERTIFICATES\E11-102-43

Statement of evidence relative to this corner location is on back of page.

I hereby certify that this document and the data contained herein was prepared by me or under my direct supervision.

Janele Fowlds  
JANELE FOWLDS10/4/05  
DATERegistration No. 26748☒ Land surveyor, ☐ Professional Engineer☐ County Surveyor, ☐ County Engineer

OFFICE OF THE COUNTY RECORDER

County of \_\_\_\_\_

I hereby certify that this document was filed in the Co. Recorders office at \_\_\_\_ M. on the \_\_\_\_\_ day of \_\_\_\_\_ A.D., 19\_\_\_\_

County Recorder \_\_\_\_\_

By \_\_\_\_\_, Deputy

DOCUMENT NO. \_\_\_\_\_

Statement of Evidence

East Quarter Corner Section 11, Township 102 North, Range 43 West

According to the Original Survey notes located in the Secretary of States Office, the East Quarter of Section 11 was established as follows: North between Sections 11 & 12, Variance 11 degrees 20 minutes, at 40.00 chains set a post in mound with pits for the Quarter Section Corner.

2002            On November 13, Bolton & Menk, Inc. found a 5/8" Rerod 0.5' below the surface in the center of a township road.