

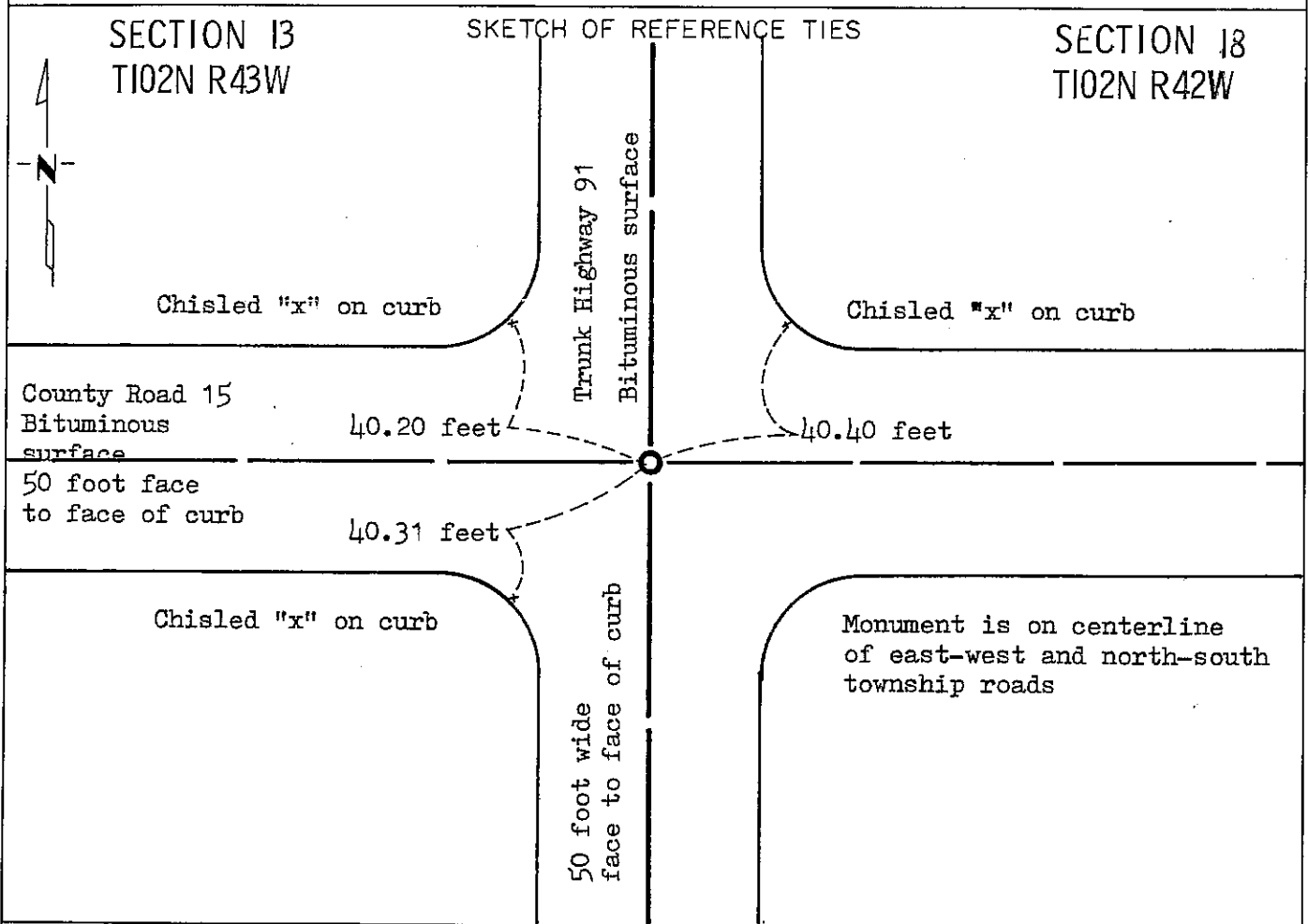
CERTIFICATE OF LOCATION OF GOVERNMENT CORNER

EAST QUARTER Corner of Section 13, Township 102N, Range 43N, 5 P.M.

STATE OF MINNESOTA, County of NOBLES

At the corner location shown on the sketch:

- On June 30, 1988 found a 3/4 inch iron pin flush, brass plug down 0.42 feet
DATE
- left monument as found, lowered monument, removed monument (explain)
- On Aug. 3, 1988 placed a Minnesota Department of Transportation cast iron
DATE
monument flush



Statement of evidence relative to this corner location is on back of page.

I hereby certify that this document and the data contained herein was prepared by me or under my direct supervision.

Allen E. Schorn 4-5-91
SIGNATURE DATE

Registration No. 11858

- Land Surveyor, Professional Engineer
- County Surveyor, County Engineer

OFFICE OF THE COUNTY RECORDER

County of Nobles

I hereby certify that this document was filed in the Co. Recorders office at 4:30 P. .M. on the 15th day of October A.D., 19 91

County Recorder James Howard

By _____, Deputy

DOCUMENT NO. 245764

Statement of Evidence: East Quarter Corner of Section 13 T102N R43W 5th P.M.

- July, 1867 The original Public Land Survey of the Range line between Ranges 42W and 43W was run in 1867 by Deputy Surveyor T. B. Walker, and his notes read, "set $\frac{1}{4}$ sec. cor. post in mound".
- 1891, 1902, 1911 Nobles County Highway record shows a stone at the corner.
- 1930 Minnesota Highway Department construction plans for Trunk Highway 16=9 show the corner is at the intersection of Main St. and Pearl St., but do not show the type of monument. (P.O.T. Station 1499+47.5 = Section line)
- 1959 Nobles County Highway records show a brass plug inplace.
- March 21, 1974 S. E. Baker, Minnesota Highway Department Survey crew chief, found a brass plug flush with the bituminous surface. The brass plug was at the intersection of the centerline of a north-south and an east-west road.
- Sept. 17, 1975 D. Almquist, Minnesota Department of Transportation Survey crew chief, found a brass plug down 1 inch. He placed a $\frac{3}{4}$ inch by 3 inch iron plug to replace the brass plug.
- Feb. 13, 1978 Minnesota Department Survey crew members Foster, Verdoorn and Warner located a $\frac{3}{4}$ inch iron plug at the intersection of the centerlines of Trunk Highway 91 and County State Aid Highway 35 as described.
- June 30, 1988 A Minnesota Department of Transportation Survey crew consisting of O. Berkness, W. Hartman and D. Ernst, excavated a trench 8 feet east-west and 9 feet north-south to a depth 4.5 feet and found no other monument other than the iron pin and the brass plug. To verify the location of the found brass plug, the survey crew traversed through several block corners in the Jones Addition. This traverse confirmed that the brass plug was within one inch of its correct location as shown on the plat. On August 3, 1988 a Minnesota Department of Transportation cast iron monument was placed at the exact location of the brass plug to mark the location of this corner.

The inplace location of the brass plug is compatible with the occupation lines within the section. An analysis of the Statement of Evidence and the field traverse results indicate that the brass plug is in a reasonable location for the corner.

For additional information, including field measurements and photographs, contact the Minnesota Department of Transportation in Windom, Minnesota.

Tract 245764 Compared _____
 Photo 10/1/88
 Fee 30