

CERTIFICATE OF LOCATION OF GOVERNMENT CORNER

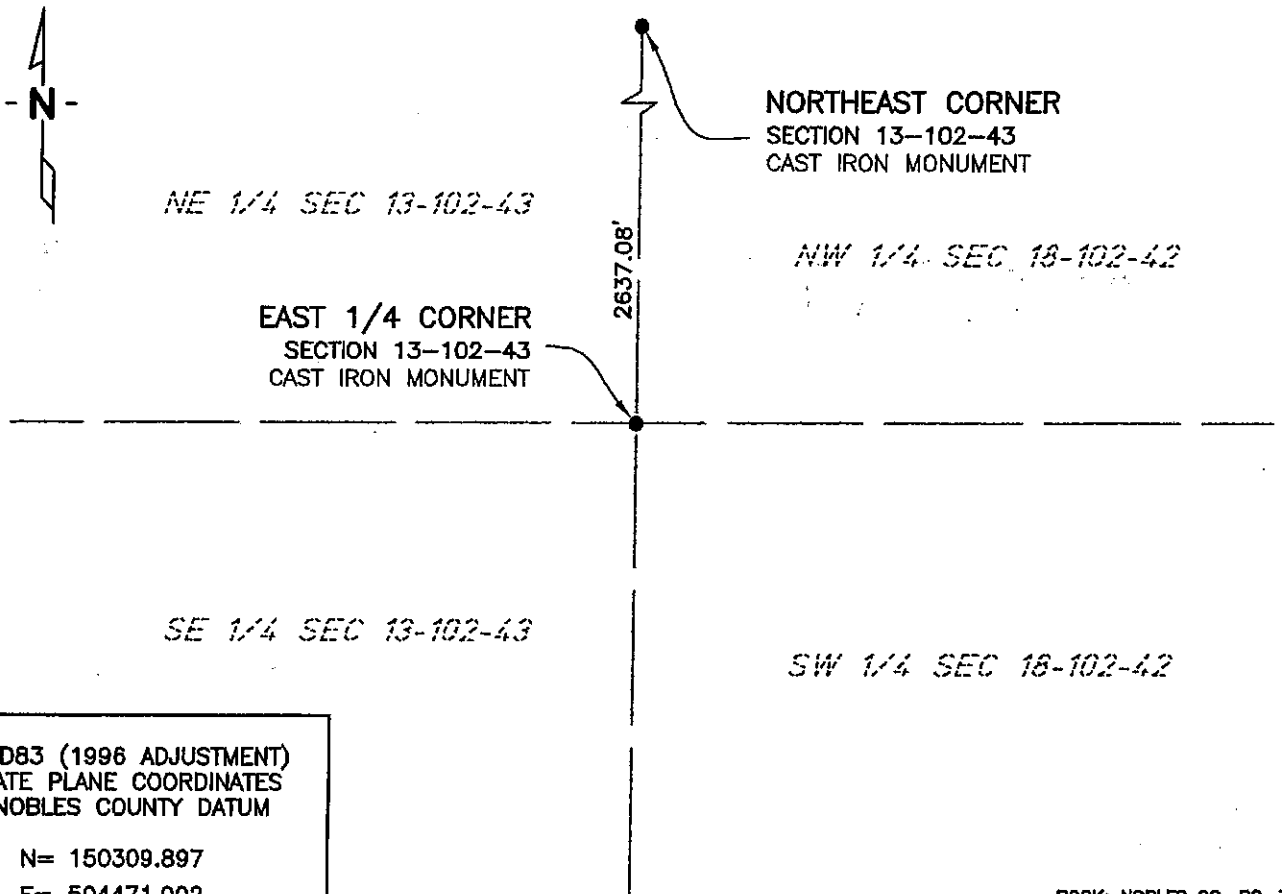
EAST QUARTER Corner of Section 13, Township 102 N, Range 43 W, 5th P.M.

STATE OF MINNESOTA, County of NOBLES

At the corner location shown on the sketch:

- On 12/19/02 found a BROKEN CAST IRON MONUMENT
DATE
- left monument as found, lowered monument, removed monument (explain)
- On _____ placed a _____
DATE

SKETCH OF REFERENCE TIES



NAD83 (1996 ADJUSTMENT)
 STATE PLANE COORDINATES
 NOBLES COUNTY DATUM

N= 150309.897
 E= 504471.002

BOOK: NOBLES CO. PG. 37
 I:\NOBLS\CERTIFICATES\E13-102-43

Statement of evidence relative to this corner location is on back of page.

I hereby certify that this document and the data contained herein was prepared by me or under my direct supervision.

Janele Fowlds 10/4/05
JANELE FOWLDS DATE

Registration No. 26748

- Land surveyor, Professional Engineer
- County Surveyor, County Engineer

OFFICE OF THE COUNTY RECORDER

County of _____
 I hereby certify that this document was filed in the Co. Recorders office at ____M. on the _____ day of _____ A.D., 19____

County Recorder _____

By _____, Deputy

DOCUMENT NO. _____

Statement of Evidence

East Quarter Corner Section 13, Township 102 North, Range 43 West

According to the Original Survey notes located in the Secretary of States Office, the East Quarter of Section 13 was established as follows: North on the true line between Ranges 42 & 43, Township 102, between Sections 13 & 18, Variance 11 degrees 15 minutes, at 40.00 chains set a post in mound for the Quarter Section Corner.

- 1891 Nobles County Highway Department records show a stone monument.
- 1902 Nobles County Highway Department records show a stone monument.
- 1911 Nobles County Highway Department records show a stone monument.
- 2002 On December 19, Bolton & Menk, Inc. found a broken Cast Iron Monument.

The evidence is not conclusive as to the true corner location, however the occupational and collateral evidence suggest that this is a reasonable location as to the corner. Additional information regarding the preparation of this certificate can be obtained by contacting: Bolton & Menk, Inc., Mankato, MN.