

CERTIFICATE OF LOCATION OF GOVERNMENT CORNER

EAST 1/4 Corner of Section 14, Township 102N, Range 43W, 5TH P.M.

STATE OF MINNESOTA, County of NOBLES

At the corner location shown on the sketch :

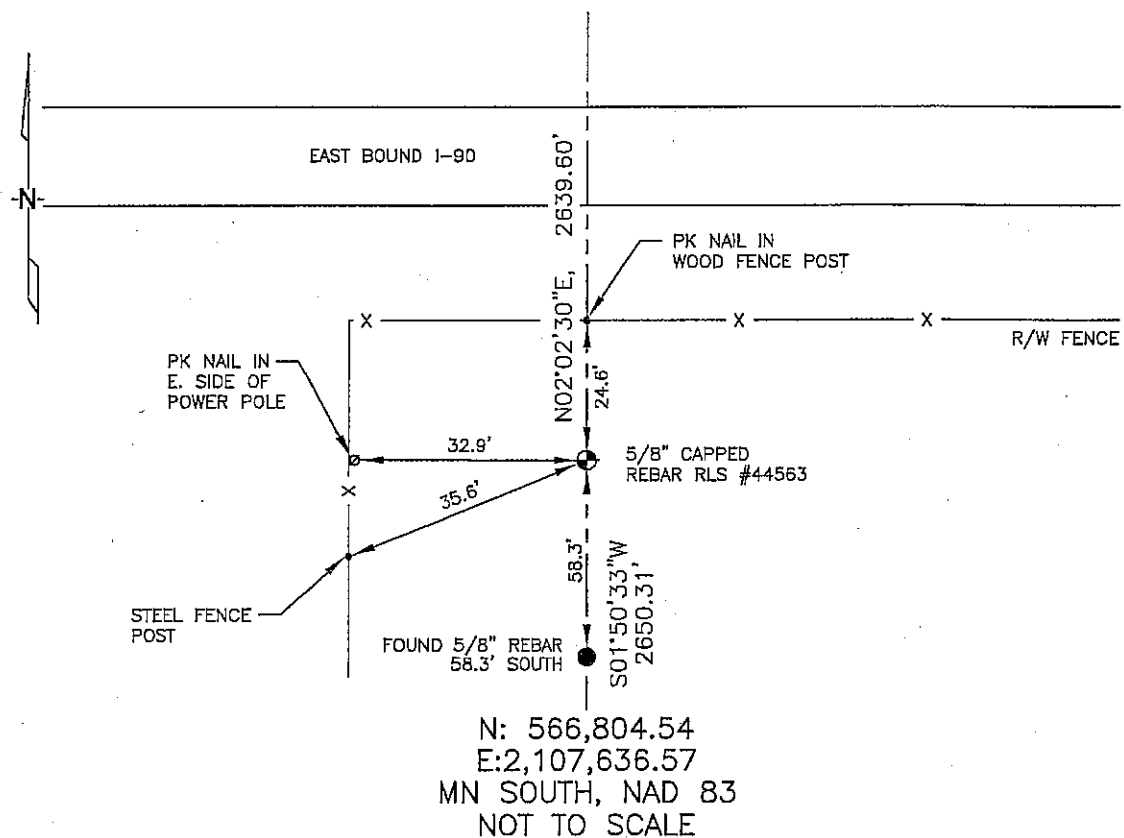
☒ On 2/28/2006 found 5/8" REBAR, 58.3' SOUTH FROM 1/4

CORNER; REJECTED THIS LOCATION.

☒ left monument as found, ☐ lowered monument, ☐ removed monument (explain)

☒ On 2/28/2006 set A 5/8" REBAR WITH CAP: RLS 44563.

Sketch of reference ties



Statement of evidence relative to this corner location is on back page

I hereby certify that this document and the data contained herein was prepared by me or under my direct supervision.

Thomas V. Zeff 6/29/06
 Thomas V. Zeff Date
 Registration No. 44563

☒ Land Surveyor, ☐ Professional Engineer

☐ County Surveyor, ☐ County Engineer

OFFICE OF THE COUNTY RECORDER

County of _____

I hereby certify that this document was filed in the Co. Records office at _____ M. on the day of _____ A.D., 20

County Recorder _____
 By _____, Deputy

DOCUMENT NO. _____

STATEMENT OF EVIDENCE:

EAST 1/4 CORNER, SECTION 14, T. 102 N., R. 43 W.,
NOBLES COUNTY, MINNESOTA

- 1869 R.H.L. Jewett, US. Deputy Surveyor, monumented corner.
- 1963 MN DOT R/W Map for I-90 calls for 1/4 corner to be at intersection of north & south road and east & west fence.
- 2/28/2006 Ulteig Engineers, Inc. Survey Crew, Dennis Lavallie Party Chief, found a 5/8" rebar 58.3' south from 1/4 corner position. Determined that found monument is a curve point of intersection (PI) of the I-90 service road and rejected it as the 1/4 corner. Reestablished said 1/4 corner to be in harmony with MN DOT R/W Plat for I-90.
Ties: N-24.6' to PK Nail in wood, fence post;
SW-35.6' to steel fence post;
W-32.9' to PK Nail in E side of wood, power pole;
N-2639.60' to NE corner, Section 14;
S-2650.31' to SE corner, Section 14.