

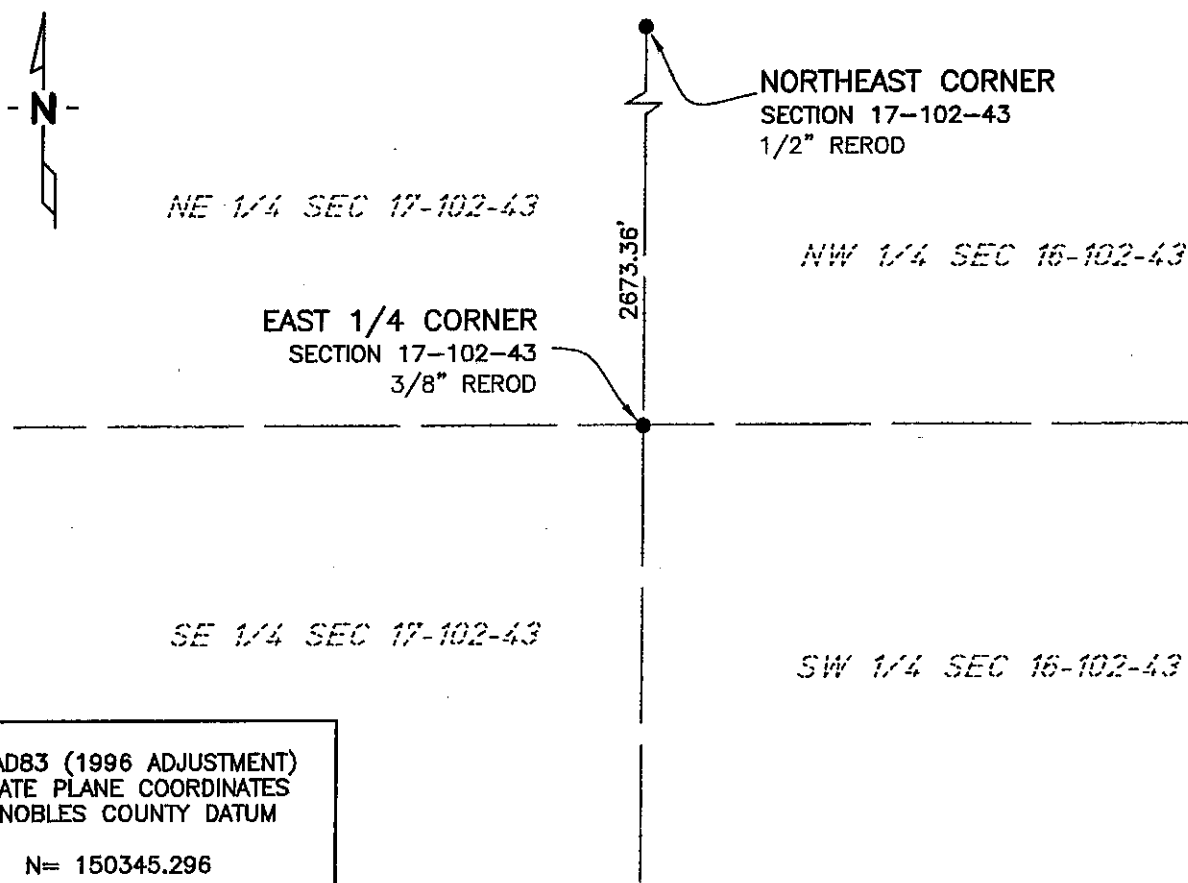
CERTIFICATE OF LOCATION OF GOVERNMENT CORNER

EAST QUARTER Corner of Section 17, Township 102 N, Range 43 W, 5th P.M.
STATE OF MINNESOTA, County of NOBLES

At the corner location shown on the sketch:

- ☒ On 11/12/02 found a 3/8" REROD
DATE
- ☒ left monument as found, ☐ lowered monument, ☐ removed monument (explain)
- ☐ On _____ placed a _____
DATE

SKETCH OF REFERENCE TIES



NAD83 (1996 ADJUSTMENT)
STATE PLANE COORDINATES
NOBLES COUNTY DATUM

N= 150345.296
E= 483243.465

BOOK: NOBLES CO. PG. 11
I:\NOBLES\CERTIFICATES\E17-102-43

Statement of evidence relative to this corner location is on back of page.

I hereby certify that this document and the data contained herein was prepared by me or under my direct supervision.

Janele Fowlds
JANELE FOWLDS

10/4/05
DATE

Registration No. 26748

- ☒ Land surveyor, ☐ Professional Engineer
☐ County Surveyor, ☐ County Engineer

OFFICE OF THE COUNTY RECORDER

County of _____

I hereby certify that this document was filed in the Co. Recorders office at _____ M. on the _____ day of _____ A.D., 19____

County Recorder _____

By _____, Deputy

DOCUMENT NO. _____

Statement of Evidence

East Quarter Corner Section 17, Township 102 North, Range 43 West

According to the Original Survey notes located in the Secretary of States Office, the East Quarter of Section 17 was established as follows: North between Sections 16 & 17, Variance 11 degrees 50 minutes, at 40.00 chains set a post in mound with pits for the Quarter Section Corner.

- 1962 Nobles County Highway Department records show that a Registered Land Surveyor reestablished the corner, and set an iron pin. No mention of how the corner was reestablished.
- 1964 Nobles County Highway Department records show an iron pin, with ties as follows:
Nail & Disc in power pole – East 49.48’
Top of steel fence post – Southeast 55.38’
Nail & Disc in telephone pedestal – Northwest 59.45’
- 2002 On November 12, Bolton & Menk, Inc. found a 3/8” Rerod 0.1’ below the surface, in bridge approach 25’ above the original ground.