

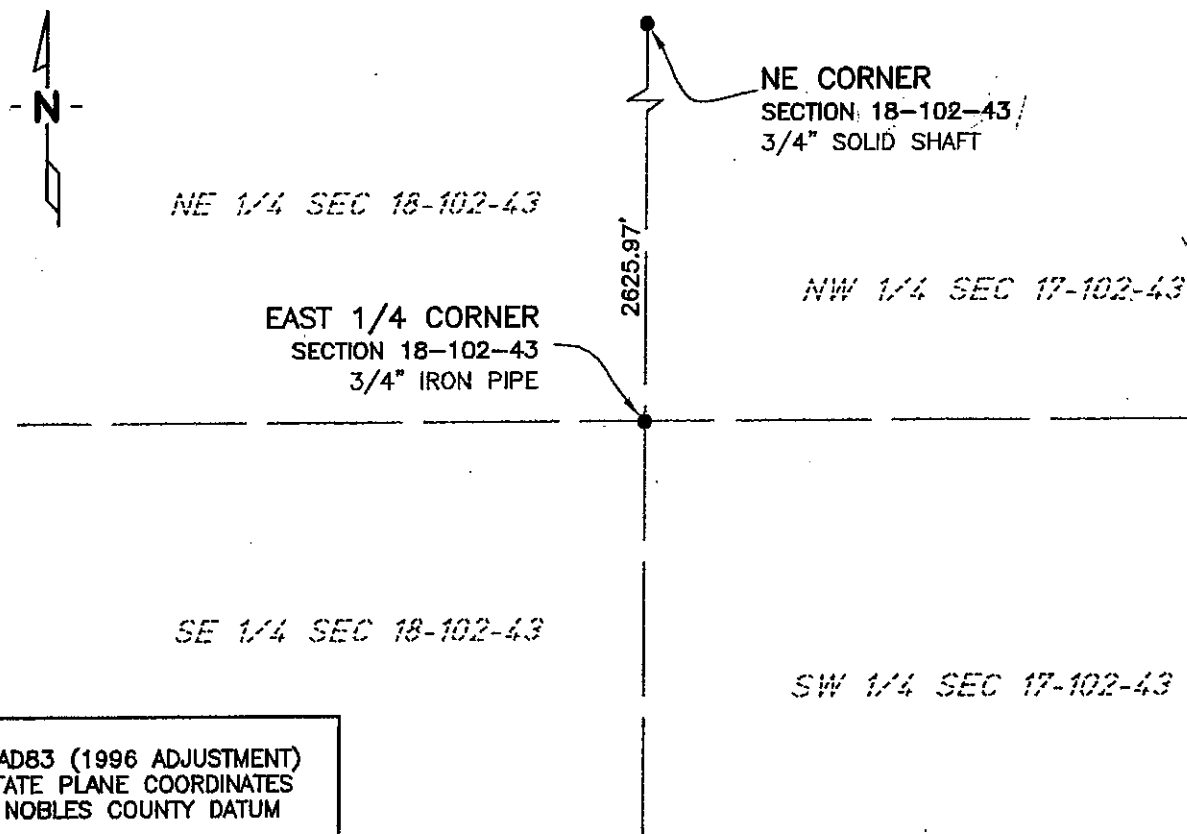
CERTIFICATE OF LOCATION OF GOVERNMENT CORNER

EAST QUARTER Corner of Section 18, Township 102 N, Range 43 W, 5th P.M.
STATE OF MINNESOTA, County of NOBLES

At the corner location shown on the sketch:

- ☒ On 11/08/02 found a 30 PENNY NAIL AT SURFACE, AND A 1 FOOT LONG
DATE
BRIDGE SPIKE 2.3 FEET BELOW THE SURFACE
- ☐ left monument as found, ☐ lowered monument, ☒ removed monument (explain)
- ☒ On 11/08/02 placed a 3/4" IRON PIPE ON TOP OF BRIDGE SPIKE
DATE

SKETCH OF REFERENCE TIES



NAD83 (1996 ADJUSTMENT)
STATE PLANE COORDINATES
NOBLES COUNTY DATUM

N= 150372.009
E= 477940.349

BOOK: NOBLES CO. PG. B
I:\NOBLES\CERTIFICATES\E18-102-43

Statement of evidence relative to this corner location is on back of page.

I hereby certify that this document and the data contained herein was prepared by me or under my direct supervision.

Janele Fowlds
JANELE FOWLDS

10/4/05
DATE

Registration No. 26748

- ☒ Land surveyor, ☐ Professional Engineer
☐ County Surveyor, ☐ County Engineer

OFFICE OF THE COUNTY RECORDER

County of _____

I hereby certify that this document was filed in the Co. Recorders office at ____M. on the _____ day of _____ A.D., 19____

County Recorder _____

By _____, Deputy

DOCUMENT NO. _____

Statement of Evidence

East Quarter Corner Section 18, Township 102 North, Range 43 West

According to the Original Survey notes located in the Secretary of States Office, the East Quarter of Section 18 was established as follows: North between Sections 17 & 18, Variance 11 degrees 45 minutes, at 40.00 chains set a post in mound with pits for the Quarter Section Corner.

1917 Nobles County Highway Department records show a stake.

2002 On November 8, Bolton & Menk, Inc. found a 30-Penny Nail at surface and a 1.0' long Bridge Spike 2.3' below the surface. Bolton & Menk, Inc. set a ¾" X 24" Iron Pipe on top of Bridge Spike.

The evidence is not conclusive as to the true corner location, however the occupational and collateral evidence suggest that this is a reasonable location as to the corner. Additional information regarding the preparation of this certificate can be obtained by contacting: Bolton & Menk, Inc., Mankato, MN.