

# CERTIFICATE OF LOCATION OF GOVERNMENT CORNER

EAST QUARTER Corner of Section 7, Township 102 N, Range 43 W, 5th P.M.  
STATE OF MINNESOTA, County of NOBLES

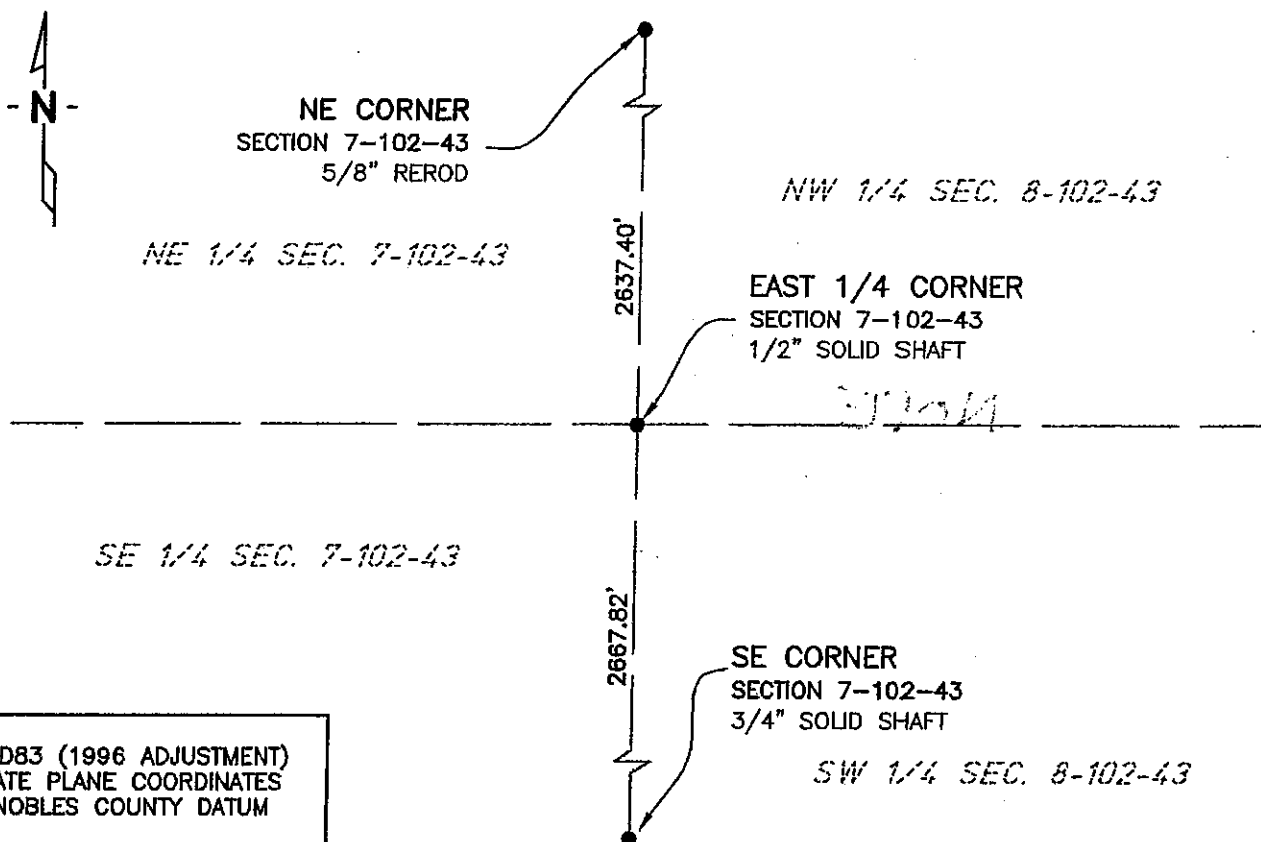
At the corner location shown on the sketch:

☒ On 11/08/02 found a 1/2" SOLID SHAFT  
DATE

☒ left monument as found, ☐ lowered monument, ☐ removed monument (explain)

☐ On \_\_\_\_\_ placed a \_\_\_\_\_  
DATE

## SKETCH OF REFERENCE TIES



NAD83 (1996 ADJUSTMENT)  
STATE PLANE COORDINATES  
NOBLES COUNTY DATUM

N= 155665.666  
E= 477977.404

BOOK: NOBLES CO. PG. 6  
I:\NOBLES\CERTIFICATES\E7-102-43

Statement of evidence relative to this corner location is on back of page.

I hereby certify that this document and the data contained herein was prepared by me or under my direct supervision.

Janele Fowlds  
JANELE FOWLDS

10/4/05  
DATE

Registration No. 26748

☒ Land surveyor, ☐ Professional Engineer

☐ County Surveyor, ☐ County Engineer

## OFFICE OF THE COUNTY RECORDER

County of \_\_\_\_\_

I hereby certify that this document was filed in the Co. Recorders office at \_\_\_\_\_ M. on the \_\_\_\_\_ day of \_\_\_\_\_ A.D., 19\_\_\_\_

County Recorder \_\_\_\_\_

By \_\_\_\_\_, Deputy

DOCUMENT NO. \_\_\_\_\_

## Statement of Evidence

### East Quarter Corner Section 7, Township 102 North, Range 43 West

According to the Original Survey notes located in the Secretary of States Office, the East Quarter Corner of Section 7 was established as follows: North between Sections 7 & 8, Variance 11 degrees 30 minutes, at 40.00 chains set a post in mound with pits for the Quarter Section Corner.

- 1930            Nobles County Highway Department records show an iron pin.
- 1961            Nobles County Highway Department records show an iron pin.
- 1961            Nobles County Highway Department records show that a wood stake was placed with the following ties:  
                    Nail & Disc in Power Pole – Northeast 32.95'  
                    Nail & Disc in Power Pole – Southeast 39.98'  
                    Nail & Disc in Power Pole – West 35.65'
- 2002            On November 8, Bolton & Menk, Inc. found a ½" Solid Shaft 1.2' below the surface in the centerline of a township road, and a fence line running East and West.

The evidence is not conclusive as to the true corner location, however the occupational and collateral evidence suggest that this is a reasonable location as to the corner. Additional information regarding the preparation of this certificate can be obtained by contacting: Bolton & Menk, Inc., Mankato, MN.