

CERTIFICATE OF LOCATION OF GOVERNMENT CORNER

EAST 1/4 Corner of Section 16, Township 102N, Range 43W, 5TH P.M.

STATE OF MINNESOTA, County of NOBLES

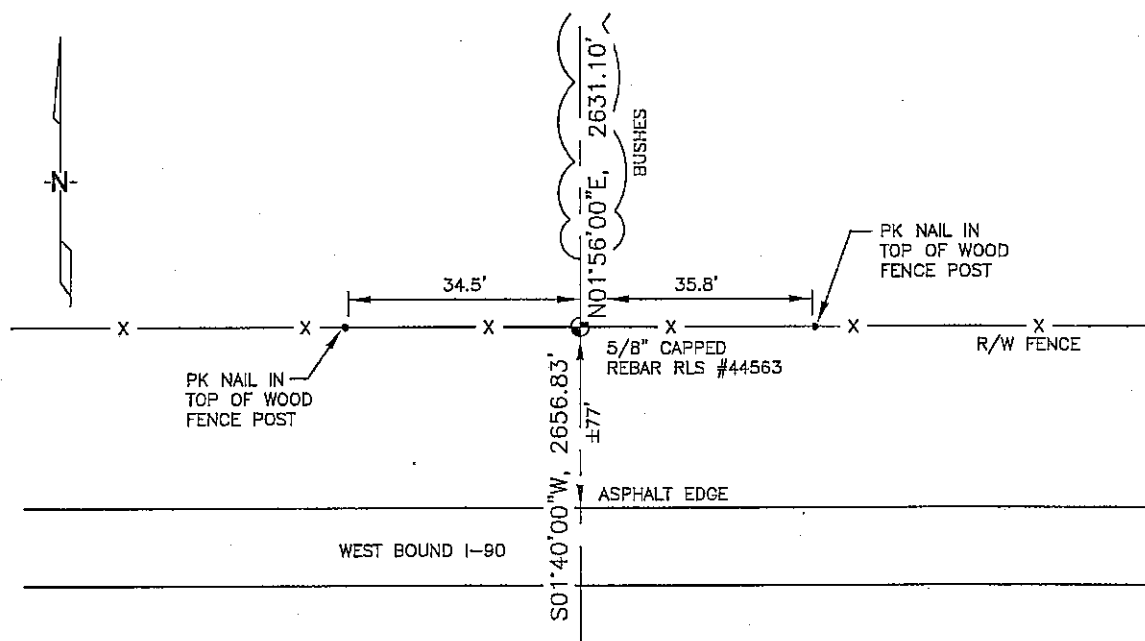
At the corner location shown on the sketch :

☐ On _____ found _____

☐ left monument as found, ☐ lowered monument, ☐ removed monument (explain)

☒ On 2/28/2006 set A 5/8" REBAR WITH CAP: RLS 44563.

Sketch of reference ties



N: 567,077.92
E: 2,097,035.90
MN SOUTH, NAD 83
NOT TO SCALE

Statement of evidence relative to this corner location is on back page

I hereby certify that this document and the data contained herein was prepared by me or under my direct supervision.

Thomas V. Zeff 6/29/06
Thomas V. Zeff Date
Registration No. 44563

☒ Land Surveyor, ☐ Professional Engineer

☐ County Surveyor, ☐ County Engineer

OFFICE OF THE COUNTY RECORDER

County of _____

I hereby certify that this document was filed in the Co. Recorders office at _____ M. on the _____ day of _____ A.D., 20____

County Recorder _____

By _____, Deputy

DOCUMENT NO. _____

STATEMENT OF EVIDENCE:

EAST 1/4 CORNER, SECTION 16, T. 102 N., R. 43 W.,
NOBLES COUNTY, MINNESOTA

- 1869 R.H.L. Jewett, US. Deputy Surveyor, monumented corner.
- 1963 MN DOT R/W Map for I-90, calls for corner at intersection of fences, going north, south & west.
- 2/28/2006 Ulteig Engineers, Inc. Survey Crew, Dennis Lavallie Party Chief, found nothing. Set a 5/8" rebar with cap: RLS 44563 to be harmony with MN DOT R/W Plats for I-90.
Ties: S-77'± to north edge of west bound lane of I-90;
E-35.8' to PK Nail in top, wood, fence post;
W-34.5' to PK Nail in top, wood, fence post;
N-2631.10' to NE corner, Section 16;
S-2656.83' to SE corner, Section 16.