

CERTIFICATE OF LOCATION OF GOVERNMENT CORNER

NORTH QUARTER Corner of Section 10, Township 102 N, Range 43 W, 5th P.M.

STATE OF MINNESOTA, County of NOBLES

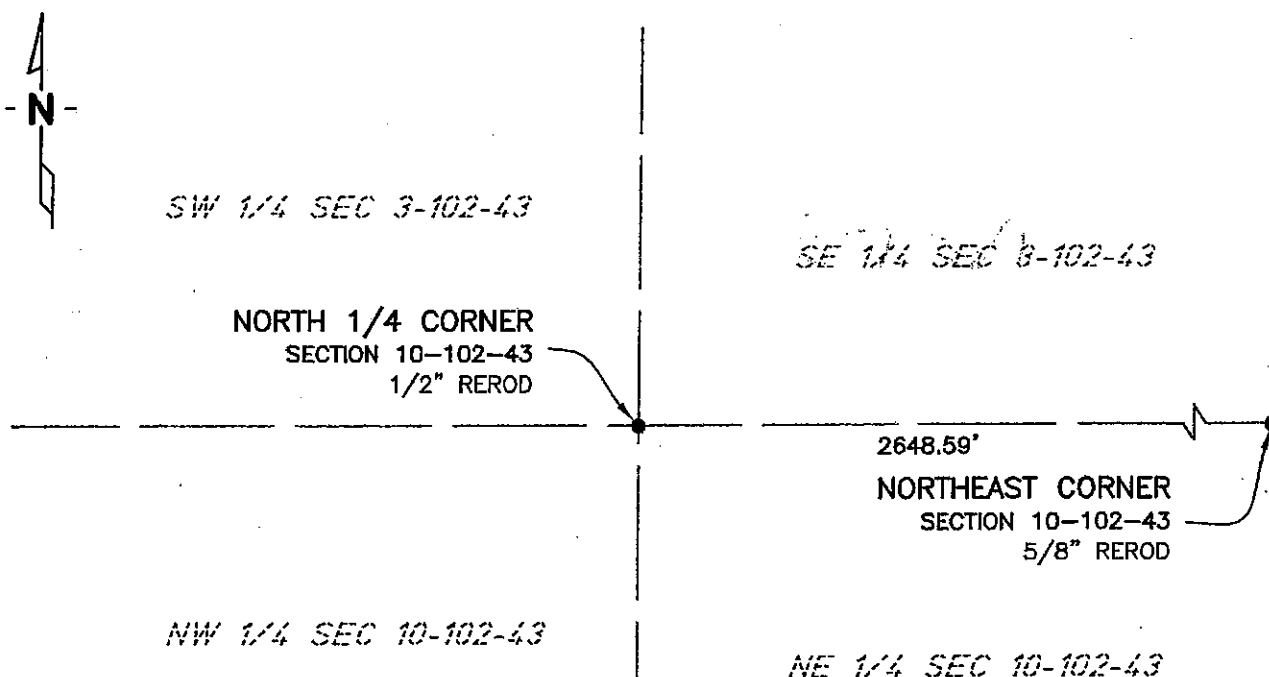
At the corner location shown on the sketch:

☒ On 11/13/02 found a 1/2" REROD
DATE

☒ left monument as found, ☐ lowered monument, ☐ removed monument (explain)

☐ On _____ placed a _____
DATE

SKETCH OF REFERENCE TIES



NAD83 (1996 ADJUSTMENT)
STATE PLANE COORDINATES
NOBLES COUNTY DATUM

N= 158234.868
E= 491274.989

BOOK: NOBLES CO. PG. 28
I:\NOBLES\CERTIFICATES\N10-102-43

Statement of evidence relative to this corner location is on back of page.

I hereby certify that this document and the data contained herein was prepared by me or under my direct supervision.

Janele Fowlds
JANELE FOWLDS

10/4/05
DATE

Registration No. 26748

☒ Land surveyor, ☐ Professional Engineer

☐ County Surveyor, ☐ County Engineer

OFFICE OF THE COUNTY RECORDER

County of _____

I hereby certify that this document was filed in the Co. Recorders office at _____ M. on the _____ day of _____ A.D., 19____

County Recorder _____

By _____, Deputy

DOCUMENT NO. _____

Statement of Evidence

North Quarter Corner Section 10, Township 102 North, Range 43 West

According to the Original Survey notes located in the Secretary of States Office, the North Quarter of Section 10 was established as follows: East on a random line between Sections 3 & 10, Variance 12 degrees, at 40.00 chains set temporary quarter post, at 80.02 chains intersect North and South line 15 links North of the corner to Sections 2, 3, 10, & 11. North 89 degrees 54 minutes West, between Sections 3 & 10, Variance 12 degrees, at 40.01 chains set post in mound with pits for the Quarter Section Corner.

- 1892 Nobles County Highway Department records show a stone monument.
- 1920 Nobles County Highway Department records show a stone monument.
- 2002 On November 13, Bolton & Menk, Inc. found a ½" Rerod 0.9' below the surface in a township road.

The evidence is not conclusive as to the true corner location, however the occupational and collateral evidence suggest that this is a reasonable location as to the corner. Additional information regarding the preparation of this certificate can be obtained by contacting: Bolton & Menk, Inc., Mankato, MN.