

CERTIFICATE OF LOCATION OF GOVERNMENT CORNER

NORTH QUARTER Corner of Section 14, Township 102 N, Range 43 W, 5th P.M.

STATE OF MINNESOTA, County of NOBLES

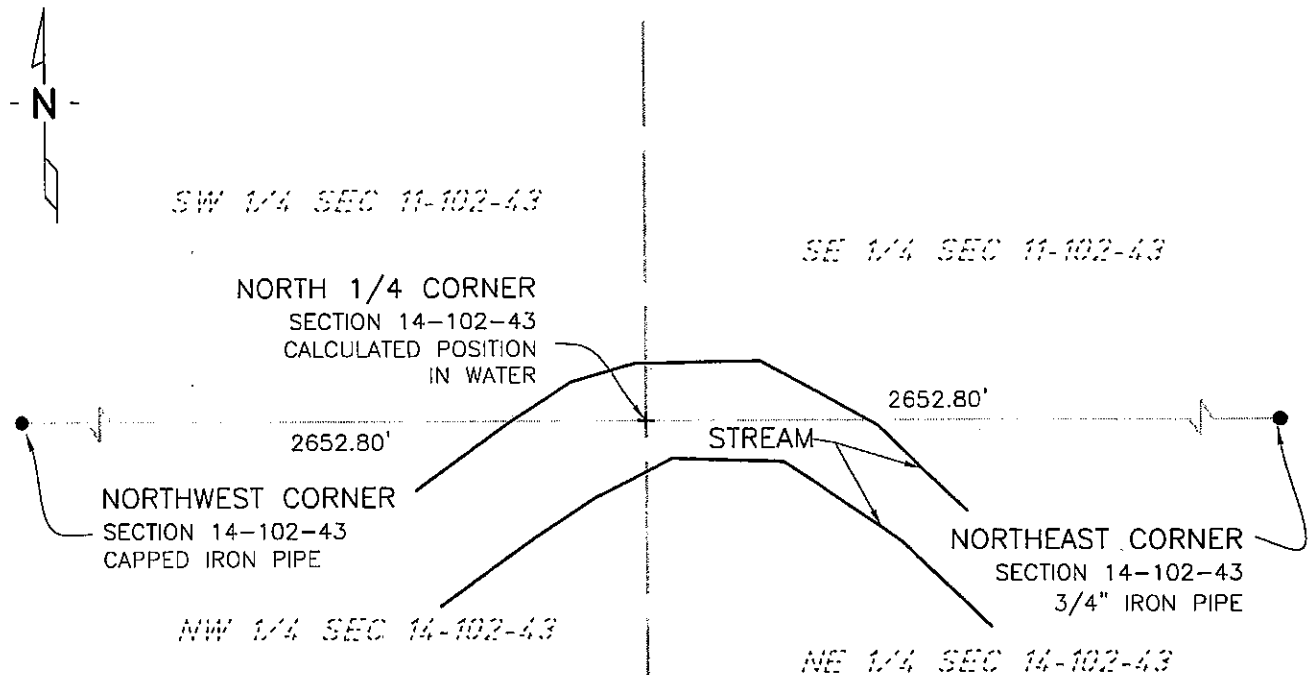
At the corner location shown on the sketch:

☒ On 11/08/02 found a NOTHING
DATE

☐ left monument as found, ☐ lowered monument, ☐ removed monument (explain)

☒ On 12/09/02 placed a NOTHING - CALCULATED POSITION FELL WITHIN STREAM
DATE

SKETCH OF REFERENCE TIES



NAD83 (1996 ADJUSTMENT)
STATE PLANE COORDINATES
NOBLES COUNTY DATUM

N= 152922.522

E= 496556.322

BOOK: NOBLES CO. PG. 2
I:\NOBLS\CERTIFICATES\N14-102-43

Statement of evidence relative to this corner location is on back of page.

I hereby certify that this document and the data contained herein was prepared by me or under my direct supervision.

Janele Fowlds
JANELE FOWLDS

4-24-06
DATE

Registration No. 26748

☒ Land surveyor, ☐ Professional Engineer

☐ County Surveyor, ☐ County Engineer

OFFICE OF THE COUNTY RECORDER

County of _____

I hereby certify that this document was filed in the Co. Recorders office at ____M. on the _____ day of _____ A.D., 19____

County Recorder _____

By _____, Deputy

DOCUMENT NO. _____

Statement of Evidence

North Quarter Corner Section 14, Township 102 North, Range 43 West

According to the Original Survey notes located in the Secretary of States Office, the North Quarter of Section 14 was established as follows: East on a random line between Sections 11 & 14, Variance 11 degrees, at 40.00 chains point for quarter corner is in the river, at 80.06 chains intersect North South line 20 links South of the corner to Sections 11, 12, 13, & 14. South 89 degrees 52 minutes West, between Sections 11 & 14, Variance 11 degrees, at 40.03 chains point for quarter corner in river. Set post in mound with pits for witness corner, 4.00 chains West of true corner.

- 2002 On November 8, Bolton & Menk, Inc. searched for the corner and found nothing. Bolton & Menk, Inc. calculated a position half way and on line between the Northeast and the Northwest Section Corners.
- 2006 On February 27, Bolton & Menk, Inc., Fairmont, was not able to place at monument at the calculated corner because it fell in a stream.