

CERTIFICATE OF LOCATION OF GOVERNMENT CORNER

NORTH QUARTER Corner of Section 15, Township 102 N, Range 43 W, 5th P.M.

STATE OF MINNESOTA, County of NOBLES

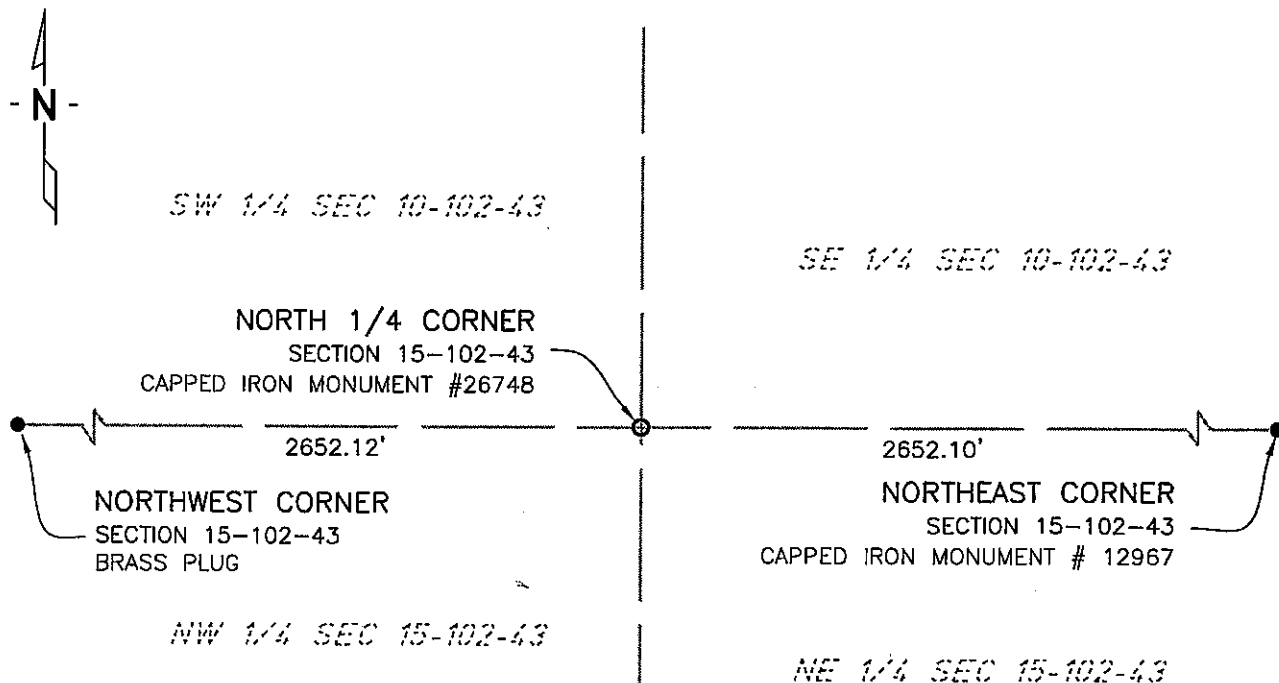
At the corner location shown on the sketch:

☒ On 01/03/03 found a IRON MONUMENT #12967
DATE

☒ left monument as found, ☐ lowered monument, ☐ removed monument (explain)

☒ On 6/16/05 placed a 3/4" X 20" IRON PIPE MARKED WITH REGISTRATION
DATE
#26748 0.2' BELOW GRAVEL SHOULDER SURFACE

SKETCH OF REFERENCE TIES



NAD83 (1996 ADJUSTMENT)
STATE PLANE COORDINATES
NOBLES COUNTY DATUM

N= 152928.529

E= 491251.469

BOOK: NOBLES CO. PG. 2
I:\NOBLES\CERTIFICATES\N15-102-43

Statement of evidence relative to this corner location is on back of page.

I hereby certify that this document and the data contained herein was prepared by me or under my direct supervision.

Janele Fowlds
JANELE FOWLDS

10/4/05
DATE

Registration No. 26748

☒ Land surveyor, ☐ Professional Engineer

☐ County Surveyor, ☐ County Engineer

OFFICE OF THE COUNTY RECORDER

County of _____

I hereby certify that this document was filed in the Co. Recorders office at ____M. on the _____ day of _____ A.D., 19____

County Recorder _____

By _____, Deputy

DOCUMENT NO. _____

Statement of Evidence

North Quarter Corner Section 15, Township 102 North, Range 43 West

According to the Original Survey notes located in the Secretary of States Office, the North Quarter of Section 15 was established as follows: East on a random line between Sections 10 & 15, Variance 11 degrees 45 minutes, at 40.00 chains set temporary quarter post, at 80.32 chains intersect North South line 34 links South of the corner to Sections 10, 11, 14, & 15. South 89 degrees 46 minutes West, between Sections 10 & 15, Variance 11 degrees 45 minutes, at 40.16 chains set post in mound with pits for the Quarter Section Corner.

- 1892 Nobles County Highway Department records show that a stone monument was set. No mention of how stone was set.
- 1981 Gary D. Martin set a Capped Iron Monument #12967 half way and on line between the Northeast and the Northwest Corners of Section 15.
- 2002 On January 3, Bolton & Menk, Inc. found a Capped Iron Monument #12967.
- 2005 On June 16, Bolton & Menk, Inc. set a ¾" x 20" iron pipe monument with registration #26748, 0.2' below gravel shoulder of County Highway 35, in the position of previously found iron monument. Previous monument was destroyed during the reconstruction of highway.