

# CERTIFICATE OF LOCATION OF GOVERNMENT CORNER

NORTH QUARTER Corner of Section 16, Township 102 N, Range 43 W, 5th P.M.

STATE OF MINNESOTA, County of NOBLES

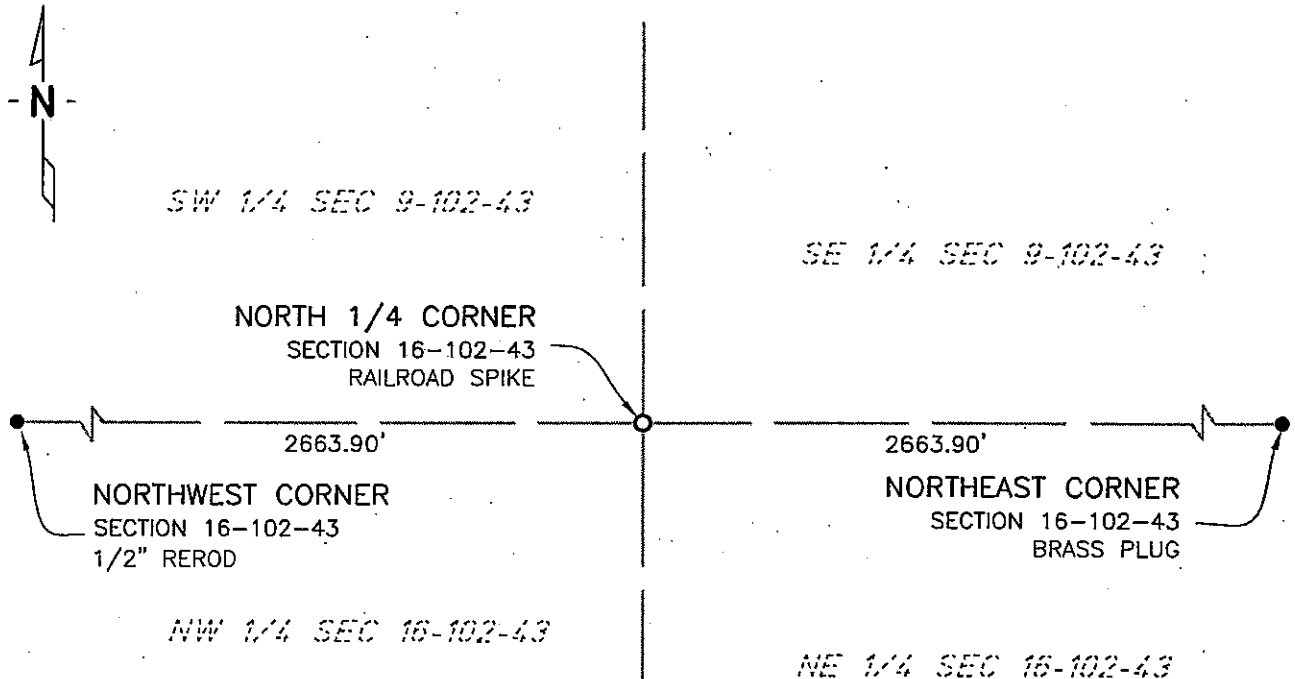
At the corner location shown on the sketch:

☒ On 11/08/02 found a NOTHING  
DATE

☐ left monument as found, ☐ lowered monument, ☐ removed monument (explain)

☒ On 6/16/05 placed a RAILROAD SPIKE  
DATE

## SKETCH OF REFERENCE TIES



NAD83 (1996 ADJUSTMENT)  
STATE PLANE COORDINATES  
NOBLES COUNTY DATUM

N= 152969.732  
E= 485935.900

BOOK: NOBLES CO. PG. 1  
I:\NOBLES\CERTIFICATES\N16-102-43

Statement of evidence relative to this corner location is on back of page.

I hereby certify that this document and the data contained herein was prepared by me or under my direct supervision.

Janele Fowlds  
JANELE FOWLDS

10/4/05  
DATE

Registration No. 26748

☒ Land surveyor, ☐ Professional Engineer

☐ County Surveyor, ☐ County Engineer

## OFFICE OF THE COUNTY RECORDER

County of \_\_\_\_\_

I hereby certify that this document was filed in the Co. Recorders office at \_\_\_\_M. on the \_\_\_\_\_ day of \_\_\_\_\_ A.D., 19\_\_

County Recorder \_\_\_\_\_

By \_\_\_\_\_, Deputy

DOCUMENT NO. \_\_\_\_\_

## Statement of Evidence

### North Quarter Corner Section 16, Township 102 North, Range 43 West

According to the Original Survey notes located in the Secretary of States Office, the North Quarter of Section 16 was established as follows: East on a random line between Sections 9 & 16, Variance 11 degrees 45 minutes, at 40.00 chains set temporary quarter post, at 80.52 chains intersect North South line 35 links South of the corner to Sections 9, 10, 15, & 16. South 89 degrees 45 minutes West, between Sections 9 & 16, Variance 11 degrees 45 minutes, at 40.26 chains set post in mound with pits for the Quarter Section Corner.

- 1959            Nobles County Highway Department records show an iron pin with ties as follows:  
                    Fence Post – Northeast 45.09'
- 2002            On November 8, Bolton & Menk, Inc. searched for the corner and found nothing. Bolton & Menk, Inc. calculated a position half way and on line between the Northeast and the Northwest Corners of the Section.
- 2005            On June 16, Bolton & Menk, Inc. set a railroad spike, in the bituminous surface, at the previously calculated position.