

CERTIFICATE OF LOCATION OF GOVERNMENT CORNER

NORTH QUARTER Corner of Section 18, Township 102 N, Range 43 W, 5th P.M.
STATE OF MINNESOTA, County of NOBLES

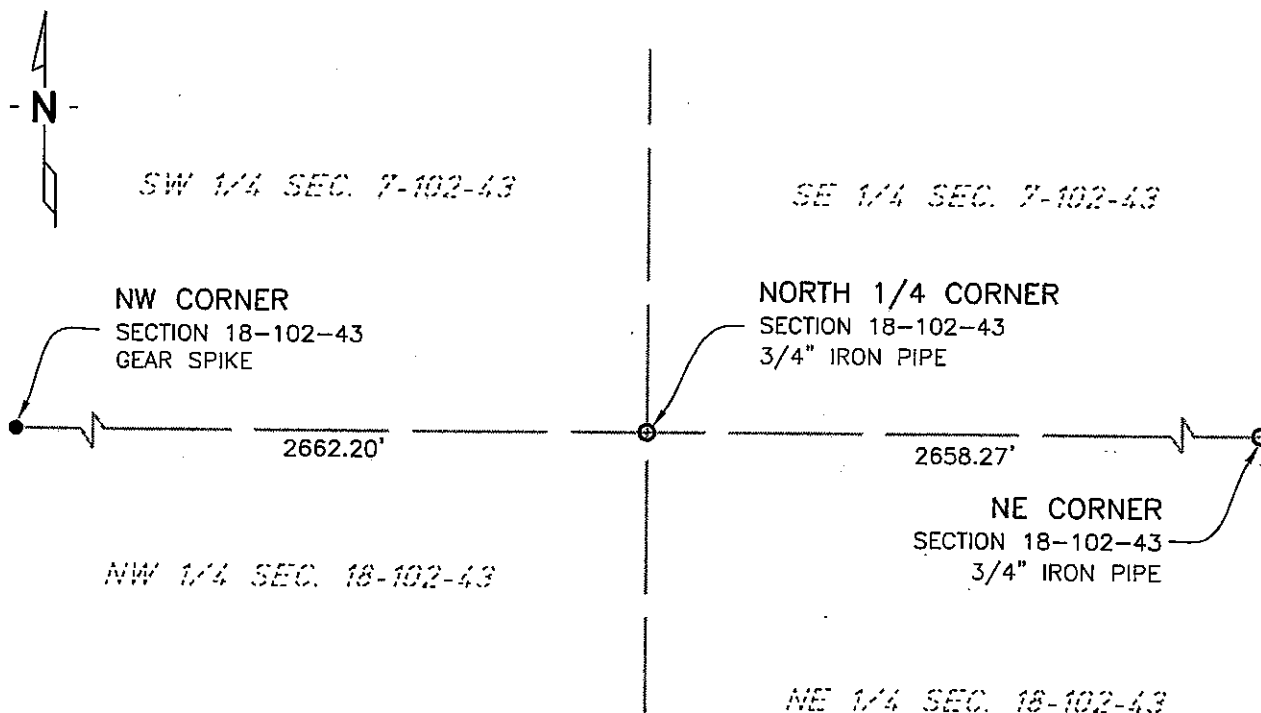
At the corner location shown on the sketch:

☒ On 11/08/02 found a 3/4" SOLID SHAFT
DATE

☒ left monument as found, ☐ lowered monument, ☐ removed monument (explain)

☒ On _____ placed a 3/4" X 20" IRON PIPE MARKED WITH REGISTRATION
DATE
#26748 0.05 BELOW BIT SURFACE

SKETCH OF REFERENCE TIES



NAD83 (1996 ADJUSTMENT)
STATE PLANE COORDINATES
NOBLES COUNTY DATUM

N= 152980.510
E= 475296.947

BOOK: NOBLES CO. PG. 32
I:\NOBLS\CERTIFICATES\N18-102-43

Statement of evidence relative to this corner location is on back of page.

I hereby certify that this document and the data contained herein was prepared by me or under my direct supervision.

Janele Fowlds
JANELE FOWLDS

10/4/05
DATE

Registration No. 26748

☒ Land surveyor, ☐ Professional Engineer
☐ County Surveyor, ☐ County Engineer

OFFICE OF THE COUNTY RECORDER

County of _____

I hereby certify that this document was filed in the Co. Recorders office at ____ M. on the _____ day of _____ A.D., 19____

County Recorder _____

By _____, Deputy

DOCUMENT NO. _____

Statement of Evidence

North Quarter Corner Section 18, Township 102 North, Range 43 West

According to the Original Survey notes located in the Secretary of States Office, the North Quarter of Section 18 was established as follows: West on a random line between Sections 7 & 18, Variance 12 degrees, at 40.00 chains set temporary quarter post, at 80.26 chains intersect Range Line 127 links North of the corner to Sections 7, 12, 13, & 18. North 89 degrees 05 minutes East, between Sections 7 & 18, Variance 12 degrees, at 40.26 chains set post in mound with pits for the Quarter Section Corner.

- | | |
|--------|---|
| 1917 | Nobles County Highway Department records show a stake. |
| 1930's | State of Minnesota Department of Highways, Right of Way Map, Nobles County, S.P. 5301 and S.P 5302 show the corner being 15.6' North of the centerline of highway and a fence running North-South. |
| 1959 | Nobles County Highway Department records show the corner was reestablished and an iron pin was set. No mention of how the corner was reestablished. |
| 1973 | Nobles County Highway Department records show an iron pin, with ties as follows: Nail & Disc in corner fence post – North 34.75' M.H.D Disc in fence post – Northwest 36.20' Nail & Disc in corner fence post – Northeast 85.45' |
| 2002 | On November 8, Bolton & Menk, Inc. found a ¾" Solid Shaft 0.4 feet below the surface in gravel shoulder 15.5' North of centerline of County Road. |
| 2005 | On June 16, Bolton & Menk, Inc. set a ¾" x 20" iron pipe monument, 0.05' below bituminous surface, at the previously located shaft. The shaft was destroyed due to reconstruction of highway. |