

CERTIFICATE OF LOCATION OF GOVERNMENT CORNER

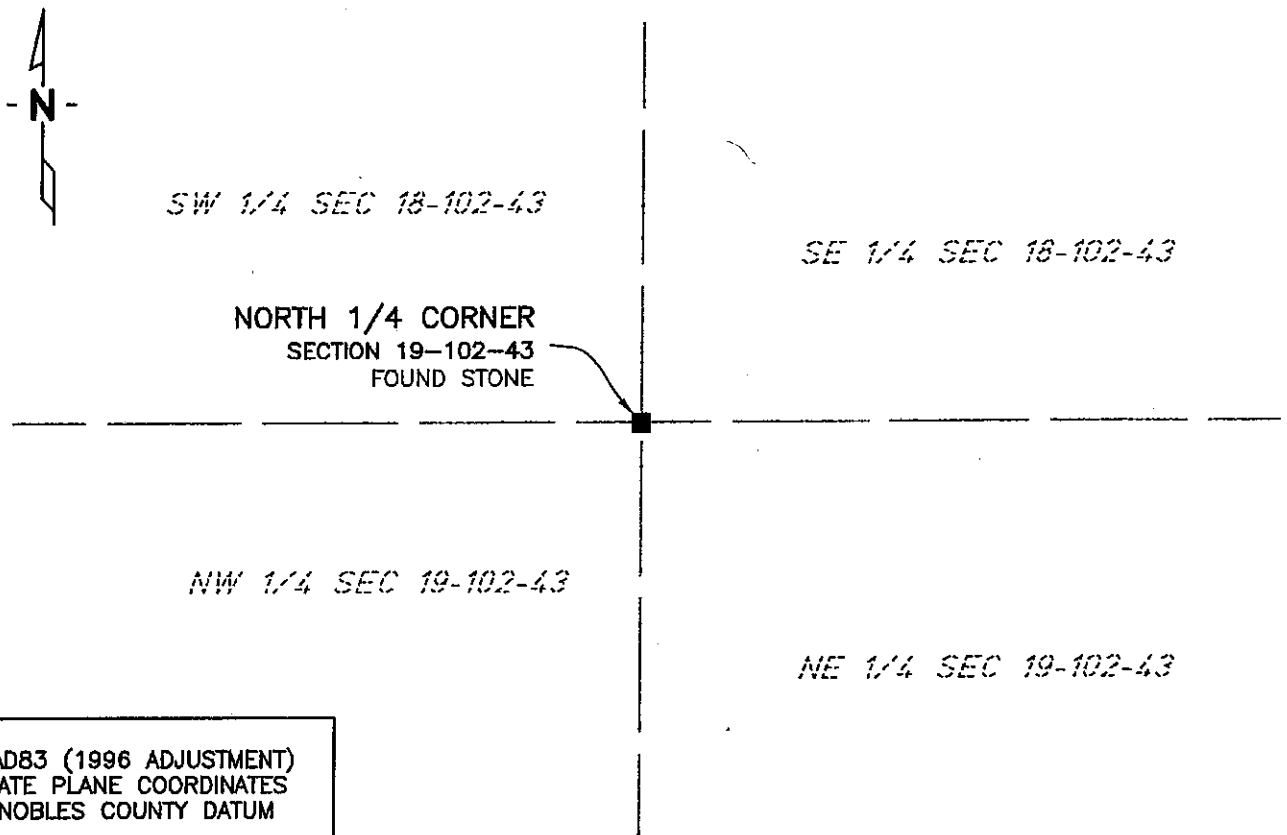
NORTH QUARTER Corner of Section 19, Township 102 N, Range 43 W, 5th P.M.

STATE OF MINNESOTA, County of NOBLES

At the corner location shown on the sketch:

- ☒ On 11/12/02 found a BENT SOLID SHAFT OVER A STONE MONUMENT. STONE
DATE
IS 20" BELOW THE SURFACE
- ☐ left monument as found, ☐ lowered monument, ☒ removed monument (explain)
- ☒ On 11/12/02 Replaced BENT SHAFT WITH A 3/4" IRON PIPE
DATE

SKETCH OF REFERENCE TIES



NAD83 (1996 ADJUSTMENT)
 STATE PLANE COORDINATES
 NOBLES COUNTY DATUM

N= 147723.902
 E= 475271.937

BOOK: NOBLES CO. PG. 12
 I:\NOBLES\CERTIFICATES\N19-102-44

Statement of evidence relative to this corner location is on back of page.

I hereby certify that this document and the data contained herein was prepared by me or under my direct supervision.

Janele Fowlds
 JANELE FOWLDS

3-4-04
 DATE

Registration No. 26748

- ☒ Land surveyor, ☐ Professional Engineer
☐ County Surveyor, ☐ County Engineer

OFFICE OF THE COUNTY RECORDER

County of _____

I hereby certify that this document was filed in the Co. Recorders office at ____M. on the _____ day of _____ A.D., 19____

County Recorder _____

By _____, Deputy

DOCUMENT NO. _____

Statement of Evidence

North Quarter Corner Section 19, Township 102 North, Range 43 West

According to the Original Survey notes located in the Secretary of States Office, the North Quarter of Section 19 was established as follows: West on a random line between Sections 18 & 19, Variance 11 degrees 45 minutes, at 40.00 chains set temporary quarter post, at 80.45 chains intersect Range Line 70 links North of the corner to Sections 13, 18, 19, & 24. North 89 degrees 30 minutes East, between Sections 18 & 19, Variance 11 degrees 45 minutes, at 40.45 chains set post in mound with pits for the Quarter Section Corner.

- 1900 Nobles County Highway Department records show a stone monument.
- 1959 Nobles County Highway Department records show a stone monument, and placed an iron pin, with ties as follows:
Telephone Pedestal – North-Northeast 32.24'
Fence Post – Northeast 59.78'
Fence Post – Southeast 56.65'
Fence Post – Southwest 38.07'
- 2002 On November 12, Bolton & Menk, Inc. found a Stone Monument 20" below the surface with a bent Solid Shaft on top of it. Bolton & Menk, Inc. replaced bent shaft with a ¾" iron pipe.