

CERTIFICATE OF LOCATION OF GOVERNMENT CORNER

NORTH QUARTER Corner of Section 21, Township 102 N, Range 43 W, 5th P.M.

STATE OF MINNESOTA, County of NOBLES

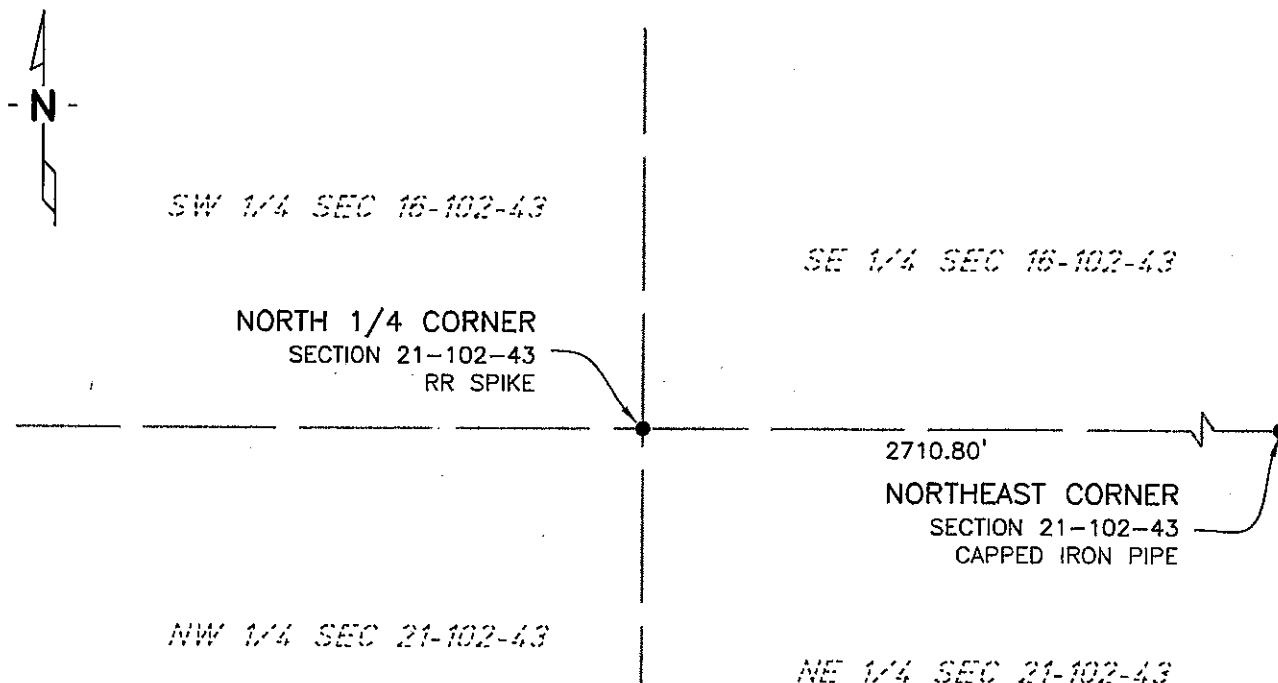
At the corner location shown on the sketch:

☒ On 11/12/02 found a RAILROAD SPIKE
DATE

☒ left monument as found, ☐ lowered monument, ☐ removed monument (explain)

☐ On _____ placed a _____
DATE

SKETCH OF REFERENCE TIES



NAD83 (1996 ADJUSTMENT)
STATE PLANE COORDINATES
NOBLES COUNTY DATUM

N= 147708.819

E= 485849.723

BOOK: NOBLES CO. PG. 14

I:\NOBLES\CERTIFICATES\N21-102-43

Statement of evidence relative to this corner location is on back of page.

I hereby certify that this document and the data contained herein was prepared by me or under my direct supervision.

Janele Fowlds
JANELE FOWLDS

10/4/05
DATE

Registration No. 26748

☒ Land surveyor, ☐ Professional Engineer

☐ County Surveyor, ☐ County Engineer

OFFICE OF THE COUNTY RECORDER

County of _____

I hereby certify that this document was filed in the Co. Recorders office at ____M. on the _____ day of _____ A.D., 19__

County Recorder _____

By _____, Deputy

DOCUMENT NO. _____

Statement of Evidence

North Quarter Corner Section 21, Township 102 North, Range 43 West

According to the Original Survey notes located in the Secretary of States Office, the North Quarter of Section 21 was established as follows: East on a random line between Sections 16 & 21, Variance 11 degrees 35 minutes, at 40.00 chains set temporary quarter post, at 80.72 chains intersect North South line 12 links South of the corner to Sections 15, 16, 21, & 22. South 89 degrees 55 minutes West, between Sections 16& 21 Variance 11 degrees 35 minutes, at 40.36 chains set post in mound with pits for the Quarter Section Corner.

1959 Nobles County Highway Department records show a stone monument, and placed an iron pin, with ties as follows:
Tree – Northwest 50.75'
Fence Post – Northeast 85.25'
Telephone Pedestal – Southeast 101.25'
Telephone Pedestal – Southwest 108.55'

2002 On November 12, Bolton & Menk, Inc. found a Railroad Spike 0.3' below the surface.

The evidence is not conclusive as to the true corner location, however the occupational and collateral evidence suggest that this is a reasonable location as to the corner. Additional information regarding the preparation of this certificate can be obtained by contacting: Bolton & Menk, Inc., Mankato, MN.