

CERTIFICATE OF LOCATION OF GOVERNMENT CORNER

NORTH QUARTER Corner of Section 24, Township 102 N, Range 43 W, 5th P.M.

STATE OF MINNESOTA, County of NOBLES

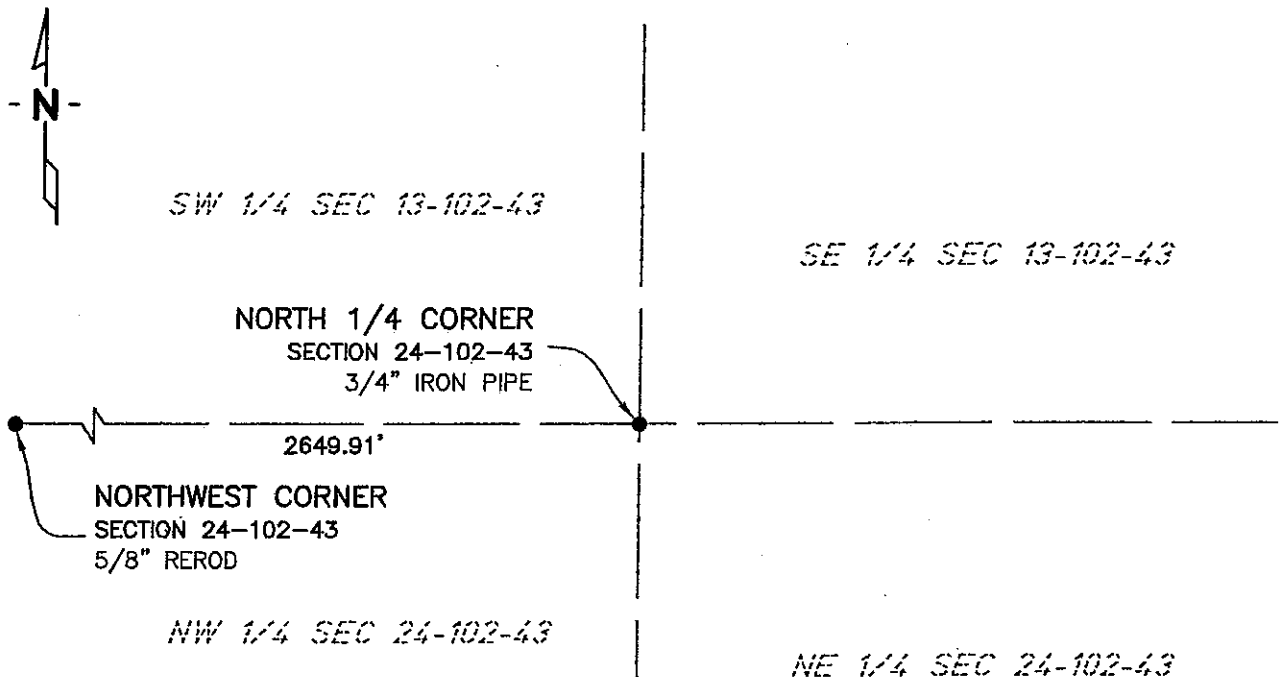
At the corner location shown on the sketch:

☒ On 11/12/02 found a 3/4" IRON PIPE
DATE

☒ left monument as found, ☐ lowered monument, ☐ removed monument (explain)

☐ On _____ placed a _____
DATE

SKETCH OF REFERENCE TIES



NAD83 (1996 ADJUSTMENT)
STATE PLANE COORDINATES
NOBLES COUNTY DATUM

N= 147644.740
E= 501805.736

BOOK: NOBLES CO. PG. 16
I:\NOBLES\CERTIFICATES\N24-102-43

Statement of evidence relative to this corner location is on back of page.

I hereby certify that this document and the data contained herein was prepared by me or under my direct supervision.

Jane Fowlds
JANELE FOWLDS

10/4/05
DATE

Registration No. 26748

☒ Land surveyor, ☐ Professional Engineer

☐ County Surveyor, ☐ County Engineer

OFFICE OF THE COUNTY RECORDER

County of _____

I hereby certify that this document was filed in the Co. Recorders office at _____ M. on the _____ day of _____ A.D., 19____

County Recorder _____

By _____, Deputy

DOCUMENT NO. _____

Statement of Evidence

North Quarter Corner Section 24, Township 102 North, Range 43 West

According to the Original Survey notes located in the Secretary of States Office, the North Quarter of Section 24 was established as follows: East on a random line between Sections 13 & 24, Variance 11 degrees 25 minutes, at 40.00 chains set temporary quarter post, at 80.38 chains intersect Range Line 52 links South of the corner to Sections 13, 18, 19, & 24. South 89 degrees 38 minutes West, between Sections 13 & 24 Variance 11 degrees 25 minutes, at 40.19 chains set post in mound with pits for the Quarter Section Corner.

- 1891 Nobles County Highway Department records show an iron pin.
- 1902 Nobles County Highway Department records show an iron pin.
- 1967 On July 7, Donald K. Wall states that this area had been disturbed due to recent sewer construction.
- 1992 On December 21, Madsen Surveying set a ¾" X 24" iron pipe at the surface of bituminous paving from previous survey information, ties as follows:
 - BC in Power Pole – North 34.70'
 - BC in Wood Corner Post – South-Southeast 32.93'
 - Steel Corner Post – South 33.20'
 - BC in Wood Post – Southwest 52.52'
 - (Corner is 1.5' South of Centerline Bituminous Paving)
- 2000 On November 2, Zieske Land Surveying, Inc. found a ¾" Iron Pipe, 2649.90 feet from the Northeast Corner of Section 23-102-43.
- 2002 On November 12, Bolton & Menk, Inc. found a ¾" Iron Pipe at surface.