

CERTIFICATE OF LOCATION OF GOVERNMENT CORNER

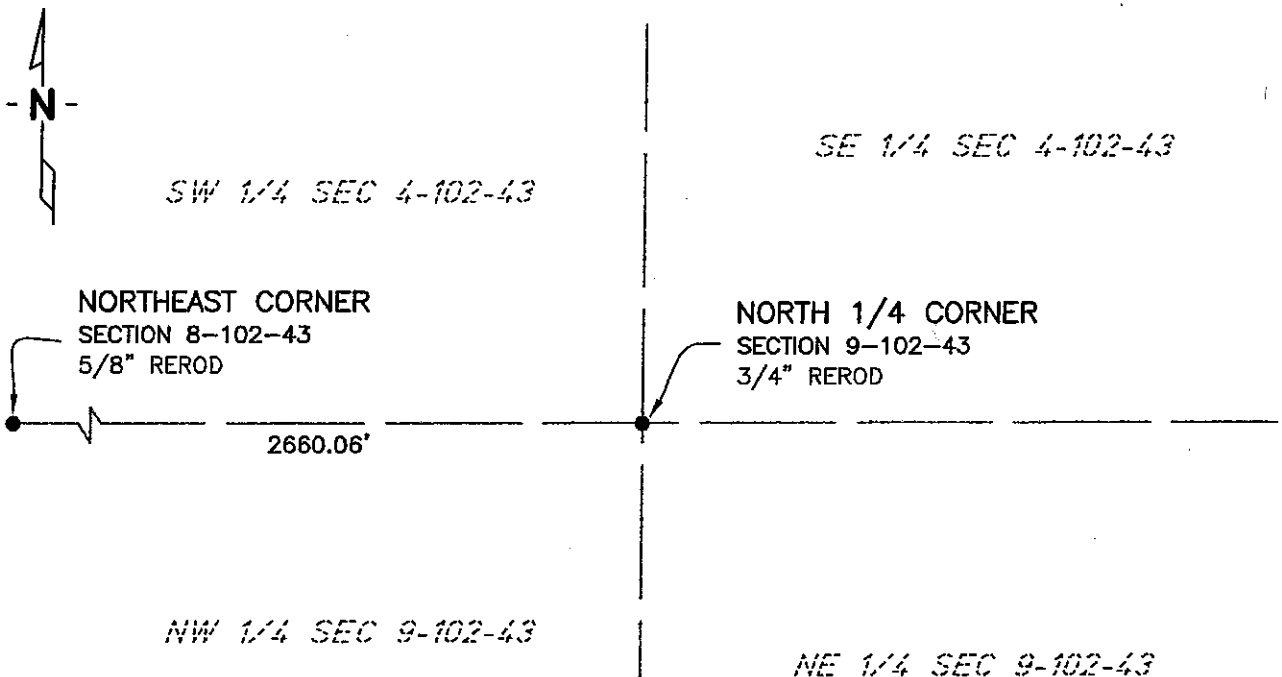
NORTH QUARTER Corner of Section 9, Township 102 N, Range 43 W, 5th P.M.
 STATE OF MINNESOTA, County of NOBLES

At the corner location shown on the sketch:

☒ On 11/13/02 found a 3/4" REROD
DATE

☒ left monument as found, ☐ lowered monument, ☐ removed monument (explain)

☐ On _____ placed a _____
DATE

SKETCH OF REFERENCE TIES

NAD83 (1996 ADJUSTMENT)
 STATE PLANE COORDINATES
 NOBLES COUNTY DATUM

N= 158245.132
 E= 485971.776

BOOK: NOBLES CO. PG. 26
 I:\NOBLES\CERTIFICATES\N9-102-43

Statement of evidence relative to this corner location is on back of page.

I hereby certify that this document and the data contained herein was prepared by me or under my direct supervision.

Janele Fowlds 10/4/05
JANELE FOWLDS DATE

Registration No. 26748

☒ Land surveyor, ☐ Professional Engineer

☐ County Surveyor, ☐ County Engineer

OFFICE OF THE COUNTY RECORDER

County of _____

I hereby certify that this document was filed in the Co. Recorders office at _____ M. on the _____ day of _____ A.D., 19____

County Recorder _____

By _____, Deputy

DOCUMENT NO. _____

Statement of Evidence

North Quarter Corner Section 9, Township 102 North, Range 43 West

According to the Original Survey notes located in the Secretary of States Office, the North Quarter of Section 9 was established as follows: East on a random line between Sections 4 & 9, Variance 11 degrees 44 minutes, at 40.00 chains set temporary quarter post, at 80.40 chains intersect North and South line at the corner to Sections 3, 4, 9, & 10. West between Sections 4 & 9, Variance 11 degrees 44 minutes, at 40.20 chains set post in mound with pits for the Quarter Section Corner.

2002 On November 13, Bolton & Menk, Inc. found a 5/8" Rerod 0.9' below the surface at the intersection of township roads.