

CERTIFICATE OF LOCATION OF GOVERNMENT CORNER

NORTHEAST Corner of Section 10, Township 102 N, Range 43 W, 5th P.M.
STATE OF MINNESOTA, County of NOBLES

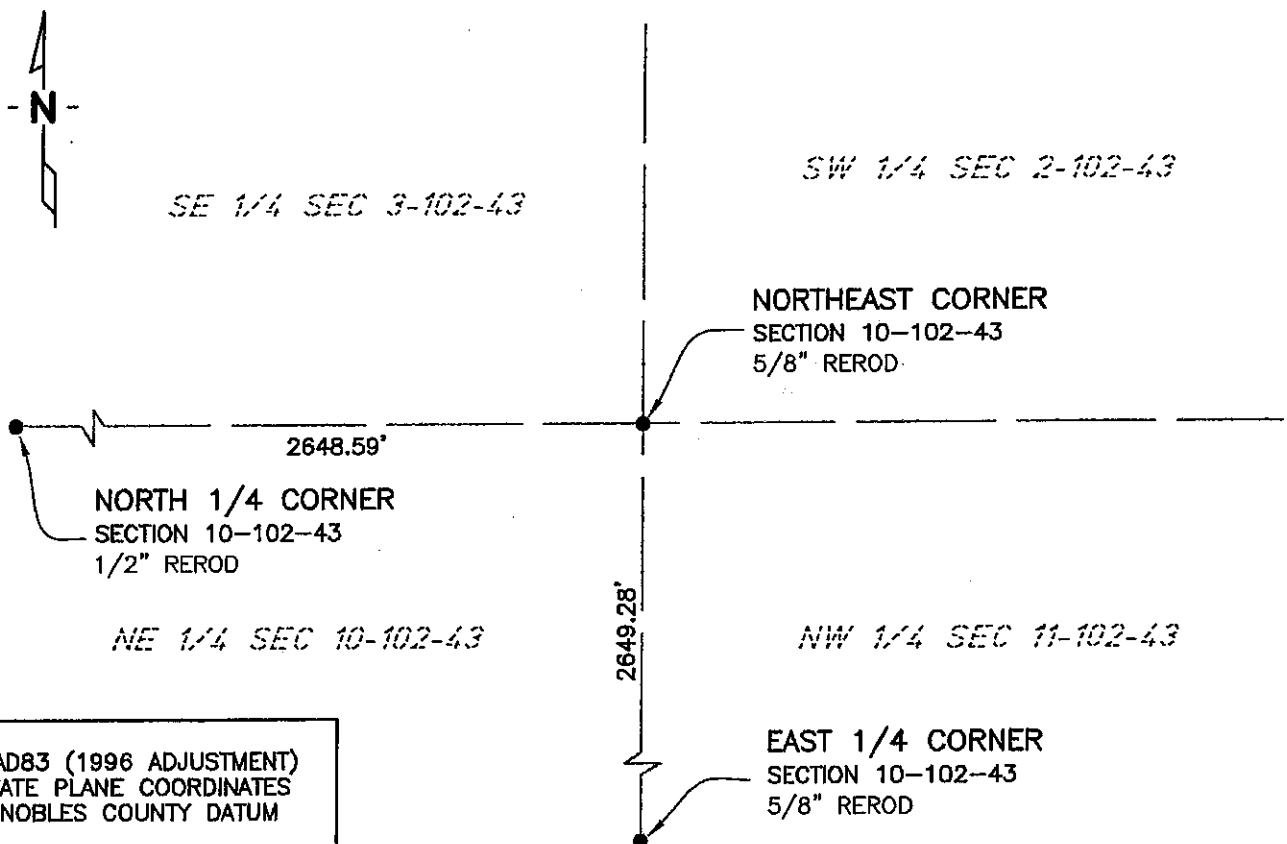
At the corner location shown on the sketch:

☒ On 11/13/02 found a 5/8" REROD
DATE

☒ left monument as found, ☐ lowered monument, ☐ removed monument (explain)

☐ On _____ placed a _____
DATE

SKETCH OF REFERENCE TIES



NAD83 (1996 ADJUSTMENT)
STATE PLANE COORDINATES
NOBLES COUNTY DATUM

N= 158238.229
E= 493923.577

BOOK: NOBLES CO. PG. 29
I:\NOBLES\CERTIFICATES\NE10-102-43

Statement of evidence relative to this corner location is on back of page.

I hereby certify that this document and the data contained herein was prepared by me or under my direct supervision.

Janele Fowlds
JANELE FOWLDS

10/4/05
DATE

Registration No. 26748

☒ Land surveyor, ☐ Professional Engineer

☐ County Surveyor, ☐ County Engineer

OFFICE OF THE COUNTY RECORDER

County of _____

I hereby certify that this document was filed in the Co. Recorders office at _____ M. on the _____ day of _____ A.D., 19____

County Recorder _____

By _____, Deputy

DOCUMENT NO. _____

Statement of Evidence

Northeast Corner Section 10, Township 102 North, Range 43 West

According to the Original Survey notes located in the Secretary of States Office, the Northeast Corner of Section 10 was established as follows: North between Sections 10 & 11, Variance 11 degrees 20 minutes, at 80.00 chains set a post in mound with pits for the corner to Sections 2, 3, 10, & 11.

- | | |
|------|--|
| 1892 | Nobles County Highway Department records show a stone monument was set. |
| 1920 | Nobles County Highway Department records show a stone monument. |
| 1937 | Nobles County Highway Department records show a stone monument. |
| 1967 | Nobles County Highway Department records show a stone monument, and that an iron pin was set. |
| 1981 | Nobles County Highway Department records show an iron pin. |
| 1983 | Nobles County Highway Department records show an iron pin was set after construction, with ties as follows:
Nail & B.C. in power pole – Northwest 45.15'
Bolt in yield sign – Southwest 46.00'
Bolt in yield sign – Northeast 46.28'
Telephone pedestal – Southwest 64.30' |
| 2002 | On November 13, Bolton & Menk, Inc. found a 5/8" Rerod down 1' at the intersection of a county road and a township road. |