

CERTIFICATE OF LOCATION OF GOVERNMENT CORNER

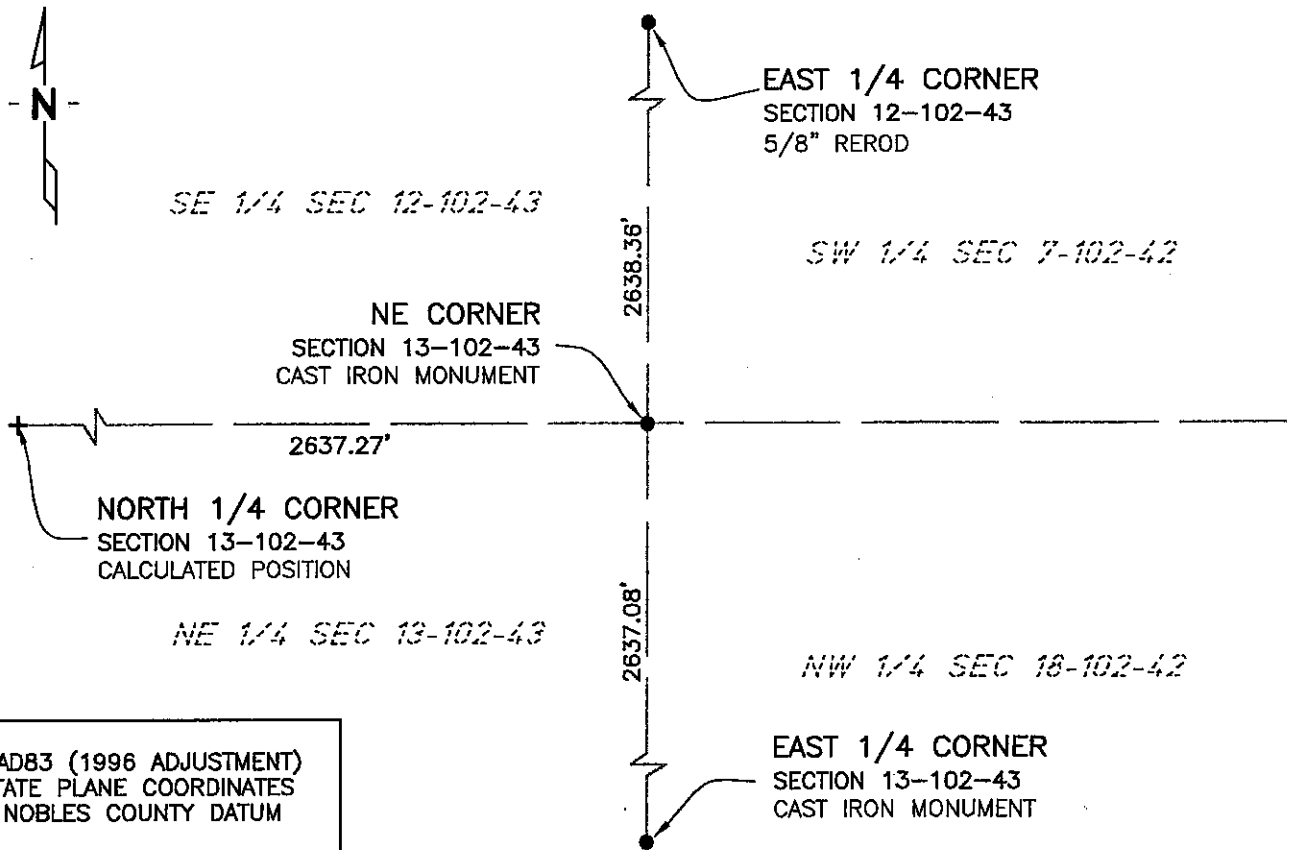
NORTHEAST Corner of Section 13, Township 102 N, Range 43 W, 5th P.M.

STATE OF MINNESOTA, County of NOBLES

At the corner location shown on the sketch:

- On 11/08/02 found a CAST IRON MONUMENT
DATE
- left monument as found, lowered monument, removed monument (explain)
- On _____ placed a _____
DATE

SKETCH OF REFERENCE TIES



NAD83 (1996 ADJUSTMENT)
STATE PLANE COORDINATES
NOBLES COUNTY DATUM

N= 152946.977
E= 504475.776

BOOK: NOBLES CO. PG. 33
I:\NOBLES\CERTIFICATES\NE13-102-43

Statement of evidence relative to this corner location is on back of page.

I hereby certify that this document and the data contained herein was prepared by me or under my direct supervision.

JANELE FOWLDS DATE

Registration No. 26748

- Land surveyor, Professional Engineer
- County Surveyor, County Engineer

OFFICE OF THE COUNTY RECORDER

County of _____

I hereby certify that this document was filed in the Co. Recorders office at ____M. on the _____ day of _____ A.D., 19____

County Recorder _____

By _____, Deputy

DOCUMENT NO. _____

Statement of Evidence

Northeast Corner Section 13, Township 102 North, Range 43 West

- 1991 On April 5, Allan E. Schoon filed a Certificate of Location that stated the following:
- July 1867 The original Public Land Survey was run in 1867 by Deputy Surveyor T. B. Walker, and his notes read, "cor. sec. 12, 13, 7, & 18 – post in mound, nearly level grass land. Soil 1st grade"
- 1891 and 1911 Nobles County highway records show a stone at the corner.
- July-Aug. 1918 W. A. Saxon, Nobles County Surveyor, at the request of the County Board, surveyed part of State Road Number 5 and notes there was an old stone at Cambells corner.
- 1959 Nobles County Highway records show an iron pin.
- March 21, 1974 S. Baker, Minnesota Highway Department Survey Crew Chief, found a ¾ inch iron stake flush with the bituminous surface 18 inches east of the Trunk Highway 91 centerline stripe. This is 84 feet north of a P.O.T. at the I-90 ramp terminus.
- Sept. 17, 1975 D. Almquist, Minnesota Department of Transportation Survey Crew Chief, found a ¾ inch iron stake flush with the road surface and 1 foot east of Trunk Highway 91 centerline stripe.
- Feb. 13, 1978 Minnesota Department of Transportation Survey crew members Foster, Verdoorn, and Warner found a ¾ inch iron pin as described above.
- Aug. 3, 1988 O. Berkness, Senior Highway Technician for the Minnesota Department of Transportation, found the ¾ inch iron pin flush with the bituminous surface, and placed a Minnesota Department of Transportation cast iron monument flush with the surface.
- The inplace location of the iron pin is compatible with the occupation lines within the section. An analysis of the Statement of Evidence and the field measurements indicates the iron pin is in a reasonable location.
- For addition information, including field measurements and photographs, contact the Minnesota Department of Transportation in Windom, Minnesota.
- 2002 On November 8, Bolton & Menk, Inc. found a Cast Iron Monument in the centerline of T.H. 91