

# CERTIFICATE OF LOCATION OF GOVERNMENT CORNER

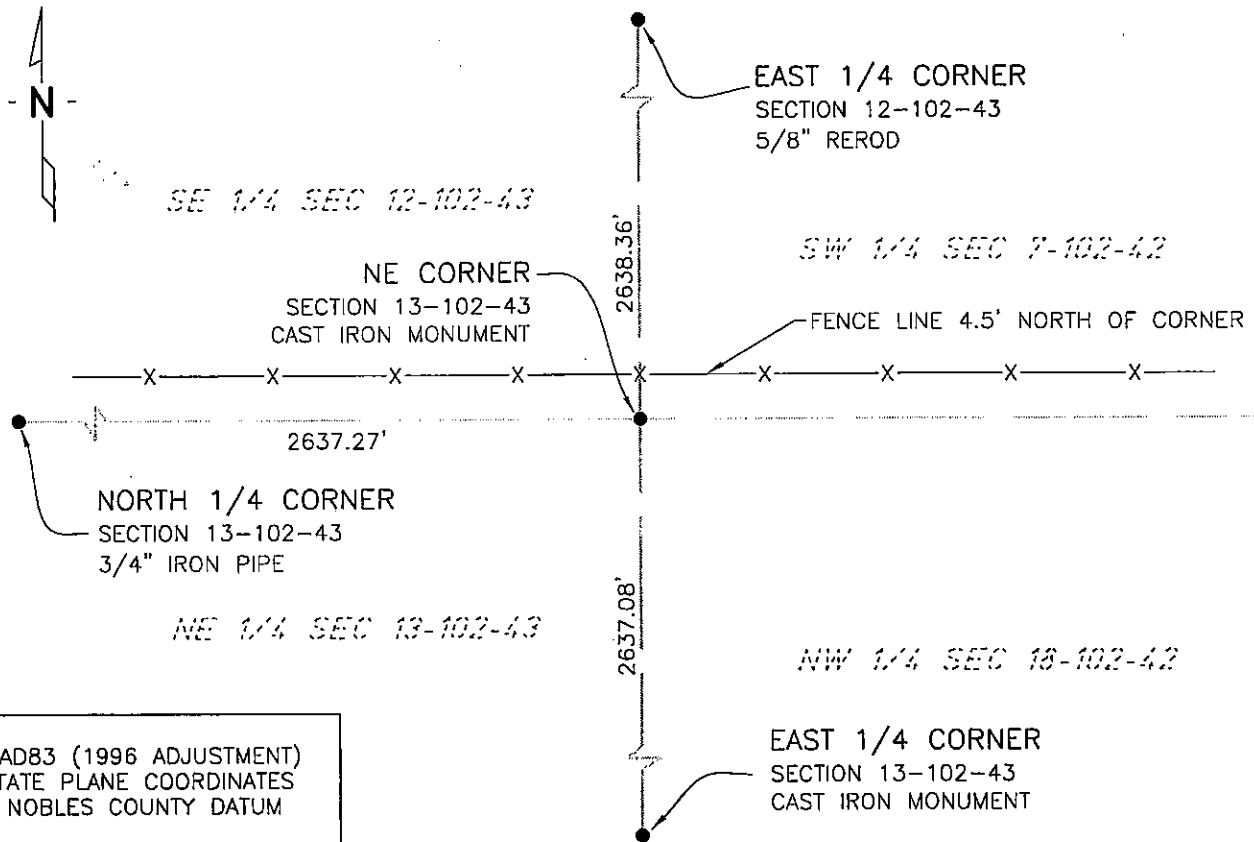
NORTHEAST Corner of Section 13, Township 102 N, Range 43 W, 5th P.M.

STATE OF MINNESOTA, County of NOBLES

At the corner location shown on the sketch:

- On 11/08/02 found a CAST IRON MONUMENT  
DATE
- left monument as found,  lowered monument,  removed monument (explain)
- On \_\_\_\_\_ placed a \_\_\_\_\_  
DATE

### SKETCH OF REFERENCE TIES



NAD83 (1996 ADJUSTMENT)  
STATE PLANE COORDINATES  
NOBLES COUNTY DATUM

N= 152946.977  
E= 504475.776

BOOK: NOBLES CO. PG. 33  
I:\NOBLES\CERTIFICATES\NE13-102-43

Statement of evidence relative to this corner location is on back of page.

I hereby certify that this document and the data contained herein was prepared by me or under my direct supervision.

Janele Fowlds      4-24-06  
JANELE FOWLDS      DATE

Registration No. 26748

- Land surveyor,     Professional Engineer
- County Surveyor,    County Engineer

OFFICE OF THE COUNTY RECORDER

County of \_\_\_\_\_

I hereby certify that this document was filed in the Co. Recorders office at \_\_\_\_\_ M. on the \_\_\_\_\_ day of \_\_\_\_\_ A.D., 19\_\_\_\_

County Recorder \_\_\_\_\_

By \_\_\_\_\_, Deputy

DOCUMENT NO. \_\_\_\_\_

Statement of Evidence

North Quarter Corner Section 13, Township 102 North, Range 43 West

According to the Original Survey notes located in the Secretary of States Office, the North Quarter of Section 13 was established as follows: East on a random line between Sections 12 & 13, Variance 11 degrees 30 minutes, at 40.00 chains set temporary quarter post, at 79.87 chains intersect Range Line 57 links South of the corner to Sections 7, 12, 13, & 18. South 89 degrees 36 minutes West, between Sections 12 & 13, Variance 11 degrees 30 minutes, at 39.935 chains set post in mound with pits for the Quarter Section Corner.

- 1891 Nobles County Highway Department records show an iron pin.
- 2000 On November 10, Zieske Land Surveying, Inc. shows the bearing of the South line of the SW  $\frac{1}{4}$  to be South 89 degrees 26 minutes 40 seconds, and the bearing of the North – South Quarter line to be South 00 degrees 21 minutes 16 seconds West. No distance between the South Quarter and the North Quarter was shown.
- 2002 On December 13, Bolton & Menk, Inc. searched the corner and found nothing. Bolton & Menk, Inc. calculated the position based on angular measurement between the South line of the SW  $\frac{1}{4}$  and the North-South Quarter line, from the survey done by Zieske Land Surveying, Inc. dated November 10, 2000 and on line between the Northeast and the Northwest Corners.
- 2006 On February 27, Bolton & Menk, Inc., Fairmont, placed a  $\frac{3}{4}$ " x 18" iron pipe monument at the previously calculated position.