

# CERTIFICATE OF LOCATION OF GOVERNMENT CORNER

NORTHEAST Corner of Section 13, Township 102 N, Range 44 W, 5th P.M.

STATE OF MINNESOTA, County of NOBLES

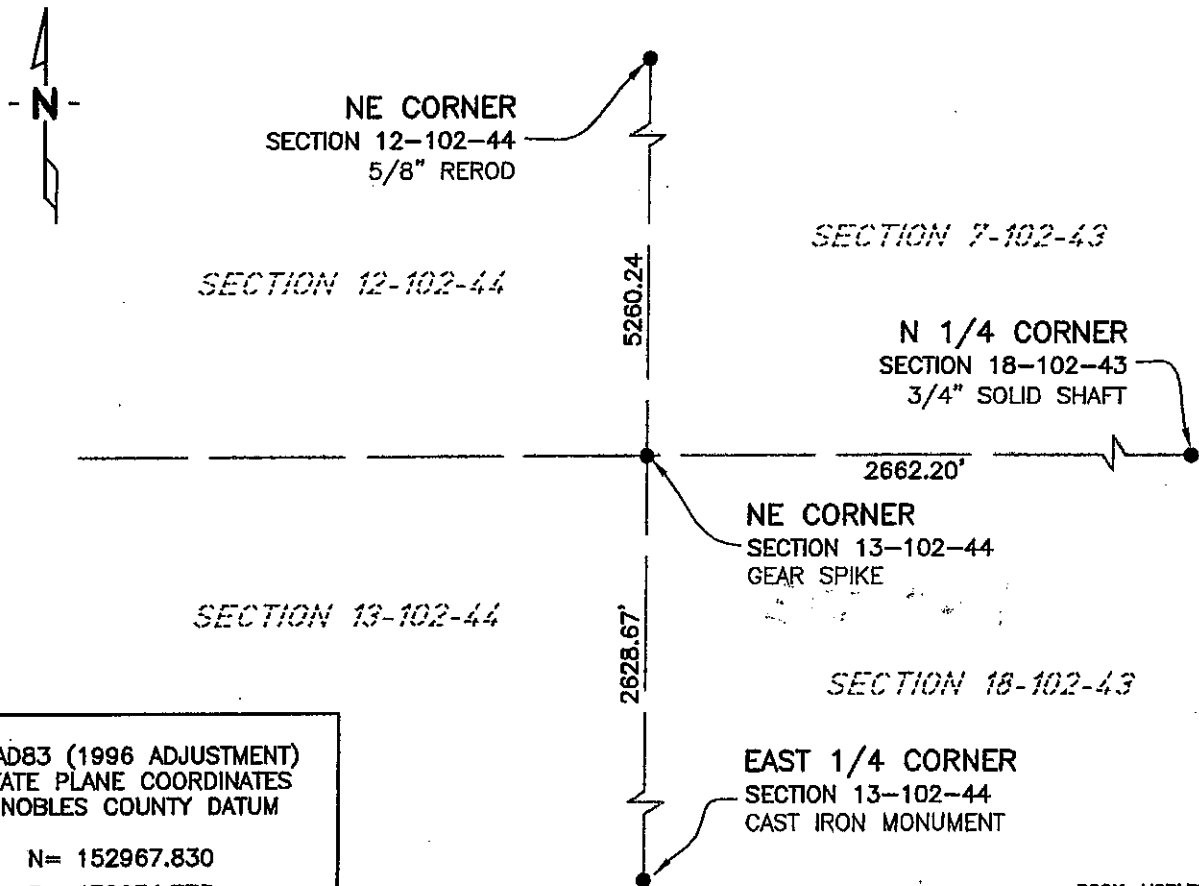
At the corner location shown on the sketch:

☒ On 11/08/02 found a GEAR SPIKE  
DATE

☒ left monument as found, ☐ lowered monument, ☐ removed monument (explain)

☐ On \_\_\_\_\_ placed a \_\_\_\_\_  
DATE

## SKETCH OF REFERENCE TIES



NAD83 (1996 ADJUSTMENT)  
STATE PLANE COORDINATES  
NOBLES COUNTY DATUM

N= 152967.830

E= 472634.775

BOOK: NOBLES CO. PG. 3

I:\NOBLES\CERTIFICATES\NE13-102-44

Statement of evidence relative to this corner location is on back of page.

I hereby certify that this document and the data contained herein was prepared by me or under my direct supervision.

Janele Fowlds  
JANELE FOWLDS

10/4/05  
DATE

Registration No. 26748

☒ Land surveyor, ☐ Professional Engineer

☐ County Surveyor, ☐ County Engineer

OFFICE OF THE COUNTY RECORDER

County of \_\_\_\_\_

I hereby certify that this document was filed in the Co. Recorders office at \_\_\_\_\_ M. on the \_\_\_\_\_ day of \_\_\_\_\_ A.D., 19\_\_\_\_

County Recorder \_\_\_\_\_

By \_\_\_\_\_, Deputy

DOCUMENT NO. \_\_\_\_\_

## Statement of Evidence

### Northeast Corner Section 13, Township 102 North, Range 44 West

According to the Original Survey notes located in the Secretary of States Office, the Northeast Corner of Section 13 was established as follows: North on the true line between Ranges 43 & 44, Township 102, between Sections 13 & 18, Variance 12 degrees, at 80.00 chains set a post in mound for the corner to Sections 7, 18, 12, & 13.

- 1917            Nobles County Highway Department records show an iron pin.
- 1930's          State of Minnesota Department of Highways, Right of Way Map, Nobles County, S.P. 5301 and S.P. 5302 shows the corner being 11.8' North of the centerline of T.H. 16.
- 1959            Nobles County Highway Department records show an iron pin.
- 1978            Nobles County Highway Department records show that an iron pin was placed, with ties as follows:  
                    Telephone Pole – Northwest 70.48'  
                    Telephone Pole – Northeast 85.15'  
                    "X" in wing wall – Southwest 62.12'  
                    "X" in wing wall – Southeast 61.81'  
                    11.85' North of T.H. 16
- 2002            On November 8, Bolton & Menk, Inc. found a Gear Spike flush with bituminous, 12' North of the centerline highway.

The evidence is not conclusive as to the true corner location, however the occupational and collateral evidence suggest that this is a reasonable location as to the corner. Additional information regarding the preparation of this certificate can be obtained by contacting: Bolton & Menk, Inc., Mankato, MN.