

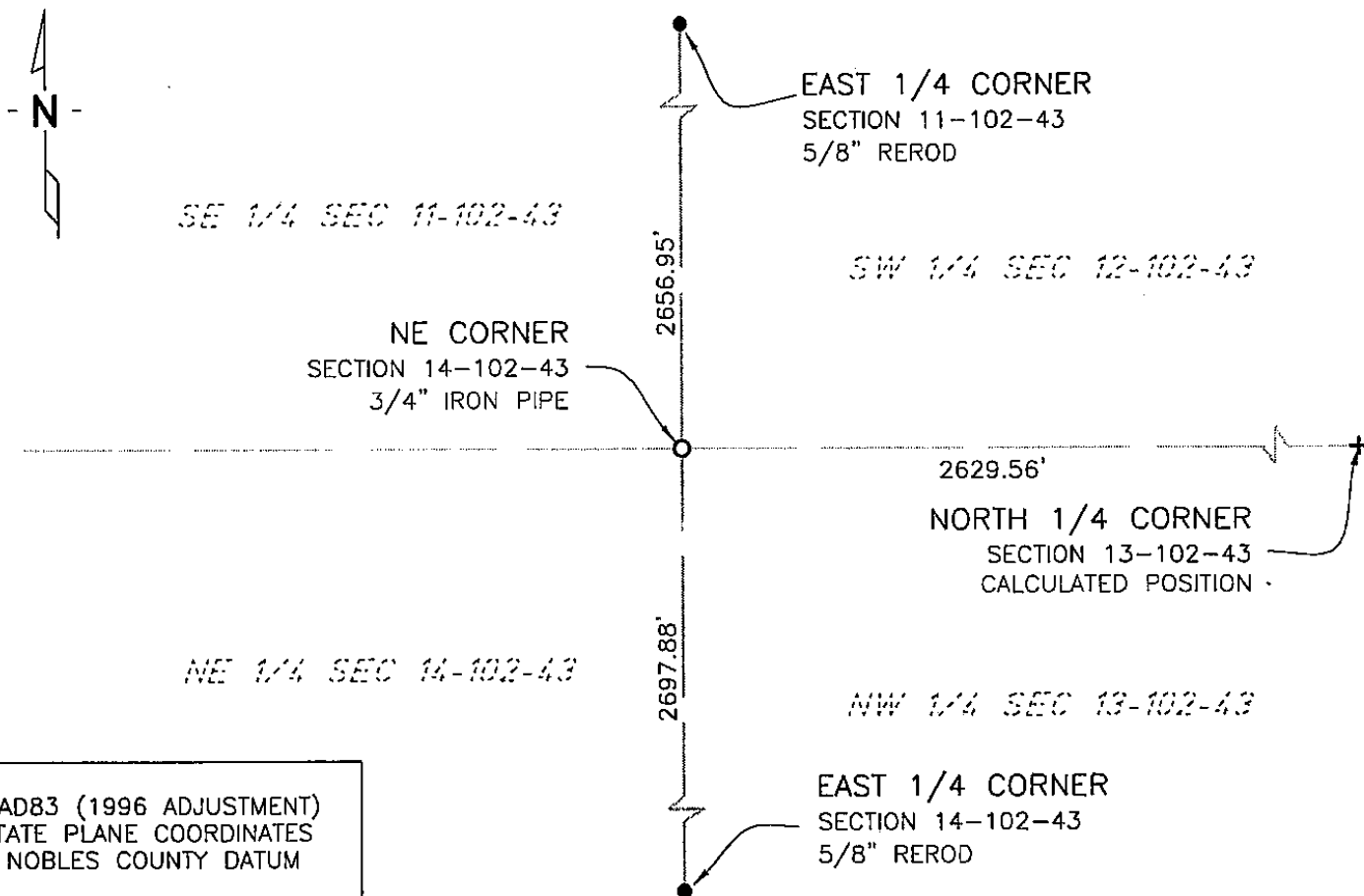
NORTHEAST

Corner of Section 14, Township 102 N, Range43 W, 5th P.M.STATE OF MINNESOTA, County of NOBLES

At the corner location shown on the sketch:

☐ On 11/12/02 found a NOTHING  
DATE☐ left monument as found, ☐ lowered monument, ☐ removed monument (explain)☒ On 6/16/05 placed a 3/4" X 24" IRON PIPE MARKED WITH REGISTRATION  
DATE  
#26748, 0.2' BELOW GRAVEL SHOULDER

## SKETCH OF REFERENCE TIES

NAD83 (1996 ADJUSTMENT)  
STATE PLANE COORDINATES  
NOBLES COUNTY DATUM

N= 152908.921

E= 499209.087

BOOK: NOBLES CO. PG.

I:\NOBLS\CERTIFICATES\NE14-102-

Statement of evidence relative to this corner location is on back of page.

I hereby certify that this document and the data contained herein was prepared by me or under my direct supervision.

  
JANELE FOWLDS4-24-06  
DATERegistration No. 26748☒ Land surveyor, ☐ Professional Engineer☐ County Surveyor, ☐ County Engineer

## OFFICE OF THE COUNTY RECORDER

County of \_\_\_\_\_

I hereby certify that this document was filed in the Co. Recorders office at \_\_\_\_\_ M. on the \_\_\_\_\_ day of \_\_\_\_\_ A.D., 19\_\_

County Recorder \_\_\_\_\_

By \_\_\_\_\_, Deputy

DOCUMENT NO. \_\_\_\_\_

### Statement of Evidence

#### Northeast Corner Section 14, Township 102 North, Range 43 West

According to the Original Survey notes located in the Secretary of States Office, the Northeast Corner of Section 14 was established as follows: North between Sections 13 & 14, Variance 10 degrees 45 minutes, at 80.00 chains set a post in mound with pits for the corner to Sections 11, 12, 13, & 14.

- 1891 Nobles County Highway Department records show an iron pin.
- 1897 Nobles County Highway Department records show an iron pin.
- 1930's State of Minnesota Department of Highways, Right of Way Map, Nobles County, S.P. 5301 and S.P. 5302 show the corner being 389.0' ahead of PI point and 112.0' South, at the intersection of a North-South Road and a fence running West.
- 2002 On November 12, Bolton & Menk, Inc. found Iron Pins located at the PI's of the highway, but did not find anything at the Section Corner. Bolton & Menk, Inc. calculated the position of the corner based on the State of Minnesota Department of Highways, Right of Way Map, Nobles County, S.P. 5301 and S.P. 5302 dated in the 1930's. The Calculated position agrees with the North – South road and a fence running West.
- 2005 On June 16, Bolton & Menk, Inc. set a ¾" x 20" iron pipe monument with registration #26748, 0.2' below the gravel surface of County Highway 35, at the previously calculated position.