

CERTIFICATE OF LOCATION OF GOVERNMENT CORNER

NORTHEAST Corner of Section 16, Township 102 N, Range 43 W, 5th P.M.

STATE OF MINNESOTA, County of NOBLES

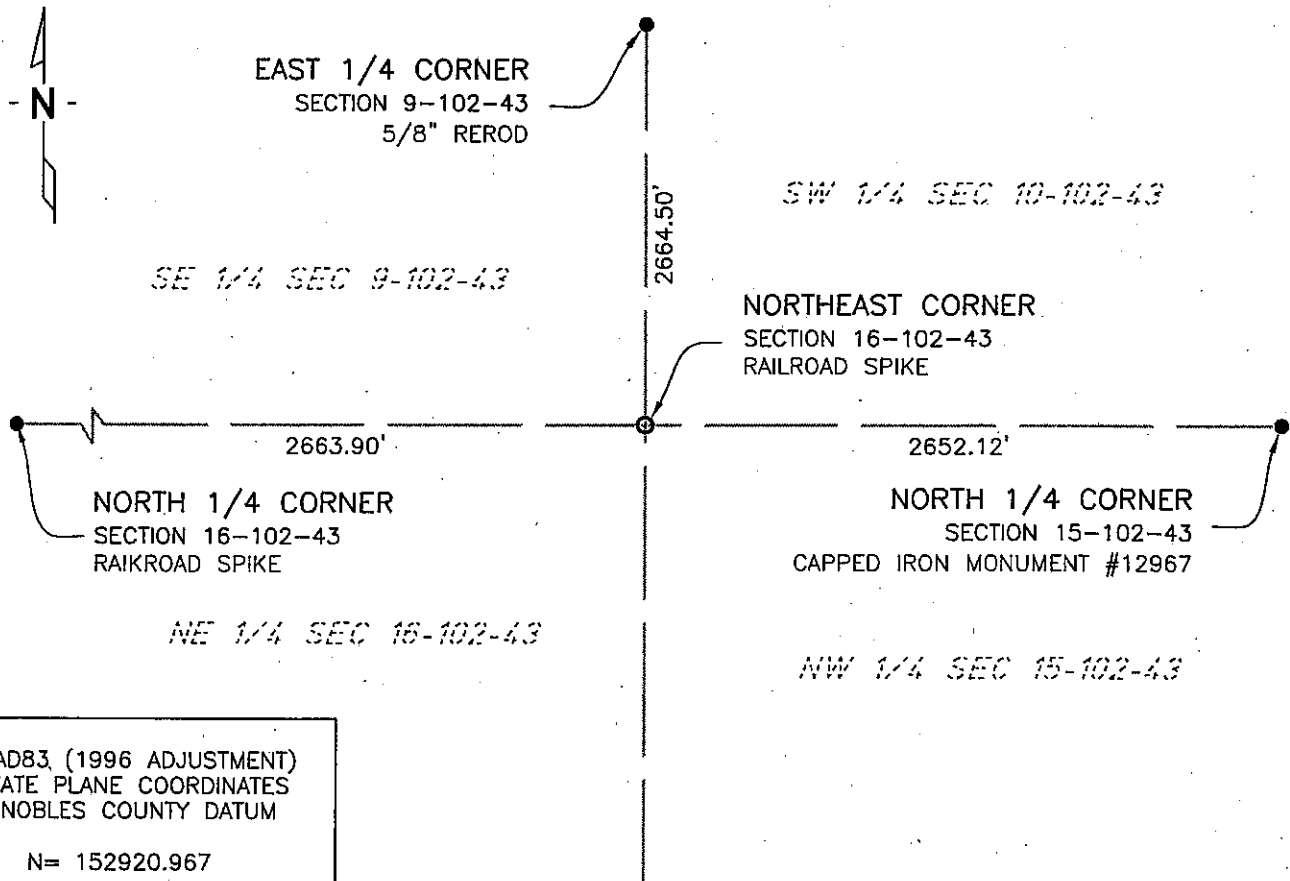
At the corner location shown on the sketch:

☒ On 11/12/02 found a BRASS PLUG
DATE

☐ On 6/16/05 placed a RAILROAD SPIKE
DATE

☒ left monument as found, ☐ lowered monument, ☐ removed monument (explain)

SKETCH OF REFERENCE TIES



NAD83, (1996 ADJUSTMENT)
STATE PLANE COORDINATES
NOBLES COUNTY DATUM

N= 152920.967

E= 488599.355

BOOK: NOBLES CO. PG. 19
I:\NOBLES\CERTIFICATES\NE16-102-43

Statement of evidence relative to this corner location is on back of page.

I hereby certify that this document and the data contained herein was prepared by me or under my direct supervision.

Janele Fowlds
JANELE FOWLDS

10/4/05
DATE

Registration No. 26748

☒ Land surveyor, ☐ Professional Engineer
☐ County Surveyor, ☐ County Engineer

OFFICE OF THE COUNTY RECORDER

County of _____

I hereby certify that this document was filed in the Co. Recorders office at ____M. on the _____ day of _____ A.D., 19____

County Recorder _____

By _____, Deputy

DOCUMENT NO. _____

Statement of Evidence

Northeast Corner Section 16, Township 102 North, Range 43 West

According to the Original Survey notes located in the Secretary of States Office, the Northeast Corner of Section 16 was established as follows: North between Sections 15 & 16, Variance 11 degrees 25 minutes, at 80.00 chains set a post in mound with pits for the corner to Sections 9, 10, 15, & 16.

- 1892 Nobles County Highway Department records show that a stone monument was set. No mention of how stone was set.
- 1930's State of Minnesota Department of Highways, Right of Way Map, Nobles County, S.P. 5301 and S.P. 5302 show the corner being 4.5' South of the centerline of T.H. 16 at the center of road right-of-way to the North.
- 1959 Nobles County Highway Department records show a brass plug.
- 1973 Nobles County Highway Department records show an iron pin with ties as follows:
Nail & Disc in corner fence post – Northwest 65.50'
Nail & Disc in power pole – Southeast 67.05'
Top of UGTCM – Southwest 54.50'
- 1981 Gary D. Martin found a brass plug 4.6' South of the centerline of T.H. 16.
- 2002 On November 12, Bolton & Menk, Inc. found a Brass Plug 0.4' below the surface, and 4.5 feet South of the centerline of Highway.
- 2005 On June 16, Bolton & Menk, Inc. set a Railroad spike, at the position of the previously found brass plug. The brass plug was destroyed due to the reconstruction of highway.