

# CERTIFICATE OF LOCATION OF GOVERNMENT CORNER

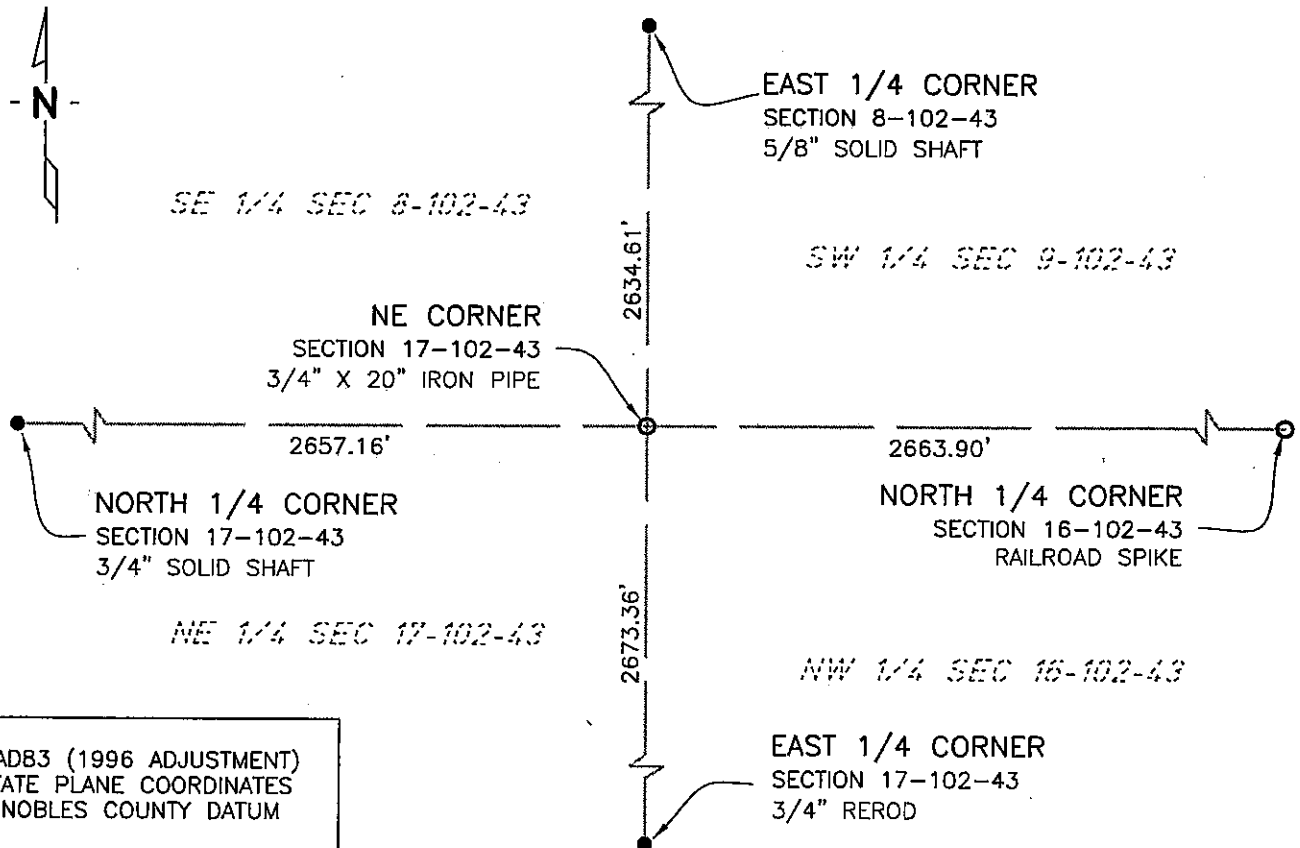
NORTHEAST Corner of Section 17, Township 102 N, Range 43 W, 5th P.M.  
STATE OF MINNESOTA, County of NOBLES

At the corner location shown on the sketch:

☒ On 11/08/02 found a 1/2" REROD  
DATE

☒ left monument as found, ☐ lowered monument, ☐ removed monument (explain)  
☒ On 6/16/05 placed a 3/4" X 20" IRON PIPE MARKED WITH REGISTRATION  
DATE  
#26748 0.05 BELOW BIT SURFACE

## SKETCH OF REFERENCE TIES



NAD83 (1996 ADJUSTMENT)  
STATE PLANE COORDINATES  
NOBLES COUNTY DATUM

N= 153018.497

E= 483272.445

BOOK: NOBLES CO. PG. 10  
I:\NOBLES\CERTIFICATES\NE17-102-43

Statement of evidence relative to this corner location is on back of page.

I hereby certify that this document and the data contained herein was prepared by me or under my direct supervision.

Janele Fowlds  
JANELE FOWLDS

10/4/05  
DATE

Registration No. 26748

☒ Land surveyor, ☐ Professional Engineer  
☐ County Surveyor, ☐ County Engineer

## OFFICE OF THE COUNTY RECORDER

County of \_\_\_\_\_

I hereby certify that this document was filed in the Co. Recorders office at \_\_\_\_M. on the \_\_\_\_\_ day of \_\_\_\_\_ A.D., 19\_\_

County Recorder \_\_\_\_\_

By \_\_\_\_\_, Deputy

DOCUMENT NO. \_\_\_\_\_

## Statement of Evidence

### Northeast Corner Section 17, Township 102 North, Range 43 West

According to the Original Survey notes located in the Secretary of States Office, the Northeast Corner of Section 17 was established as follows: North between Sections 16 & 17, Variance 11 degrees 50 minutes, at 80.00 chains set a post in mound with pits for the corner to Sections 8, 9, 16, & 17.

- |        |   |
|--------|---|
| 1930's | State of Minnesota Department of Highways, Right of Way Map, Nobles County, S.P. 5301 and S.P. 5302 show the corner being 25.5' North of the intersection of an East-West and North-South roads.  |
| 1959   | Nobles County Highway Department records show an iron pin   |
| 1973   | Nobles County Highway Department records show a brass plug in T.H. 16, and an iron pin.   |
| 1974   | Nobles County Highway Department records show an iron pin.  |
| 1992   | Nobles County Highway Department records show ties to the corner as follows:<br>Nail & Disc in power pole – Northwest 59.53'<br>Nail & Disc in power pole – Southwest 90.08'<br>Nail & Disc in power pole – Southeast 94.69'<br>No mention of what type of monument is at corner. |
| 2002   | On November 8, Bolton & Menk, Inc. found a ½" Rerod 0.1' below the surface, 25.0' North of the intersection on an East-West and North-South roads.  |
| 2005   | On June 16, Bolton & Menk, Inc. set a ¾" x 20" iron pipe monument, 0.05' below bituminous surface, in the previous location of the rerod. The rerod was destroyed due the reconstruction of the highway   |