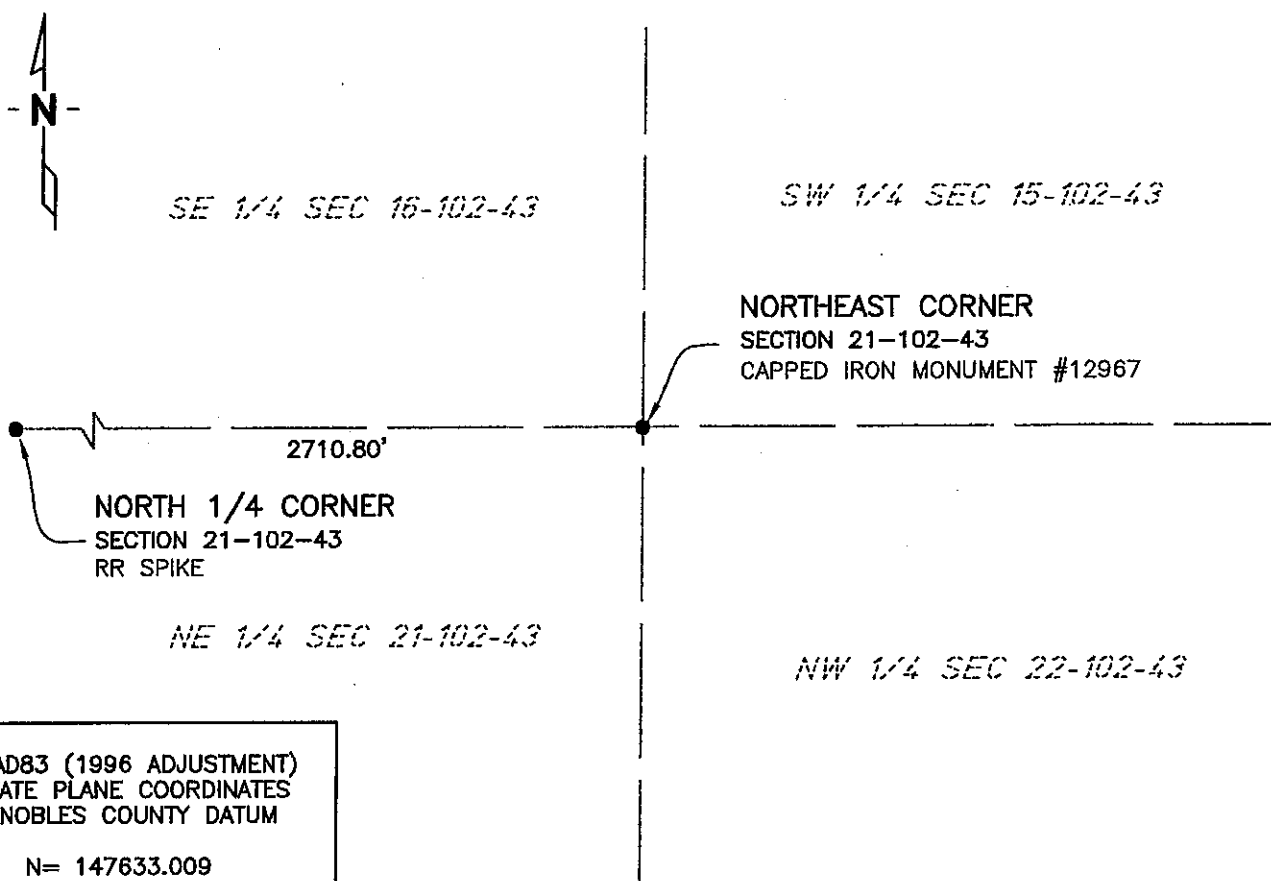


CERTIFICATE OF LOCATION OF GOVERNMENT CORNERNORTHEAST Corner of Section 21, Township 102 N, Range 43 W, 5th P.M.STATE OF MINNESOTA, County of NOBLES

At the corner location shown on the sketch:

- ☒ On 11/12/02 found a CAPPED IRON MONUMENT #12967
DATE
- ☒ left monument as found, ☐ lowered monument, ☐ removed monument (explain)
- ☐ On _____ placed a _____
DATE

SKETCH OF REFERENCE TIES



NAD83 (1996 ADJUSTMENT)
STATE PLANE COORDINATES
NOBLES COUNTY DATUM

N= 147633.009
E= 488559.460

BOOK: NOBLES CO. PG. 15
I:\NOBLES\CERTIFICATES\NE21-102-43

Statement of evidence relative to this corner location is on back of page.

I hereby certify that this document and the data contained herein was prepared by me or under my direct supervision.

Janele Fowlds 3-4-04
JANELE FOWLDS DATE

Registration No. 26748

- ☒ Land surveyor, ☐ Professional Engineer
☐ County Surveyor, ☐ County Engineer

OFFICE OF THE COUNTY RECORDER

County of _____

I hereby certify that this document was filed in the Co. Recorders office at _____ M. on the _____ day of _____ A.D., 19____

County Recorder _____

By _____, Deputy

DOCUMENT NO. _____

Statement of Evidence

Northeast Corner Section 21, Township 102 North, Range 43 West

According to the Original Survey notes located in the Secretary of States Office, the Northeast Corner of Section 21 was established as follows: North between Sections 21 & 22, Variance 11 degrees 45 minutes, at 80.00 chains set a post in mound with pits for the corner to Sections 15, 16, 21, & 22.

- 1941 Nobles County Highway Department records show a stake.
- 1959 Nobles County Highway Department records show an iron pin, with ties as follows:
Fence Post – Northwest 45.42'
Fence Post – Northeast 63.56'
Telephone Pedestal – Southeast 25.42'
Fence Post – Southwest 37.22'
- 1981 Gary D. Martin found a ½" rebar 1.4' below the surface, and set a Rebar with cap #12967 at surface.
- 2002 On November 12, Bolton & Menk, Inc. found a Capped Iron Monument #12967 0.2' below the surface.