

# CERTIFICATE OF LOCATION OF GOVERNMENT CORNER

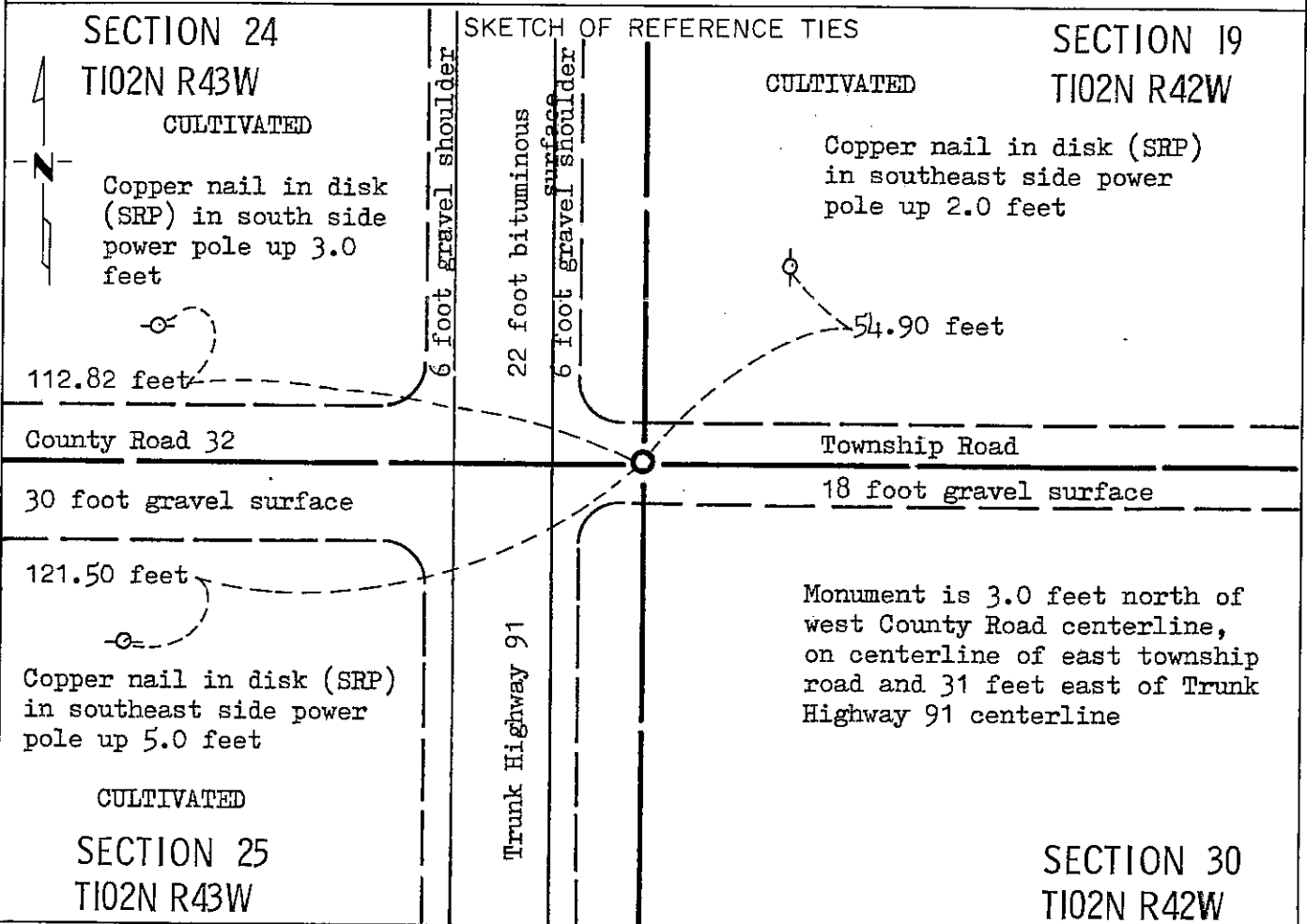
NORTHEAST Corner of Section 25, Township 102N, Range 43W, 5 P.M.

STATE OF MINNESOTA, County of NOBLES

At the corner location shown on the sketch:

- On July 1, 1988 found a 30 inch Minnesota Highway Department concrete monument  
DATE  
1.6 feet below the bituminous surface (See Statement of Evidence)  
 left monument as found,  lowered monument,  removed monument (explain)

On \_\_\_\_\_ placed a \_\_\_\_\_  
DATE



Statement of evidence relative to this corner location is on back of page.

I hereby certify that this document and the data contained herein was prepared by me or under my direct supervision.

Allan E. Schorn 4-5-91  
SIGNATURE DATE

Registration No. 11858

- Land Surveyor,  Professional Engineer
- County Surveyor,  County Engineer

OFFICE OF THE COUNTY RECORDER

County of \_\_\_\_\_

I hereby certify that this document was filed in the Co. Recorders office at 4:35 P. .M. on the 15th day of October A.D., 19 91

County Recorder James Howard

By \_\_\_\_\_, Deputy

DOCUMENT NO. 245765

Statement of Evidence: Northeast Corner of Section 25 T102N R43W 5th P.M.

- July 1867 The original Public Land Survey was run in 1867 by Deputy Surveyor Thomas B. Walker and his notes read: "Cor. Sec's. 19, 30, 24 & 25 for which post in mound etc.". High & nicely rolling soil 1st rate.
- Aug. 5, 1902 A plat signed by Nobles County Surveyor Milton S. Smith, indicates this corner is an iron.
- Sept. 25, 1917 A plat signed by William A. Saxon, Nobles County Surveyor, indicates a stone is at the corner.
- July 1, 1988 Minnesota Department of Transportation Survey crew chief, O. Berkness using a tractor mounted backhoe, found a 30 inch diameter Minnesota Highway Department Concrete Monument 1.6 feet below the bituminous surface, along with a  $\frac{1}{2}$  inch iron pipe placed by Registered Land Surveyor Gary Martin. After tying in both monuments, they continued to excavate down to the soil color change, and no other monuments were found. Both found monuments were replaced at their original position. The  $\frac{1}{2}$  inch iron pipe was 1.15 feet south of the 30 inch monument. The old Minnesota Highway Department Monument is accepted as the corner.
- For further information and photographs, contact the Minnesota Department of Transportation in Windom, Minnesota.

Tract *ML* Compared \_\_\_\_\_  
 Photo *ML* \_\_\_\_\_  
 Fee *ML* \_\_\_\_\_