

CERTIFICATE OF LOCATION OF GOVERNMENT CORNER

NORTHEAST Corner of Section 8, Township 102 N, Range 43 W, 5th P.M.
 STATE OF MINNESOTA, County of NOBLES

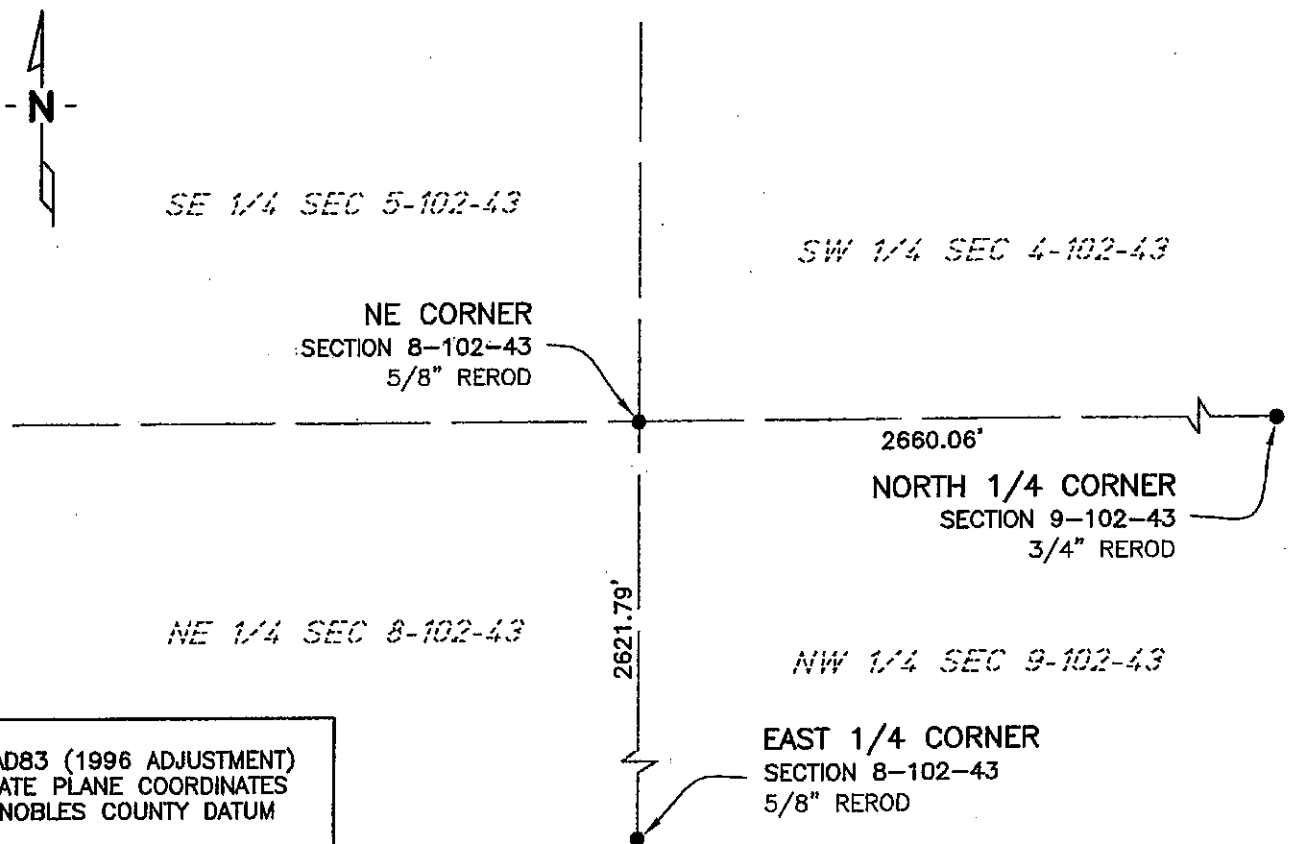
At the corner location shown on the sketch:

☒ On 11/12/02 found a 5/8" REROD
DATE

☒ left monument as found, ☐ lowered monument, ☐ removed monument (explain)

☐ On _____ placed a _____
DATE

SKETCH OF REFERENCE TIES



NAD83 (1996 ADJUSTMENT)
 STATE PLANE COORDINATES
 NOBLES COUNTY DATUM

N= 158274.747
 E= 483311.882

BOOK: NOBLES CO. PG. 17
 I:\NOBLES\CERTIFICATES\NEB-102-43

Statement of evidence relative to this corner location is on back of page.

I hereby certify that this document and the data contained herein was prepared by me or under my direct supervision.

Janele Fowlds
 JANELE FOWLDS

10/4/05
 DATE

Registration No. 26748

☒ Land surveyor, ☐ Professional Engineer

☐ County Surveyor, ☐ County Engineer

OFFICE OF THE COUNTY RECORDER

County of _____

I hereby certify that this document was filed in the Co. Recorders office at _____ M. on the _____ day of _____ A.D., 19____

County Recorder _____

By _____, Deputy

DOCUMENT NO. _____

Statement of Evidence

Northeast Corner Section 8, Township 102 North, Range 43 West

According to the Original Survey notes located in the Secretary of States Office, the Northeast Corner of Section 8 was established as follows: North between Sections 8 & 9, Variance 11 degrees 15 minutes, at 80.00 chains set a post in mound with pits for the corner to Sections 4, 5, 8, & 9.

- 1938 Nobles County Highway Department records show a stone monument.
- 1963 Nobles County Highway Department records show a stake.
- 1965 Nobles County Highway Department records show a stake, and that an iron pin was placed.
- 1966 Nobles County Highway Department records show an iron pin.
- 1974 Nobles County Highway Department records show an iron pin.
- 1994 Nobles County Highway Department records show a 5/8" X 4" Rebar was placed after overlay, with ties as follows:
 - Bottom bolt stop sign – Southwest 52.38'
 - Bottom bolt stop sign – Northeast 54.11'
- 2002 On November 12, Bolton & Menk, Inc. found a PK Nail at the surface of a bituminous road, and a 5/8" Rerod 0.2' below the surface of the road.