

CERTIFICATE OF LOCATION OF GOVERNMENT CORNER

NE CORNER OF SECTION 13 TOWNSHIP, 102 RANGE, 43 5TH P.M.

STATE OF MINNESOTA, COUNTY OF NOBLES COUNTY

AT THE CORNER LOCATION SHOWN ON THE SKETCH

☒ ON 09-21-05 FOUND A 3" MN MONUMENT CAP IN INTERSECTION OF 240TH AVENUE
AND HIGHWAY 91

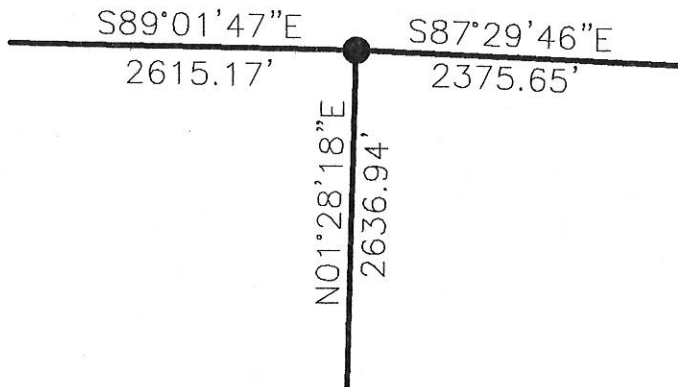
☒ LEFT MONUMENT AS FOUND ☐ LOWERED MONUMENT ☐ REMOVED MONUMENT (EXPLAIN)

☐ ON _____ PLACED A _____

SECTION CORNER COORDINATES

NORTHING 569354.869
EASTING 2112996.570

SKETCH OF REFERENCE



COORDINATES ARE NAD '83 US STATE PLANE MINNESOTA SOUTH

NGS BENCHMARK I.D. OP0642

NORTHING 568802.729

EASTING 2113000.747

NGS BENCHMARK I.D. OQ0109

NORTHING 567380.177

EASTING 2089063.587

STATEMENT OF EVIDENCE RELATIVE TO THIS CORNER LOCATION IS ON PAGE 2.

I HEREBY CERTIFY THAT THIS DOCUMENT AND THE DATA CONTAINED HEREIN WAS PREPARED BY ME OR UNDER MY DIRECT SUPERVISION.

Steven B. Kor
SIGNATURE

2/2/06
DATE

MN. LICENSE NO. 22461

☒ LAND SURVEYOR

☐ COUNTY SURVEYOR

☒ PROFESSIONAL ENGINEER

☐ COUNTY ENGINEER

OFFICE OF THE COUNTY RECORDER

I HEREBY CERTIFY THAT THIS DOCUMENT WAS FILED IN THE COUNTY RECORDERS OFFICE

AT _____ ON THE _____ DAY OF _____

COUNTY RECORDER _____

DEPUTY _____

DOCUMENT NO. _____

